

TÜV RHEINLAND ENERGY GMBH



Report on the performance test of the N300 ambient air quality measuring system manufactured by Teledyne API for the component carbon monoxide

TÜV Report: 936/21255654/B
Cologne, 25 January 2023

www.umwelt-tuv.de



tre-service@de.tuv.com

TÜV Rheinland Energy GmbH and its Ambient Air Quality department in particular
is accredited for the following activities:

- Determination of emissions and ambient air quality affected by air pollutants and odorous substances;
- Inspection of correct installation, functionality and calibration of continuous emission monitoring systems including systems for data evaluation and remote monitoring of emissions,
- Measurements in combustion chambers;
- Performance testing of measuring systems for continuous monitoring of emissions and air quality as well as electronic data evaluation and remote monitoring systems for emissions
- Determination of the stack height and air quality forecasts for hazardous and odorous substances;
- Determination of emissions and ambient air quality affected by noise and vibration, determination of sound power levels and noise measurements at wind turbines;

according to EN ISO/IEC 17025.

The accreditation has the DAkkS registration number: D-PL-11120-02-00
and covers the scope defined in the appendix to the certificate.

Reproduction of extracts from this test report is subject to prior written consent.

TÜV Rheinland Energy GmbH
D - 51105 Cologne, Am Grauen Stein,
Tel: + 49 (0) 221 806-5200, fax: 0221 806-1349

Report on the performance test of the N300 ambient air quality measuring system manufactured by Teledyne API for the component carbon monoxide, Report no.: 936/21255654/B

Blank page



Report on the performance test of the N300 ambient air quality measuring system manufactured by Teledyne API for the component carbon monoxide

| | | | |
|-------------------------|--|-----|-------|
| AMS designation: | N300 | | |
| Manufacturer: | Teledyne API 9970 Carrol Canyon Road San Diego, California, 92131 USA | | |
| Test period: | March 2022 to August 2022 | | |
| Date of report: | 25 January 2023 | | |
| Report Number: | 936/21255654/B | | |
| Editor: | Dipl.-Ing. Martin Schneider Phone: +49 221 806-1614 martin.schneider@de.tuv.com | | |
| Scope of report: | Report: | 125 | Pages |
| | Manual from page | 125 | |
| | Manual with | 134 | Pages |
| | Total | 259 | Pages |

Report on the performance test of the N300 ambient air quality measuring system manufactured by Teledyne API for the component carbon monoxide, Report no.: 936/21255654/B

Blank page

Table of contents

| | |
|---|----|
| 1. SUMMARY AND CERTIFICATION PROPOSAL..... | 11 |
| 1.1 Summary Overview | 11 |
| 1.2 Certification proposal..... | 13 |
| 1.3 Summary report on test results..... | 15 |
| 2. TASK DEFINITION..... | 21 |
| 2.1 Nature of the test..... | 21 |
| 2.2 Objectives..... | 21 |
| 3. DESCRIPTION OF THE AMS TESTED | 22 |
| 3.1 Measuring principle | 22 |
| 3.2 AMS scope and set-up | 24 |
| 3.3 AMS adjustment | 26 |
| 3.4 Alternative assemblies..... | 27 |
| 4. TEST PROGRAMME | 30 |
| 4.1 General remarks..... | 30 |
| 4.2 Laboratory test | 31 |
| 4.3 Field test..... | 31 |
| 5. REFERENCE MEASUREMENT METHOD | 34 |
| 5.1 Method of measurement..... | 34 |
| 6. TEST RESULTS IN ACCORDANCE WITH VDI 4202, PART 1 (2018)..... | 35 |
| 6.1 7.3 General requirements | 35 |
| 6.1 7.3.1 Measured value display | 35 |
| 6.1 7.3.2 Calibration inlet | 36 |
| 6.1 7.3.3 Easy maintenance | 37 |
| 6.1 7.3.4 Functional check..... | 38 |

| | | |
|-----|--|----|
| 6.1 | 7.3.5 Set-up times and warm-up times..... | 39 |
| 6.1 | 7.3.6 Instrument design | 40 |
| 6.1 | 7.3.7 Unintended adjustment | 41 |
| 6.1 | 7.3.8 Data output | 42 |
| 6.1 | 7.3.9 Digital interface | 43 |
| 6.1 | 7.3.10 Data transmission protocol..... | 44 |
| 6.1 | 7.3.11 Measuring range | 45 |
| 6.1 | 7.3.12 Negative output signals..... | 46 |
| 6.1 | 7.3.13 Failure in the mains voltage | 47 |
| 6.1 | 7.3.14 Operating states..... | 48 |
| 6.1 | 7.3.15 Switch-over | 49 |
| 6.1 | 7.3.16 Instrument software..... | 50 |
| 6.1 | 7.4 Requirements on performance characteristics for testing in the laboratory..... | 51 |
| 6.1 | 7.4.1 General requirements | 51 |
| 6.1 | 7.4.2 Test requirements | 52 |
| 6.1 | 7.4.3 Response time and memory effect..... | 54 |
| 6.1 | 7.4.4 Short-term drift..... | 55 |
| 6.1 | 7.4.5 Repeatability standard deviation | 56 |
| 6.1 | 7.4.6 Linearity | 57 |
| 6.1 | 7.4.7 Sensitivity coefficient of sample gas pressure | 58 |
| 6.1 | 7.4.8 Sensitivity coefficient of sample gas temperature..... | 59 |
| 6.1 | 7.4.9 Sensitivity coefficient of surrounding temperature | 60 |
| 6.1 | 7.4.10 Sensitivity coefficient of electrical voltage..... | 61 |
| 6.1 | 7.4.11 Cross-sensitivity..... | 62 |
| 6.1 | 7.4.12 Averaging effect..... | 63 |
| 6.1 | 7.4.13 Difference between sample and calibration port..... | 64 |

| | | |
|-----|---|-----|
| 6.1 | 7.4.14 Converter efficiency | 65 |
| 6.1 | 7.4.15 Residence time in the analyser | 66 |
| 6.1 | 7.5 Requirements on performance characteristics for testing in the field..... | 67 |
| 6.1 | 7.5.1 General requirements | 67 |
| 6.1 | 7.5.2 Location for the field test | 68 |
| 6.1 | 7.5.3 Test requirements | 69 |
| 6.1 | 7.5.4 Long-term drift..... | 70 |
| 6.1 | 7.5.5 Reproducibility standard deviation under field conditions | 71 |
| 6.1 | 7.5.6 Inspection interval | 72 |
| 6.1 | 7.5.7 Availability..... | 73 |
| 6.1 | 7.5.8 Converter efficiency | 74 |
| 6.1 | 7.6 Type approval and calculation of the measurement uncertainty | 75 |
| 7. | TEST RESULTS IN ACCORDANCE WITH STANDARD EN 14626 (2012)..... | 76 |
| 7.1 | 8.4.3 Response time | 76 |
| 7.1 | 8.4.4 Short-term drift..... | 80 |
| 7.1 | 8.4.5 Repeatability standard deviation | 84 |
| 7.1 | 8.4.6 Lack of fit of linearity of the calibration function | 87 |
| 7.1 | 8.4.7 Sensitivity coefficient of sample gas pressure | 92 |
| 7.1 | 8.4.8 Sensitivity coefficient of sample gas temperature..... | 94 |
| 7.1 | 8.4.9 Sensitivity coefficient of surrounding temperature | 96 |
| 7.1 | 8.4.10 Sensitivity coefficient of electrical voltage..... | 99 |
| 7.1 | 8.4.11 Interferents..... | 101 |
| 7.1 | 8.4.12 Averaging test..... | 104 |
| 7.1 | 8.4.13 Difference sample/calibration port..... | 107 |
| 7.1 | 8.5.4 Long-term drift..... | 109 |
| 7.1 | 8.5.5 Reproducibility standard deviation for CO under field conditions..... | 112 |

| | | |
|-----|---|-----|
| 7.1 | 8.5.6 Inspection interval | 115 |
| 7.1 | 8.5.7 Period of availability of the analyser | 116 |
| 7.1 | 8.6 Calculation of the total uncertainty in accordance with standard EN 14626 (2012) 118 | |
| 8. | RECOMMENDATIONS FOR USE IN PRACTICE | 123 |
| 9. | BIBLIOGRAPHY..... | 124 |
| 10. | ANNEX..... | 125 |

List of tables

| | | |
|-----------|--|-----|
| Table 1: | Measuring ranges tested | 11 |
| Table 2: | Technical data N300 (manufacturer's data)..... | 26 |
| Table 3: | Certification ranges VDI 4202-1 and EN 14626..... | 45 |
| Table 4: | Response times of the two N300 measuring systems for carbon monoxide..... | 78 |
| Table 5: | Individual results of the response time for carbon monoxide | 79 |
| Table 6: | Results for the short-term drift..... | 81 |
| Table 7: | Individual results for short-term drift 1st test gas | 82 |
| Table 8: | Individual results for short-term drift 2nd test gas..... | 83 |
| Table 9: | Repeatability standard deviation at zero and span point | 85 |
| Table 10: | Individual results for repeatability standard deviation..... | 86 |
| Table 11: | Analytical function variations for carbon monoxide | 88 |
| Table 12: | Individual results of the lack-of-fit test..... | 91 |
| Table 13: | Sensitivity coefficient of sample gas pressure | 93 |
| Table 14: | Individual results of the sensitivity to changes in sample gas pressure..... | 93 |
| Table 15: | Sensitivity coefficient of the sample gas temperature | 95 |
| Table 16: | Individual results of the influence of the sample gas temperature..... | 95 |
| Table 17: | Sensitivity coefficient of surrounding temperature | 97 |
| Table 18: | Individual results of the sensitivity coefficient of surrounding temperature | 98 |
| Table 19: | Sensitivity coefficient of electrical voltage..... | 100 |
| Table 20: | Individual results of the sensitivity coefficient of electrical voltage | 100 |
| Table 21: | Interferents in accordance with EN 14626 | 102 |
| Table 22: | Influence of the tested interferents ($c_t = 8.6 \mu\text{mol/mol}$) | 102 |
| Table 23: | Individual values from the interfering substances test..... | 103 |
| Table 24: | Results of the averaging test..... | 105 |
| Table 25: | Results of the averaging test..... | 106 |
| Table 26: | Results of determining the difference between sample/calibration inlet | 107 |
| Table 27: | Individual results for testing the difference between sample and calibration port 108 | |
| Table 28: | Results for the long-term drift at zero | 110 |
| Table 29: | Results for the long-term drift at span..... | 110 |
| Table 30: | Individual results for the drift tests | 111 |
| Table 31: | Reproducibility standard deviation, all data (8h mean values) from the field test 113 | |
| Table 32: | Availability of the N300 measuring system | 117 |
| Table 33: | Relevant performance characteristics and criteria according to EN 14626 | 119 |
| Table 34: | Expanded uncertainty. Laboratory test for system 1 | 121 |
| Table 35: | Expanded uncertainty. Laboratory and field tests for system 1 | 121 |
| Table 36: | Expanded uncertainty. Laboratory test for system 2 | 122 |
| Table 37: | Expanded uncertainty. Laboratory and field tests for system 2 | 122 |
| Table 38: | Weather data (daily averages), May 2022 | 128 |
| Table 39: | Weather data (daily averages), June 2022 | 129 |
| Table 40: | Weather data (daily averages), July 2022 | 130 |
| Table 41: | Weather data (daily averages), August 2022..... | 131 |
| Table 42: | Sensitivity coefficient of the sample gas pressure with the alternative pump . | 132 |
| Table 43: | Individual results of the sensitivity to changes in sample gas pressure with the alternative pump | 132 |
| Table 44: | Data from the test gas application with alternative particle filter..... | 133 |

List of figures

| | |
|---|-----|
| Figure 1: N300 Analysers | 22 |
| Figure 2: Flow schematic..... | 23 |
| Figure 3: Flow schematic..... | 24 |
| Figure 4: N300 Interior view - top view..... | 25 |
| Figure 5: DFU filter (left) and 47 mm round filter (right)..... | 27 |
| Figure 6: Regulated pump (left) and non-regulated pump (right)..... | 28 |
| Figure 7: Flow diagram N300..... | 29 |
| Figure 8: Software version for the N300 test instruments..... | 30 |
| Figure 9: Measuring station for conducting the field test | 32 |
| Figure 10: N300 in the measuring station during the field test..... | 33 |
| Figure 11: N300 with measured value display | 35 |
| Figure 12: Diagram illustrating the response time..... | 77 |
| Figure 13: Lack of fit results obtained from the group averages for system 1 | 89 |
| Figure 14: Lack of fit results obtained from the group averages for system 2 | 89 |
| Figure 15: Test of the averaging effect ($t_{CO} = t_{zero} = 45$ s.) | 105 |
| Figure 16: Reproducibility standard deviation under field conditions..... | 114 |
| Figure 17: Certificate of accreditation according to EN ISO/IEC 17025:2018 - page 1 ... | 126 |

1. Summary and certification proposal

1.1 Summary Overview

On behalf of Teledyne API, TÜV Rheinland Energy GmbH carried out the performance testing for the N300 ambient air measuring system for the component carbon monoxide. Testing was carried out in compliance with the following norms / standards and requirements:

- VDI Guideline 4202 Part 1: Performance test, declaration of suitability, and certification of point-related measuring systems for gaseous air pollutants, April 2018
- EN 14626: Ambient air - Standard method for the measurement of the concentration of carbon monoxide by non-dispersive infrared spectroscopy, December 2012

The N300 measuring system measures the CO component by means of non-dispersive infrared spectroscopy. This measuring principle conforms to the EU reference method. The tests were performed in a laboratory and in a three-month field test in Cologne. The following measuring ranges were tested:

Table 1: Measuring ranges tested

| Measured component | Measured range in [mg/m ³] ¹⁾ | Measured range in [ppm] or [μmol/mol] |
|--------------------|--|---------------------------------------|
| Carbon monoxide | 0 – 100 | 0 – 86 |

¹⁾ The specifications refer to 20 °C and 101.3 kPa

The minimum requirements were satisfied during the performance test.

TÜV Rheinland Energy GmbH therefore recommends the instrument's approval as a performance-tested measuring system for continuous monitoring of air quality affected by carbon monoxide.

Blank page

1.2 Certification proposal

Based on the positive results obtained, the following recommendation on the announcement of the AMS as a certified system is put forward:

AMS designation:

N300 for carbon monoxide

Manufacturer:

Teledyne API, San Diego, USA

Field of application:

For the continuous measurement of ambient air concentrations of carbon monoxide in stationary use.

Measuring ranges during performance testing:

| Component | Certification range | Unit |
|-----------------|---------------------|-------------------|
| Carbon monoxide | 0–100 | mg/m ³ |

Software version:

Rev. 1.9.0

Restrictions:

None

Note:

1. This report on the performance test is available online at www.gal1.de.
2. The AMS is approved for an ambient temperature range of 0 - 45 °C.
3. The N300 measuring system can be equipped with a controlled pump (PID controlled), as well as with a non-regulated pump (HD Non-PID).
4. The N300 measuring system can be equipped with a standard Teflon particle filter with a pore size of 5 µm and a diameter of 47 mm as well as with a DFU filter cartridge with a pore size of 0.01 µm.

Test Report:

TÜV Rheinland Energy GmbH, Cologne

Report no.: 936/21255654/B dated 25 January 2023

Blank page

1.3 Summary report on test results

| Performance criterion | Requirement | Test result | Satisfied | Page |
|--------------------------------------|--|--|----------------|------|
| 7 Performance criteria | | | | |
| 7.3 General requirements | | | | |
| 7.3.1 Measured value display | The measuring system shall have an operative measured value display as part of the instrument. | The measuring system has an operative measured value display at the front of the instrument. | yes | 35 |
| 7.3.2 Calibration inlet | The measuring system may have a test gas inlet separate from the sample gas inlet. | The measuring system has a test gas inlet separate from the sample gas inlet at the instrument back. | yes | 36 |
| 7.3.3 Easy maintenance | It should be possible to perform the necessary maintenance works on the AMS without major overheads, preferably from outside. | Maintenance work can be carried out externally with standard tools and reasonable effort. | yes | 37 |
| 7.3.4 Functional check | Special instruments for this purpose are to be considered as belonging to the equipment, to be used in the corresponding sub-tests and to be evaluated. | The tested measuring system does not have internal devices for operating the functional check. | not applicable | 38 |
| 7.3.5 Set-up times and warm-up times | The instruction manual shall include specifications in this regard. | Set-up times and warm-up times have been determined. | yes | 39 |
| 7.3.6 Instrument design | The instruction manual shall include specifications in this regard. | Specifications made in the instruction manual concerning instrument design are complete and correct. | yes | 40 |
| 7.3.7 Unintended adjustment | Shall secure measuring system against that. | The measuring system is secured against unintended and unauthorised adjustment of instrument parameters by way of a password. | yes | 41 |
| 7.3.8 Data output | The output signals shall be provided digitally and/or as analogue signals. | Measured signals are provided as analogue (0–20 mA, 4–20 mA or 0–1 V, 0–10 V) and digital signals (via TCP/IP, RS 232, USB). | yes | 42 |
| 7.3.9 Digital interface | The digital interface shall allow the transmission of output signals, status signals, and others. Access to the measuring system shall be secured against unauthorised use. | The digital measured value transmission functions correctly and is protected against unauthorised access by password protection. | yes | 43 |

| Performance criterion | Requirement | Test result | Satisfied | Page |
|-------------------------------------|---|---|-----------|------|
| 7.3.10 Data transmission protocol | Shall meet the requirements stipulated in Table 1 of VDI Guideline 4202 Part 1. | The measuring system has a Modbus Bavaria/Hesse transmission protocol installed as standard. Measured and status signals are transmitted correctly. The configuration is listed in the manual in Appendix A.2 from page 146. | yes | 44 |
| 7.3.11 Measuring range | The upper limit of measurement shall be greater or equal to the upper limit of the certification range. | A measuring range of 0 – 86 ppm (100 mg/m ³) for carbon monoxide is set as standard. Supplementary measuring ranges up to 0 – 1,000 ppm are possible. The measuring system's upper limit of measurement exceeds the upper limit of the certification range in each case. | yes | 45 |
| 7.3.12 Negative output signals | Shall not be suppressed (live zero). | The measuring system also provides negative output signals. | yes | 46 |
| 7.3.13 Failure in the mains voltage | Uncontrolled emission of operation and calibration gas shall be avoided; instrument parameters shall be secured by buffering against loss; when mains voltage returns, the instrument shall automatically reach the operation mode and start the measurement. | On return of mains voltage, the instrument returns to normal operating mode and automatically resumes measuring. | yes | 47 |
| 7.3.14 Operating states | Must be able to be monitored by status signals that can be transmitted telemetrically. | The measuring system provides various ports to ensure comprehensive monitoring and control via an external computer. | yes | 48 |
| 7.3.15 Switch-over | Switch-over between measurement and functional check and/or calibration shall be possible telemetrically. | As a rule, all necessary work for functional checks can be monitored and controlled directly on the instrument or by telemetric remote control. | yes | 49 |
| 7.3.16 Instrument software | Shall be displayed when switched on. Changes affecting instrument functions shall be communicated to the test laboratory. | The instrument's software version is displayed. Software changes are communicated to the test laboratory. | yes | 50 |

| Performance criterion | Requirement | Test result | Satisfied | Page |
|---|--|---|-----------|------|
| 7.4 Requirements on performance characteristics for testing in the laboratory | | | | |
| 7.4.1 General requirements | The manufacturer's specifications in the instruction manual shall not contradict the results of the performance test. | Tests were performed using the performance characteristics specified in VDI standard 4202, Part 1 (2018) and standard EN 14626 (2012) | yes | 51 |
| 7.4.2 Test requirements | Has to comply with the requirements set out in VDI standard 4202-1:2018. | Tests were performed using the performance characteristics specified in VDI standard 4202, Part 1 (2018) and standard EN 14626 (2012) | yes | 52 |
| Section 8.4 provides a summary of the evaluation of performance characteristics determined in the laboratory. | | | | |
| 7.5 Requirements on performance characteristics for testing in the field | | | | |
| 7.5.1 General requirements | Has to comply with the requirements set out in VDI standard 4202-1:2018. | Tests were performed using the performance characteristics specified in VDI standard 4202, Part 1 (2018) and standard EN 14626 (2012) | yes | 67 |
| 7.5.2 Location for the field test | The monitoring station for the field test is to be chosen according to the requirements of the 39 th BImSchV such that the expected concentrations of the measured components correspond to the designated task. The equipment of the monitoring station shall allow the implementation of the field test and shall fulfil all requirements considered to be necessary during measurement planning. | The field test location was selected in compliance with the 39 th BImSchV. | yes | 68 |
| 7.5.3 Test requirements | The measuring systems shall be installed in the monitoring station and, after connecting to the existing or separate sampling system, activated properly. The adjustments of the measuring system shall meet the specifications of the manufacturer. All adjustments are to be documented in the test report. | During the field test, the measuring system was operated and serviced according to the manufacturer's instructions. | yes | 69 |
| Section 8.5 provides a summary of the evaluation of performance characteristics determined in the field. | | | | |

| Performance criterion | Requirement | Test result | Satisfied | Page |
|---|--|--|-----------|------|
| 8.4 Procedures for determination of the performance characteristics during the laboratory test according to EN 14626 | | | | |
| 8.4.3 Response time | Rise and fall response time ≤ 180 s each. Difference between rise and fall response time ≤ 10 s. | The values determined remained considerably below the maximum permissible response time of 180 s at all times. The maximum determined response time for system 1 was 42 sec. For system 2 it was 41 sec. | yes | 76 |
| 8.4.4 Short-term drift | The short-term drift at zero must be ≤ 0.1 µmol/mol/12 h. The short-term drift at span level must be ≤ 0.6 µmol/mol/12 h. | For instrument 1 the value for the short-term drift at zero point was 0.05 µmol/mol. For instrument 2 it was 0.00 µmol/mol. For instrument 1 the value for the short-term drift at span point was 0.17 µmol/mol. For instrument 2 it was 0.31 µmol/mol. | yes | 80 |
| 8.4.5 Repeatability standard deviation | The performance criteria are as follows: Repeatability standard deviation at zero shall not exceed 0.3 µmol/mol. At a sample gas concentration at the span point it shall not exceed 0.4 µmol/mol. | For instrument 1 the value for the repeatability standard deviation at zero point was 0.03 µmol/mol. For instrument 2 it was 0.03 µmol/mol. Repeatability standard deviation at span point was 0.05 µmol/mol for instrument 1 and 0.05 µmol/mol for instrument 2. | yes | 84 |
| 8.4.6 Lack of fit of linearity of the calibration function | The deviation from the linearity of the calibration function at zero shall not exceed 0.5 µmol/mol. At concentrations above zero, it shall not exceed 4% of the measured value. | The deviation from the linear regression line for instrument 1 is -0.01 µmol/mol at zero point and no more than 2.25% of the nominal value for concentrations above zero. The deviation from the linear regression line for instrument 2 is 0.16 µmol/mol at zero point and no more than 2.21% of the nominal value for concentrations above zero. | yes | 87 |
| 8.4.7 Sensitivity coefficient of sample gas pressure | The sensitivity coefficient of sample gas pressure shall be ≤ 0.7 µmol/mol/kPa. | For instrument 1, the sensitivity coefficient of sample gas pressure was 0.11 µmol/mol/kPa. For instrument 2, the sensitivity coefficient of sample gas pressure was 0.02 µmol/mol/kPa. | yes | 92 |

| Performance criterion | Requirement | Test result | Satisfied | Page |
|--|---|---|-----------|------|
| 8.4.8 Sensitivity coefficient of sample gas temperature | The sensitivity coefficient of sample gas temperature shall be $\leq 0.3 \mu\text{mol/mol/K}$. | For instrument 1, the sensitivity coefficient of sample gas temperature was $0.00 \mu\text{mol/mol/K}$. For instrument 2, the sensitivity coefficient of sample gas temperature was $0.00 \mu\text{mol/mol/K}$. | yes | 94 |
| 8.4.9 Sensitivity coefficient of surrounding temperature | The sensitivity coefficient of surrounding temperature shall be $\leq 0.3 \mu\text{mol/mol/K}$. | The sensitivity coefficient bst of the surrounding temperature did not exceed the performance criterion specified at $0.3 \mu\text{mol/mol/K}$. For the purpose of uncertainty calculation, the largest sensitivity coefficient bst is used for both instruments. This was $0.076 \mu\text{mol/mol/K}$ for instrument 1 and $0.064 \mu\text{mol/mol/K}$ for instrument 2. | yes | 96 |
| 8.4.10 Sensitivity coefficient of electrical voltage | The sensitivity coefficient of electrical voltage shall not exceed $0.3 \mu\text{mol/mol/V}$. | At no test item did the sensitivity coefficient of electrical voltage bv exceed the value of $0.3 \mu\text{mol/mol/V}$ specified in standard EN 14626. For the purpose of the uncertainty calculation, the largest bv is used for both instruments. This was $0.00 \mu\text{mol/mol/K}$ for instrument 1 and $0.00 \mu\text{mol/mol/K}$ for instrument 2. | yes | 99 |
| 8.4.11 Interferents | Interfering components at zero and at the concentration c_i (at the level of the 1-hour limit = $8.6 \mu\text{mol/mol}$ for CO). The maximum permissible deviations for the interfering components CO_2 , NO and NO_2 are each $\leq 0.5 \mu\text{mol/mol}$, for $\text{H}_2\text{O} \leq 1.0 \mu\text{mol/mol}$. | This results in a value for the cross-sensitivity at zero of $-0.02 \mu\text{mol/mol}$ for instrument 1 and $-0.11 \mu\text{mol/mol}$ for instrument 2 for H_2O ; $0.00 \mu\text{mol/mol}$ for instrument 1 and $0.17 \mu\text{mol/mol}$ for instrument 2 for CO_2 ; $0.00 \mu\text{mol/mol}$ for instrument 1 and $0.00 \mu\text{mol/mol}$ for instrument 2 for NO and finally $0.02 \mu\text{mol/mol}$ for instrument 1 and $0.05 \mu\text{mol/mol}$ for instrument 2 for N_2O . For the cross-sensitivity at the limit value c_t , the values are $-0.27 \mu\text{mol/mol}$ for instrument 1 and $-0.14 \mu\text{mol/mol}$ for instrument 2 for H_2O ; $-0.06 \mu\text{mol/mol}$ for instrument 1 and $0.05 \mu\text{mol/mol}$ for instrument 2 for CO_2 ; $-0.02 \mu\text{mol/mol}$ for instrument 1 and $0.06 \mu\text{mol/mol}$ for instrument 2 for NO and finally $-0.13 \mu\text{mol/mol}$ for instrument 1 and $-0.09 \mu\text{mol/mol}$ for instrument 2 for N_2O . | yes | 101 |
| 8.4.12 Averaging test | The averaging effect shall not exceed 7% of the measured value. | The performance criterion of EN 14626 is fully met with 4.3 % for instrument 1 and 5.8 % for instrument 2. | yes | 104 |

| Performance criterion | Requirement | Test result | Satisfied | Page |
|---|---|---|-----------|------|
| 8.4.13 Difference sample/calibration port | The difference between the sample and calibration ports shall not exceed 1%. | The performance criterion of EN 14626 is fully met with 0.14 % for instrument 1 and -0.06 % for instrument 2. | yes | 107 |
| 8.5 Determination of the performance characteristics during the field test according to EN 14626 | | | | |
| 8.5.4 Long-term drift | The long-term drift at zero point shall not exceed $\leq 0.5 \mu\text{mol/mol}$. Long-term drift at span level shall not exceed 5% of the certification range. | Maximum long-term drift at zero point $DI_{l,z}$ was at $0.02 \mu\text{mol/mol}$ for instrument 1 and $0.04 \mu\text{mol/mol}$ for instrument 2. Maximum long-term drift at span point $DI_{l,s}$ was at -1.56% for instrument 1 and 1.56% for instrument 2. | yes | 109 |
| 8.5.6 Inspection interval | The period of unattended operation of the AMS shall be at least 2 weeks. | The necessary maintenance tasks determine the period of unattended operation. In essence, these include contamination checks, plausibility checks and checks of potential status/error warnings. The external particle filter needs replacing at the measurement site after having been subjected to dust loading. A check of the zero and span point must be carried out at least every 14 days in accordance with EN 14626. | yes | 115 |
| 8.5.5 Reproducibility standard deviation for CO under field conditions | Reproducibility standard deviation under field conditions shall not exceed 5% of the mean value over a period of three months. | The reproducibility standard deviation for carbon monoxide under field conditions was 1.08 % related to the mean value over the duration of the field test of 3 months. Thus, the requirements of EN 14626 are satisfied. | yes | 112 |
| 8.5.7 Period of availability of the analyser | Availability of the analyser shall be at least 90%. | The availability was at 100%. Thus, the requirement of EN 14626 is satisfied. | yes | 116 |

2. Task definition

2.1 Nature of the test

On behalf of Teledyne API, TÜV Rheinland Energy GmbH carried out the performance testing for the N300 ambient air measuring system for carbon monoxide. The test was carried out as a complete performance test.

2.2 Objectives

The AMS is designed to determine carbon monoxide concentrations in ambient air in the following concentration ranges:

| Component | Certification range | Unit |
|-----------------|---------------------|-------------------|
| Carbon monoxide | 0 – 100 | mg/m ³ |

The N300 measures carbon monoxide by means of non-dispersive infrared photometry.

The performance test was carried out on the basis of the current standards / guidelines for performance testing, taking into account the latest developments.

The test was carried out in compliance with the following standards / norms:

- VDI Guideline 4202 Part 1: Automated measuring systems for air quality monitoring – Performance test, declaration of suitability, and certification of point-related measuring systems for gaseous air pollutants, April 2018
- EN 14626: Ambient air - Standard method for the measurement of the concentration of carbon monoxide by non-dispersive infrared spectroscopy, December 2012

3. Description of the AMS tested

3.1 Measuring principle

The N300 ambient air measuring system is a continuous carbon monoxide analyser. The measurement principle is based on non-dispersive infrared photometry. The instrument is designed for the continuous measurement of carbon monoxide in ambient air.



Figure 1: N300 Analysers

The measuring principle is based on the determination of the light absorption by the gas to be measured in the wavelength range characteristic of the gas. The evaluation is done by measuring the absorption based on the dependence between the gas concentration and the amount of absorbed light according to Lambert-Beer's law:

$$I = I_0 * e^{-\alpha Lc}$$

I_0 is light intensity without absorption

I is intensity with absorption

L is the absorption path or distance that the light travels during absorption.

c is the concentration of the absorbing gas, in this case CO

α is the absorption coefficient (this provides information about the degree of absorption).

The analyser determines the amount of CO in the sample chamber by calculating the ratio between the peak of the measurement pulse (IR Measure) and the peak of the reference pulse (IR Reference). If there are no gases in the sample chamber that absorb light at $4.7\mu\text{m}$, the high concentration of CO in the gas mixture of the reference chamber attenuates the intensity of the IR beam by 60%, corresponding to an M/R ratio of about 2.4:1. When CO is added to the sample chamber, the peaks of both cells are further attenuated by a certain percentage. Since the intensity of the light passing through the sample chamber is stronger, the effect of additional attenuation is also stronger. This makes IR Measure more sensitive to the presence of CO in the sample chamber than IR Reference, and the ratio between them (M/R) more closely approaches 1:1 as the concentration of CO in the sample chamber increases. Once the analyser has calculated this ratio, a stored reference table is used to linearise the unit's response together with the interpolation. This linearised concentration value is used together with the SLOPE and OFFSET values to calculate the CO concentration in the sample chamber.

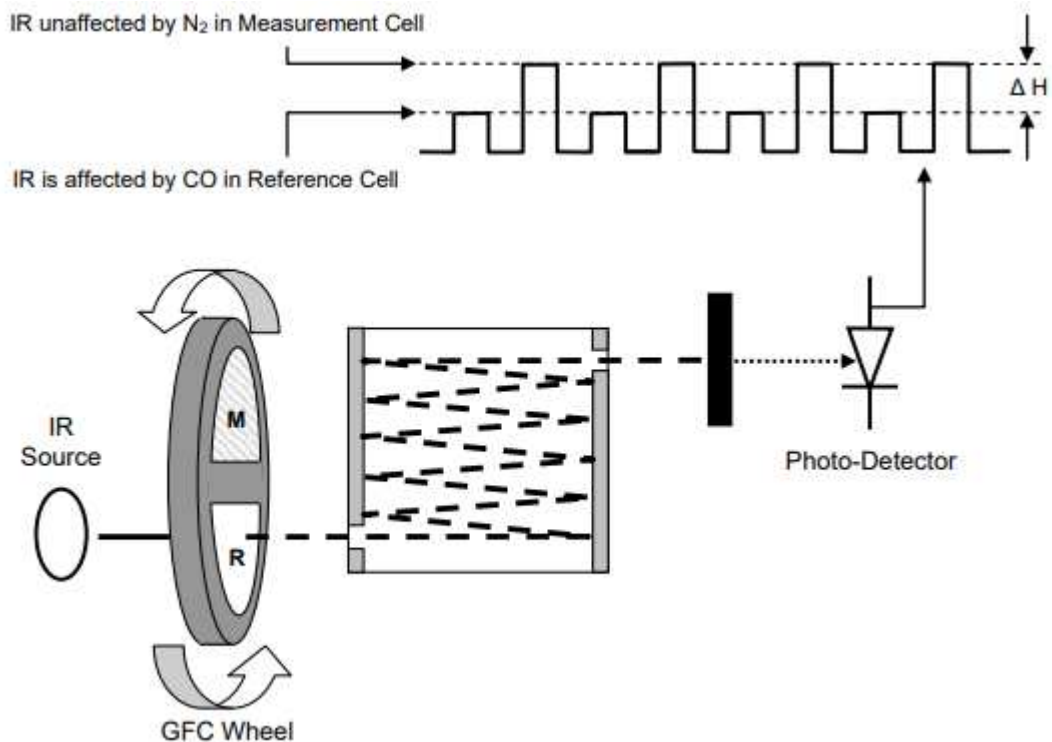


Figure 2: Flow schematic

3.2 AMS scope and set-up

The N300 analyser uses a heated infrared source to generate a beam of broadband IR light of a known intensity (measured during instrument calibration). This beam is sent several times through the sample chamber filled with sample gas. The sample chamber uses mirrors at each end to send the IR beam back and forth through the chamber several times (see Figure 3) to create a long absorption path. The absolute length that the reflected light travels is directly related to the intended accuracy of the instrument. The lower the concentrations that the instrument is to detect, the longer the light path must be to produce detectable attenuations.

On leaving the chamber, the light beam passes through a band-pass filter which only allows light with a wavelength of 4.7 μm to pass. Finally, the beam hits a photodetector that converts the light signal to a modulated voltage signal representing the attenuated intensity of the beam.

Since water vapour also absorbs light at 4.7 μm , a gas filter correlation (GFC) wheel is added to the IR light path to prevent the interference effect of water vapour. The GFC wheel is a metallic wheel with two chambers. The chambers are hermetically sealed on both sides with a material transparent to 4.7 μm IR radiation. Each cavity is mainly filled with gas mixtures. One chamber is filled with pure N_2 (the measuring chamber). The other is filled with a mixture of N_2 and a high concentration of CO (the reference chamber). As the GFC wheel rotates, the IR light passes alternately through these two cavities. When the beam hits the reference chamber, the CO in the gas filter wheel clears the beam of most IR at 4.7 μm . When the light beam hits the measurement chamber, the N_2 in the filter wheel does not absorb the IR light. Thus, a fluctuation of the intensity of the IR light on the photodetector is generated, whereby a measured signal can be determined.

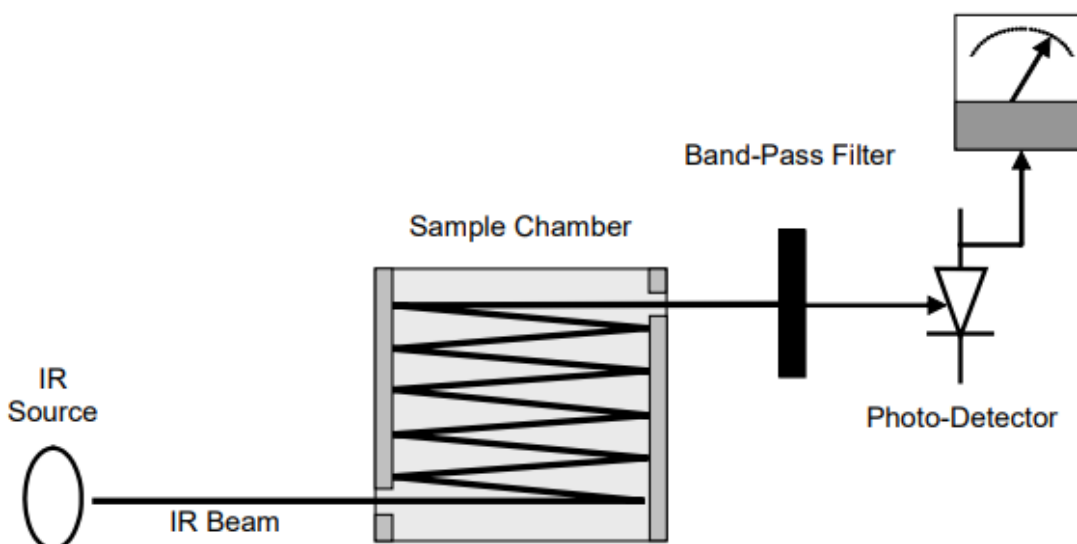


Figure 3: Flow schematic

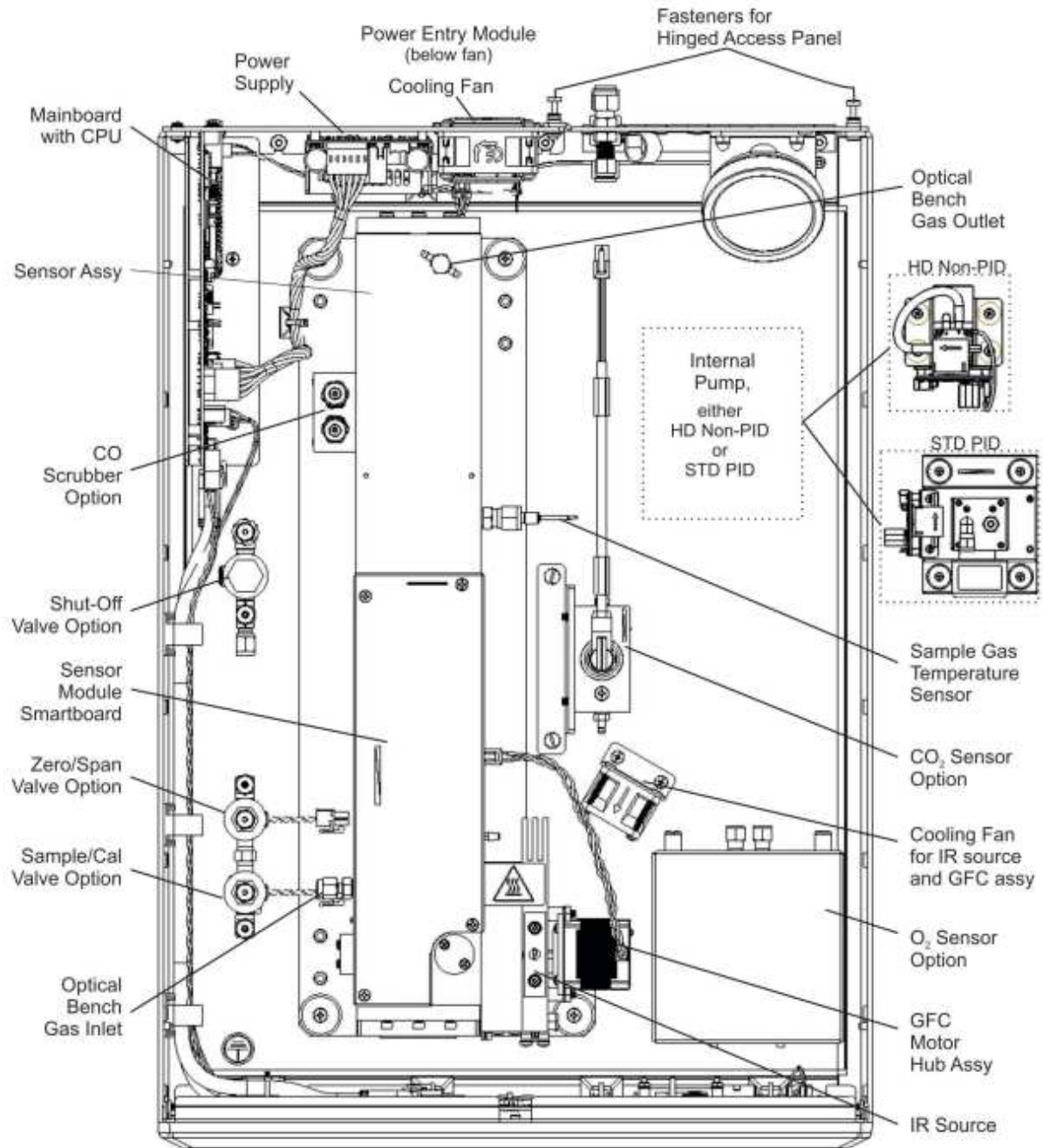


Figure 4: N300 Interior view - top view

Table 2 lists a number of important technical specifications of the N300.

Table 2: Technical data N300 (manufacturer's data)

| | |
|----------------------------------|---|
| Measured range: | Maximum 0–1,000 ppm (freely selectable) |
| Units: | ppm or mg/m ³ |
| Measured compounds: | Carbon monoxide |
| Sample flow rate | Approx. 0.8 litre/min (during the test) |
| Outputs: | <ul style="list-style-type: none"> • Ethernet TCP/IP • Serial interface, RS232 • 0 – 5/10 Volt analogue • 4 – 20 mA analogue • USB |
| Input voltage: | 230 V or 115 V 50 Hz or 60 Hz |
| Power: | 115 W; 150 W max. |
| Dimensions (l x w x h) / weight: | 597 x 432 x 178 mm / ~ 18 kg |

3.3 AMS adjustment

The measuring system was commissioned according to manufacturer instructions. No internal zero adjustment cycle was activated during performance testing.

The N300 analyser firmware processes sample concentration data through a programmed adaptive filter. During operation, the firmware can automatically switch between two different temporal filter lengths depending on the conditions. When measuring stable concentrations, the firmware calculates an average over the last measurements by default. This ensures stable measurement results. If the filter detects rapid changes in concentration, it reduces the averaging time to allow the analyser to respond more quickly. The adaptive filter is always active and can neither be adjusted nor deactivated by the user.

3.4 Alternative assemblies

Particle filter

The N300 measuring system has a particle filter directly behind the sample gas inlet. The particle filter is located on a panel secured with two screws on the back of the AMS. The manufacturer supplies the measuring system with two different types of filters.

The measuring system is available with a standard Teflon particle filter with a pore size of 5 μm and a diameter of 47 mm. This type of filter has been used for many years in Teledyne ambient air measuring systems.

Alternatively, it is possible to equip the N300 measuring system with a DFU filter cartridge with a pore size of 0.01 μm (a so-called long-life filter). For this filter, the manufacturer specifies a replacement interval of up to 6 months. The replacement interval for the particle filter is of course dependent on the dust load at the installation site and must be determined individually for each measuring point. The filter can be changed within a few minutes with simple tools for both types of filter.



Figure 5: DFU filter (left) and 47 mm round filter (right)

The entire performance test was carried out with the DFU filter. The filter was not replaced during the field test or between the laboratory and field test.

Following the last long-term drift test in the field test, the DFU filter was exchanged for the 47 mm filter. The test gas task was then repeated. The measuring system showed comparable measured results with the new filter. The results are shown in Appendix 4.

The N300 measuring system can be equipped with a DFU particle filter as well as with a 47 mm round filter. The replacement interval for the particle filter is of course dependent on the dust load at the installation site and must be determined individually for each measuring point.

Pump

The manufacturer offers two different types of pumps for the N300 measuring system.

- The standard pump is a regulated pump (PID controlled). This pump regulates itself based on the measured nominal flow rate (800 ml/min). If the flow rate deviates from the set target value, the pump adjusts its output accordingly to achieve the target flow rate.
- An unregulated pump (HD Non-PID). This type of pump always runs at 100 % capacity. The nominal flow rate is set by a built-in critical nozzle. If the flow deviates more than 10 % from the nominal value, an operational status signal is generated. The critical nozzle is located in the pump component and thus behind the measuring cell.

Both pump types are controlled by the same control board. When using the "PID Controlled" type, it is only necessary to activate the control in the software.

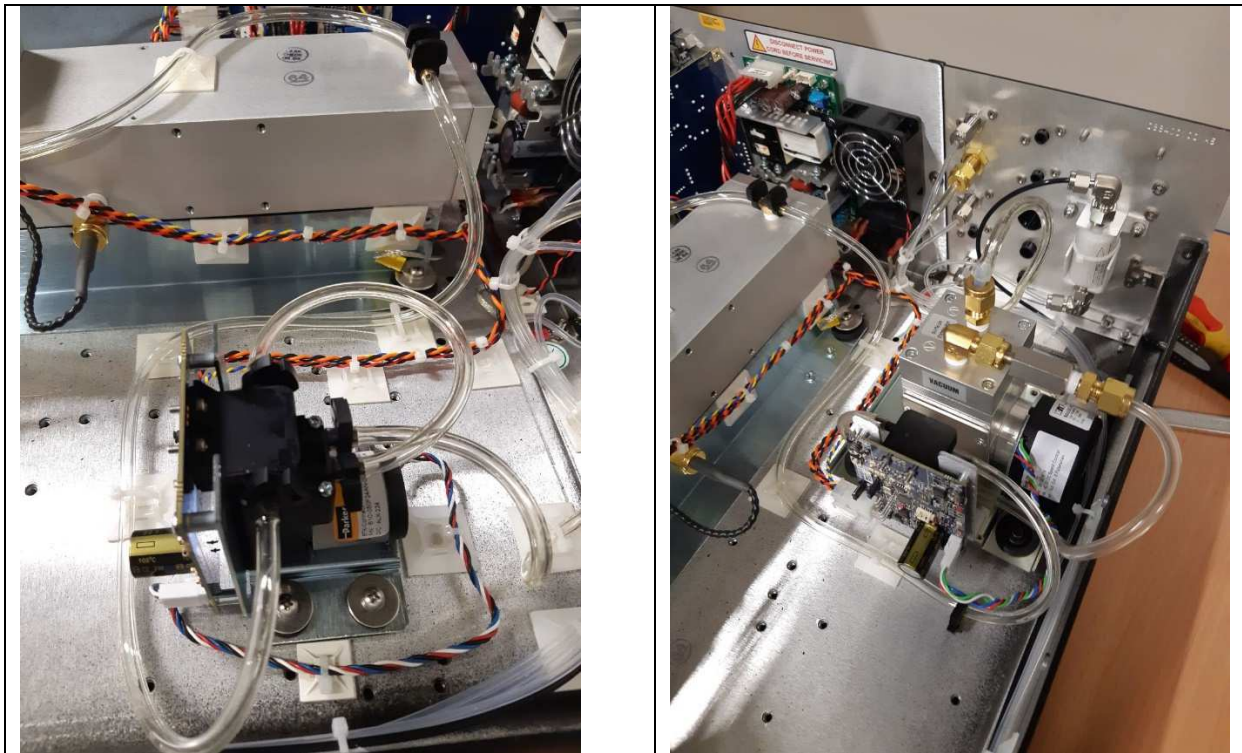


Figure 6: Regulated pump (left) and non-regulated pump (right)

The entire performance test was carried out with the regulated (PID controlled) pump.

After completion of the field test, the regulated pump was exchanged. Subsequently, the test point "Sensitivity to sample gas pressure" was carried out with the second, unregulated pump type.

The above-mentioned test point was also fulfilled by the measuring system when using the second, unregulated pump type. Results are shown in Appendix 3.

The N300 measuring system can be equipped with a controlled pump (PID controlled), as well as with a non-regulated pump (HD Non-PID).

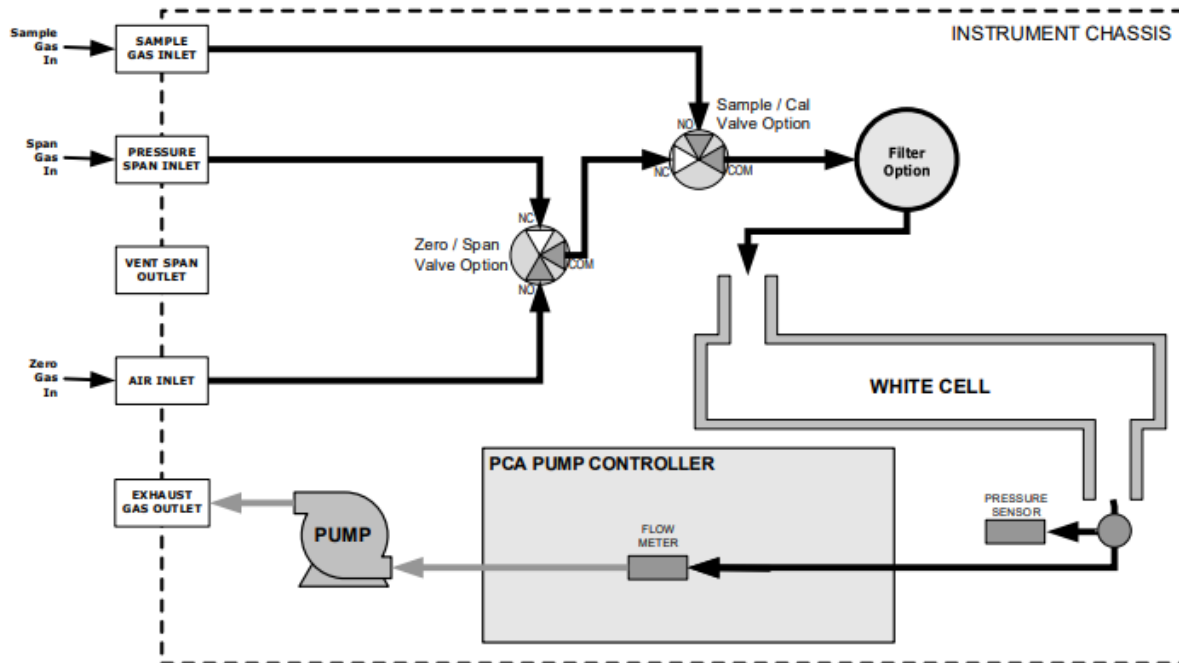


Figure 7: Flow diagram N300

4. Test programme

4.1 General remarks

Performance testing was carried out with two identical instruments, type N300, with serial numbers

Instrument 1: SN 54 and
Instrument 2: SN 55

Testing was carried out with the software version "Rev. 1.9.0".

The test comprised a laboratory test to determine the performance characteristics as well as a field test over a period of several months.

In this report, the heading for each performance criterion cites the minimum requirements according to the relevant standards ([1, 2, 3]) including chapter number and wording.

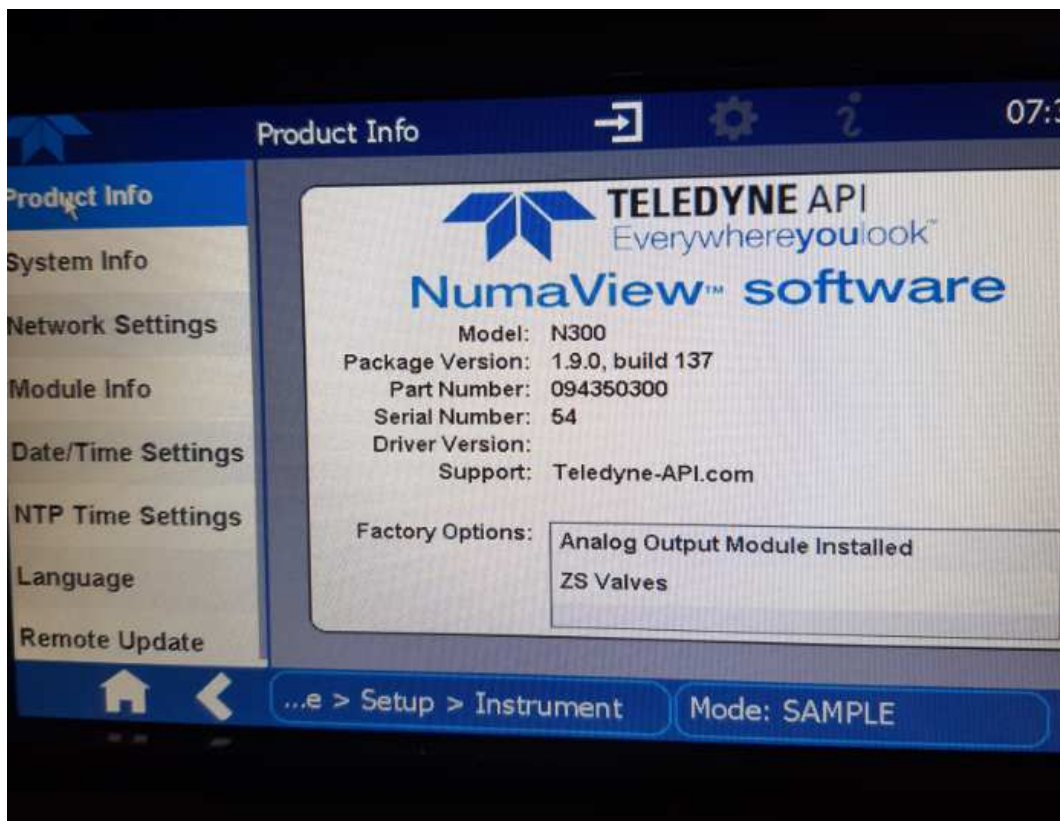


Figure 8: Software version for the N300 test instruments

4.2 Laboratory test

The laboratory test was carried out with two identical instruments, type N300, with serial numbers SN: 54 and SN: 55. Standards [1] and [2] specify the following test programme for the laboratory test:

- Description of instrument functions
- General requirements
- Calibration line fit
- Short-term drift
- Repeatability standard deviation
- Sensitivity to sample gas pressure
- Sensitivity to sample gas temperature
- Sensitivity to surrounding temperature
- Sensitivity to supply voltage
- Cross-sensitivities
- Averaging effect
- Response time
- Difference sample/calibration inlet

Measured values were recorded using an external data logger. Chapters 6 and 7 summarize the results of the laboratory tests.

4.3 Field test

The field test according to EN 14626 and VDI 4202-1 was carried out with two identical N300 measuring systems from 16.05.2022 to 22.08.2022. The instruments used were identical to those used for laboratory testing. The serial numbers were:

Instrument 1: SN 54
Instrument 2: SN 55

The following test programme was determined for the field test:

- Long-term drift
- Period of unattended operation
- Availability
- Reproducibility standard deviation under field conditions

Measured values were recorded using an external data logger. Chapters 6 and 7 summarize the results of the field tests.

To carry out the field test, the measuring systems were installed in a measuring station near Cologne. The measuring station is located in the direct vicinity of a busy, six-lane national motorway. The distance from the measuring station to the nearest roadway is approx. 5.0 m.



Figure 9: Measuring station for conducting the field test

The measuring systems were installed in the station, which was air-conditioned to 20 °C, in a 19" rack and connected to a sampling system. Both systems were installed with a sample gas line of 2.5 m through a T-piece at the same connection of the sampling system. This ensured that both instruments made a representative measurement of the same sample air volume. The sampling head is located on the front side of the measuring station at a total height of approx. 3.00 m.



Figure 10: N300 in the measuring station during the field test

5. Reference Measurement Method

5.1 Method of measurement

Test gases used for adjustment purposes during the test

Certified carbon monoxide test gases were used for the purpose of testing. The specified test gases were used during the entire test and, where necessary, were diluted with the help of a (Hovacal) mass flow controller.

| | |
|---|-------------------------------|
| Zero gas: | Synthetic air |
| Test gas CO: | 52.9 ppm in synth. air |
| Number of test gas cylinder: | 17003 |
| Manufacturer/manufacturing date: | Nippon Gases / 27.04.2021 |
| Stability guarantee / certified: | 60 months |
| Checking of the certificate by / on: | Own laboratory / 16.09.2021 |
| Measurement uncertainty as per calibration certificate: | 2% |
| Test gas CO: | 205 ppm in synth. air |
| Number of test gas cylinder: | 16954 |
| Manufacturer/manufacturing date: | Nippon Gases / 07.04.2021 |
| Stability guarantee / certified: | 60 months |
| Checking of the certificate by / on: | Own laboratory / 27.05.2021 |
| Rel. uncertainty according to certificate: | 2% |

6. Test results in accordance with VDI 4202, Part 1 (2018)

6.1 7.3 General requirements

6.1 7.3.1 Measured value display

The measuring system shall have an operative measured value display as part of the instrument.

6.2 Equipment

No additional equipment is required.

6.3 Testing

It was checked whether the measuring system has a measured value display.

6.4 Evaluation

The measuring system has an operative measured value display at the front of the instrument.

6.5 Assessment

The measuring system has an operative measured value display at the front of the instrument.

Criterion satisfied? yes

6.6 Detailed presentation of test results

Figure 11 shows the candidate system with the integrated measured value display.



Figure 11: N300 with measured value display

6.1 7.3.2 Calibration inlet

The measuring system may have a test gas inlet separate from the sample gas inlet.

6.2 Equipment

No additional equipment is required.

6.3 Testing

It was tested whether the instrument includes a test gas inlet separate from the sample gas inlet.

6.4 Evaluation

The measuring system has a test gas inlet separate from the sample gas inlet at the instrument back.

6.5 Assessment

The measuring system has a test gas inlet separate from the sample gas inlet at the instrument back.

Criterion satisfied? yes

6.6 Detailed presentation of test results

The functionality of the separate test gas inlet is shown under point:

7.1 8.4.13 Difference sample/calibration port explains the functionality of the separate sample gas inlet.

6.1 7.3.3 Easy maintenance

Necessary maintenance of the measuring systems should be possible without large effort, if possible from outside.

6.2 Equipment

No additional equipment is required.

6.3 Testing

The necessary regular maintenance was performed in accordance with the instruction manual.

6.4 Evaluation

The user is advised to perform the following maintenance activities:

1. Checking the operational status
The operational status may be monitored and checked by visual inspections of the instrument's display or via an external PC connected to the AMS.
2. Checking the particle filter for the test gas inlet. The frequency at which the particle filter needs to be replaced depends on the dust concentrations in ambient air.

6.5 Assessment

Maintenance work can be carried out externally with standard tools and reasonable effort.

Criterion satisfied? yes

6.6 Detailed presentation of test results

The work on the instruments was carried out during the test based on the work and work procedures described in the manual in chapter 5. Complying with the procedures described in the manual, no difficulties were identified. All maintenance activities were possible without any difficulties using standard tools.

6.1 7.3.4 Functional check

If the operation or the functional check of the measuring system require particular instruments, they shall be considered as part of the measuring system and be applied in the corresponding sub-tests and included in the assessment.

The performance of test gas generators, which are part of the measuring system, shall be checked by comparing it to the requirements for test gases used for continuous quality assurance. They have to provide a status signal indicating that they are ready for operation. It must be possible to control them directly or remotely.

6.2 Equipment

Operating manual

6.3 Testing

The tested measuring system does not have internal devices for operating the functional check. The current operating status of the measuring system is continuously monitored and any issues will be flagged via a series of different error messages.

The functional check of the instruments was performed using external test gases.

6.4 Evaluation

The tested measuring system does not have internal devices for operating the functional check. The current operating status is continuously monitored and any issues will be flagged via a series of different error messages.

External monitoring of the zero and span point using test gases is possible.

6.5 Assessment

The tested measuring system does not have internal devices for operating the functional check.

Criterion satisfied? not applicable

6.6 Detailed presentation of test results

Not applicable.

6.1 7.3.5 Set-up times and warm-up times

The set-up times and warm-up-times shall be specified in the instruction manual.

6.2 Equipment

Operating manual and additional clock.

6.3 Testing

The measuring systems were set up following the manufacturer's instructions. Set-up times and warm-up times were recorded separately.

Necessary constructional measures prior to the installation such as the installation of a sampling system in the analysis room were not taken into account.

6.4 Evaluation

The set-up time is of course dependent on the conditions at the installation site as well as the availability of the power supply at the installation site. Since the N300 is a compact analyser, the set-up time is mainly determined by the following tasks:

- Connecting the AMS to supply voltage;
- Connecting the tubing (sampling, discharged air).

Commissioning and changing positions in the laboratory on various occasions (installation in/removal from the climatic chamber) as well as the installation at the field test location resulted in a set-up time of ~30 minutes. Information on the set-up time can be found in the manual in chapter 2.3. on page 29.

When switched on from a completely cold state, the unit required approx. 60 minutes for the system to complete the warm-up phase and enter measurement mode. The determined warm-up time is in accordance with the information in the manual. In the manual, the warm-up phase is given as approx. 60 minutes (chapter 2.3.4.2, page 49).

The measuring system has to be installed at a location where it is protected from weather conditions, e.g. in an air-conditioned measurement container.

6.5 Assessment

Set-up times and warm-up times have been determined.

It is possible to operate the measuring system at different locations with limited effort. The set-up time is approx. 0.5 - 1 hour and the warm-up time is approx. one hour, depending on the necessary stabilisation time.

Criterion satisfied? yes

6.6 Detailed presentation of test results

Not applicable.

No German manual yet. Content is known to TAPI - still to be checked!

6.1 7.3.6 Instrument design

The instruction manual shall include specifications of the manufacturer regarding the design of the measuring system. The main elements are:

Instrument shape (e.g. bench mounting, rack mounting, free mounting)

Mounting position (e.g. horizontal or vertical mounting)

Safety requirements

Dimensions

Weight

Power consumption

Preventing condensation within the analyser.

6.2 Equipment

Operation manual and a measuring system for recording energy consumption (Gossen Metrawatt) and scales.

6.3 Testing

The instrument design of the measuring systems handed over for testing was compared to the description provided in the manual. The energy consumption specified was verified over 24 h during normal operation in the field test.

6.4 Evaluation

The measuring system is intended for horizontal mounting (e.g. on a table or in a rack) sheltered from weather conditions. The temperature at the site of installation must be between 0 °C and 45 °C.

The dimensions and weight of the measuring system correspond to the information provided in the operating manual.

The manufacturer specifies a maximum power consumption of 115 W. During start-up (warm-up) a short-term consumption of 150 W was recorded. During normal operation, energy consumption is 100 W.

6.5 Assessment

Specifications made in the instruction manual concerning instrument design are complete and correct.

Criterion satisfied? yes

6.6 Detailed presentation of test results

Not required for this performance criterion.

6.1 7.3.7 Unintended adjustment

It shall be possible to secure the adjustment of the measuring system against illicit or unintended adjustment during operation. Alternatively, the operating manual shall specifically note that the measuring system may only be installed in a secured area.

6.2 Equipment

The test of this criterion did not require any further equipment.

6.3 Testing

The measuring system can be operated via a display at its front with a touch panel or via a PC connected to the measuring system directly or via a network.

The system has an internal function (password protection) against unintentional or unauthorised adjustment. It is only possible to change parameters or adjust the measuring system after entering the password.

6.4 Evaluation

On entering the correct password, it is possible to change instrument parameters affecting measurement characteristics via the control panel and via an external computer.

6.5 Assessment

The measuring system is secured against unintended and unauthorised adjustment of instrument parameters by way of a password.

Criterion satisfied? yes

6.6 Detailed presentation of test results

Not required for this performance criterion.

6.1 7.3.8 Data output

The output signal shall be provided digitally and/or as analogue signals (e.g. 4 mA to 20 mA).

6.2 Equipment

Analogue Yokogawa data logger, PC

6.3 Testing

The measuring system provides the following transmission routes: Modbus, RS232, RS485, USB, digital outputs, TCP/IP network. Moreover, the measuring system also provides an option to output analogue signals (V or mA).

6.4 Evaluation

Measured signals are displayed on the back of the instrument as follows:

Analogue: 0 – 20, 2 – 20, 4 – 20 mA or 0 – 1/5/10 V, Selectable concentration range

Digital RS232, USB, digital inputs and outputs, TCP/IP network

6.5 Assessment

Measured signals are provided as analogue (0–20 mA, 4–20 mA or 0–1 V, 0–10 V) and digital signals (via TCP/IP, RS 232, USB).

The instrument provides additional interfaces (e.g. analogue outputs) for connecting additional measuring or other peripheral instruments.

Criterion satisfied? yes

6.6 Detailed presentation of test results

Not required for this performance criterion.

6.1 7.3.9 Digital interface

The digital interface shall allow the transmission of output signals, status signals, and information like instrument type, measurement range, and measured component and unit. The digital interface shall be described fully in respective standards and guidelines.

Access to the measuring system via digital interfaces, e.g. for data transmission, shall be secured against unauthorised access, e.g. by a password.

6.2 Equipment

PC

6.3 Testing

The measuring system provides the following transmission routes: Modbus, RS232. The measuring system also has the option of outputting analogue signals (optional).

6.4 Evaluation

Digital measured signals are provided as follows:

Modbus, RS232

Digital output signals were checked. All relevant pieces of information such as measured signals, status signals, measured component, measuring range, unit and instrument information can be transmitted digitally. Access to unit parameters is password protected.

6.5 Assessment

The digital measured value transmission functions correctly and is protected against unauthorised access by password protection.

Criterion satisfied? yes

6.6 Detailed presentation of test results

Not required for this performance criterion.

6.1 7.3.10 Data transmission protocol

The measuring system shall contain at minimum one data transmission protocol for the digital transmission of the output signal.

Every data transmission protocol provided by the manufacturer for the measuring system shall allow the correct transmission of the data and detect errors in the transmission. The data transmission protocol including the used commands is to be documented in the instruction manual. The data transmission protocol shall allow to transmit at minimum the following data:

Identification of the measuring system

Identification of measured components

Unit

Output signal with time signature (date and time)

Operation and error status

Operating commands for remote control of the measuring systems

All data are to be transmitted as clear text (ASCII characters).

6.2 Equipment

PC

6.3 Testing

The measuring system has an installed Modbus Bavaria/Hesse transmission protocol as standard. Other data transfer protocols are available in consultation with the manufacturer.

6.4 Evaluation

The measuring system has a Modbus Bavaria/Hesse transmission protocol installed as standard. Other data transfer protocols are available in consultation with the manufacturer. Measured and status signals are transmitted correctly.

6.5 Assessment

The measuring system has a Modbus Bavaria/Hesse transmission protocol installed as standard. Measured and status signals are transmitted correctly. The configuration is listed in the manual in Appendix A.2 from page 146.

Criterion satisfied? yes

6.6 Detailed presentation of test results

Not required for this performance criterion.

6.1 7.3.11 Measuring range

The upper limit of measurement of the measuring systems shall be greater or equal to the upper limit of the certification range.

6.2 Equipment

The test of this criterion did not require any further equipment.

6.3 Testing

It was checked whether the upper limit of the measuring range for the measuring system is greater than or equal to the upper limit of the certification range.

6.4 Evaluation

In theory, it is possible to set the measuring system to measuring ranges of up to 0–1,000 ppm.

Possible measuring range: 1,000 ppm
Upper limit of the certification range for CO: 100 mg/m³ (86 ppm)

6.5 Assessment

A measuring range of 0 – 86 ppm (100 mg/m³) for carbon monoxide is set as standard. Supplementary measuring ranges up to 0 – 1,000 ppm are possible.

The measuring system’s upper limit of measurement exceeds the upper limit of the certification range in each case.

Criterion satisfied? yes

6.6 Detailed presentation of test results

Standard VDI 4202, Part 1 as well as the standard EN 14626 contain the following minimum requirements for the certification ranges of continuous ambient air quality measuring instruments for carbon monoxide:

Table 3: Certification ranges VDI 4202-1 and EN 14626

| Measured component | CR lower limit | CR upper limit | Limit value | Evaluation period |
|--------------------|----------------------|----------------------|----------------------|-------------------|
| | in mg/m ³ | in mg/m ³ | in mg/m ³ | |
| Carbon monoxide | 0 | 100 | 10 | 8 h |

6.1 7.3.12 Negative output signals

Negative output signals or measured values may not be suppressed (live zero).

6.2 Equipment

The test of this criterion did not require any further equipment.

6.3 Testing

It was tested in the laboratory as well as in the field whether the measuring system can also output negative measured values.

6.4 Evaluation

The AMS displays negative values.

6.5 Assessment

The measuring system also provides negative output signals.

Criterion satisfied? yes

6.6 Detailed presentation of test results

Not applicable.

6.1 7.3.13 Failure in the mains voltage

In case of malfunction of the measuring system or failure in the mains voltage uncontrolled emission of operation and calibration gas shall be avoided. The measurement parameters shall be secured by buffering against loss caused by failure in the mains voltage. When mains voltage returns, the instrument shall automatically reach the operation mode and start the measurement according to the operating instructions.

6.2 Equipment

Not required for this performance criterion.

6.3 Testing

A simulated failure in the mains voltage served to test whether the instrument remained fully functional and reached operation mode on return of the mains voltage.

6.4 Evaluation

Since the measuring systems do not rely on operation and calibration gases, uncontrolled emission of gases is not possible.

Once the measuring system resumes operation after a power failure it is in warm-up mode until it reaches an appropriate operating temperature again. How long it will take up to fully warm up again will depend on the ambient conditions and the temperature of the system when switching it back on again. After completion of the warm-up phase, the measuring system will switch back automatically into the mode which had been active before the failure in mains voltage. The warm-up phase is signalled via various temperature alerts.

6.5 Assessment

On return of mains voltage, the instrument returns to normal operating mode and automatically resumes measuring.

Criterion satisfied? yes

6.6 Detailed presentation of test results

Not applicable.

6.1 7.3.14 Operating states

The measuring system shall allow the control of important operating states by telemetrically transmitted status signals.

6.2 Equipment

Computer for data acquisition

6.3 Testing

The measuring system has various interfaces such as RS232, LAN/WLAN or USB and analogue inputs and outputs. For example, the LAN/WLAN interface can be used to establish a simple connection between the analyser and an external PC. This enables telemetric data transmission, configuration settings can be made and the analyser display can be shown on the PC. In this mode it is possible to access and operate all the information and features from the analyser display via the computer.

6.4 Evaluation

The measuring system allows for comprehensive monitoring and control via various connectors.

6.5 Assessment

The measuring system provides various ports to ensure comprehensive monitoring and control via an external computer.

Criterion satisfied? yes

6.6 Detailed presentation of test results

Not applicable.

6.1 7.3.15 Switch-over

Switch-over between measurement and functional check and/or calibration shall be possible telemetrically by computer control or manual intervention.

6.2 Equipment

Not required for this performance criterion.

6.3 Testing

It is possible to monitor and control the AMS on the instrument itself or telemetrically.

6.4 Evaluation

All operating procedures which do not require on-site practical handling may be performed both by the operator on the instrument itself or telemetrically.

6.5 Assessment

As a rule, all necessary work for functional checks can be monitored and controlled directly on the instrument or by telemetric remote control.

Criterion satisfied? yes

6.6 Detailed presentation of test results

Not applicable.

6.1 7.3.16 Instrument software

The measuring system shall be able to display the version of the instrument software.

6.2 Equipment

Not required for this performance criterion.

6.3 Testing

It was tested whether the software version can be displayed on the instrument. The AMS manufacturer was informed of the obligation to communicate any changes to the instrument software to the test laboratory.

6.4 Evaluation

The current software version is displayed when switching on the instrument. Furthermore, it can be accessed via menu item *configuration* at any time.

Testing was carried out with the software version "Rev. 1.9.0".

6.5 Assessment

The instrument's software version is displayed. Software changes are communicated to the test laboratory.

Criterion satisfied? yes

6.6 Detailed presentation of test results

Figure 8 shows the software version displayed by the measuring system.

6.1 7.4 Requirements on performance characteristics for testing in the laboratory

6.1 7.4.1 General requirements

The performance characteristics which shall be determined during testing in the laboratory and their related performance criteria for measured components according to the 39th BImSchV are given in Table A1 of VDI 4202-1.

The certification range for other components is to be defined. Performance criteria are to be defined by drawing from Table A1 of standard VDI 4202-1 (2018). These definitions shall be cleared with the relevant body before testing.

The determination of the performance characteristics shall be done according to the procedures described in section 8.4.

6.2 Equipment

Not required for this performance criterion.

6.3 Testing

The test was carried out using the performance criteria and requirements of VDI 4202 Part 1 (2018) and EN 14626 (2012).

6.4 Evaluation

Not applicable.

6.5 Assessment

Tests were performed using the performance characteristics specified in VDI standard 4202, Part 1 (2018) and standard EN 14626 (2012)

Criterion satisfied? yes

6.6 Detailed presentation of test results

Not applicable.

6.1 7.4.2 Test requirements

Before operating the measuring system, the instruction manual of the manufacturer shall be followed particularly with regard to the set-up of equipment and the quality and quantity of the consumable supplies necessary.

The measuring system shall be allowed to warm up for the duration specified by the manufacturer before undertaking any tests. If the warm-up time is not specified, a minimum of 4 h applies.

If auto-scale or self-correction functions are arbitrary, these functions shall be turned off during the laboratory test.

If auto-scale or self-correction functions are not arbitrary but treated as “normal operating conditions”, times and values of the self-correction shall be available for the test laboratory. The values of the auto-zero and auto-drift corrections are subject to the same restrictions as given in the performance characteristics.

Before applying test gases to the measuring system, the test gas system shall have been operated for a sufficiently long time in order to stabilize the concentrations applied to the measuring system. The measuring system shall be tested using an impregnated particle filter.

Most measuring systems are able to display the output signal as running average of an adjustable period. Some measuring systems adjust the integration time as a function of the frequency of the fluctuations of the concentration of the measured component automatically. These options are typically used for equalisation of the output data. It does not have to be proved that the selected value for the averaging period or the use of an active filter affects the result of testing the averaging period and the response time.

The adjustments of the measuring system shall meet the specifications of the manufacturer. All settings have to be recorded in the test report.

For the determination of the various performance characteristics, suitable zero and test gases shall be used.

Parameters: During the test for each individual performance characteristic, the values of the following parameters shall be stable within the specified range given in Table 3 of standard VDI 4202-1.

Test gas: For the determination of the various performance characteristics, test gases traceable to national or international standards shall be used.

6.2 Equipment

Not required for this performance criterion.

6.3 Testing

The test was carried out using the performance criteria and requirements of VDI 4202 Part 1 (2018) and EN 14626 (2012).

6.4 Evaluation

The warm-up time described in the manual was observed.

Neither auto-scale nor self-correction functions were activated during the laboratory test.

The tests were carried out with the particle filters supplied with the systems. The entire performance test was carried out with the DFU filter (see chapter 3.4). The filter was not replaced during the field test or between the laboratory and field test.

As described in section 3.3, the adaptive filters mentioned were active by default throughout the test.

Test gases used comply with the requirements of VDI 4202-1.

6.5 Assessment

Tests were performed using the performance characteristics specified in VDI standard 4202, Part 1 (2018) and standard EN 14626 (2012)

Criterion satisfied? yes

6.6 Detailed presentation of test results

Not applicable.

6.1 7.4.3 Response time and memory effect

The response time (rise) of the measuring system shall not exceed 180 s.

The response time (fall) of the measuring system shall not exceed 180 s.

The difference between the response time (rise) and response time (fall) of the measuring system shall not exceed 10% of response time (rise) or 10 s, whatever value is larger.

6.2 Equipment

Not applicable

6.3 Testing

Determination and evaluation of the response time corresponds exactly to determining the response time in accordance with standard EN 14626 (2012). Please therefore refer to chapter 7.1 8.4.3 Response time.

6.4 Evaluation

See chapter 7.1 8.4.3 Response time

6.5 Assessment

See chapter 7.1 8.4.3 Response time

Criterion satisfied? yes

6.6 Detailed presentation of test results

Not applicable in this instance.

6.1 7.4.4 Short-term drift

*The short-term drift at zero point shall not exceed 0.1 µmol/mol.
The short-term drift at span point shall not exceed 0.60 µmol/mol.*

6.2 Equipment

Not applicable

6.3 Testing

Determination and evaluation of the short-term drift corresponds exactly to determining the short term drift in accordance with standard EN 14626 (2012). Please therefore refer to chapter 7.1 8.4.4 Short-term drift.

6.4 Evaluation

See chapter 7.1 8.4.4 Short-term drift

6.5 Assessment

See chapter 7.1 8.4.4 Short-term drift

Criterion satisfied? yes

6.6 Detailed presentation of test results

Not applicable in this instance.

6.1 7.4.5 Repeatability standard deviation

*The repeatability standard deviation at zero point shall not exceed 0.3 µmol/mol.
The repeatability standard deviation at reference point shall not exceed 0.4 µmol/mol.*

6.2 Equipment

Not applicable

6.3 Testing

Performing and evaluating the repeatability standard deviation at zero point corresponds exactly to determining the repeatability standard deviation in accordance with standard EN 14626 (2012). Please therefore refer to chapter 7.1 8.4.5 Repeatability standard deviation.

6.4 Evaluation

See chapter 7.1 8.4.5 Repeatability standard deviation.

6.5 Assessment

See chapter 7.1 8.4.5 Repeatability standard deviation.

Criterion satisfied? yes

6.6 Detailed presentation of test results

Not applicable in this instance.

6.1 7.4.6 Linearity

The analytical function describing the relationship between the measured values and the desired values shall be linear.

The deviation from the linearity of the calibration function at zero shall not exceed 0.5 µmol/mol. At concentrations above zero, it shall not exceed 4% of the measured value.

6.2 Equipment

Not applicable

6.3 Testing

Performing and evaluating the linearity corresponds exactly to determining the lack of fit in accordance with standard EN 14626 (2012). Please therefore refer to chapter 7.1 8.4.6

Lack of fit of linearity of the calibration function

6.4 Evaluation

See chapter 7.1 8.4.6 Lack of fit of linearity of the calibration function.

6.5 Assessment

See chapter 7.1 8.4.6 Lack of fit of linearity of the calibration function.

Criterion satisfied? yes

6.6 Detailed presentation of test results

Not applicable in this instance.

6.1 7.4.7 Sensitivity coefficient of sample gas pressure

The sensitivity coefficient of sample gas pressure shall not exceed 0.7 (μmol/mol)/kPA.

6.2 Equipment

Not applicable

6.3 Testing

Performing and evaluating the sensitivity coefficient of sample gas pressure corresponds exactly to determining the sensitivity coefficient to sample gas pressure in accordance with standard EN 14626 (2012). Please therefore refer to chapter 7.1 8.4.7 Sensitivity coefficient of sample gas pressure.

6.4 Evaluation

See chapter 7.1 8.4.7 Sensitivity coefficient of sample gas pressure

6.5 Assessment

See chapter 7.1 8.4.7 Sensitivity coefficient of sample gas pressure
Criterion satisfied? yes

6.6 Detailed presentation of test results

Not applicable in this instance.

6.1 7.4.8 Sensitivity coefficient of sample gas temperature

The sensitivity coefficient of sample gas temperature shall not exceed 0.3 (μmol/mol)/kPA.

6.2 Equipment

Not applicable

6.3 Testing

Performing and evaluating the sensitivity coefficient of sample gas temperature corresponds exactly to determining the sensitivity coefficient of sample gas temperature in accordance with standard EN 14626 (2012). Please therefore refer to chapter 7.1 8.4.8 Sensitivity coefficient of sample gas temperature.

6.4 Evaluation

See chapter 7.1 8.4.8 Sensitivity coefficient of sample gas temperature

6.5 Assessment

See chapter 7.1 8.4.8 Sensitivity coefficient of sample gas temperature

Criterion satisfied? yes

6.6 Detailed presentation of test results

Not applicable in this instance.

6.1 7.4.9 Sensitivity coefficient of surrounding temperature

The sensitivity coefficient of surrounding temperature shall not exceed 0.3 (μmol/mol)/kPA.

6.2 Equipment

Not applicable

6.3 Testing

Performing and evaluating the sensitivity coefficient of surrounding temperature corresponds exactly to determining the sensitivity coefficient of the surrounding temperature in accordance with standard EN 14626 (2012). Please therefore refer to chapter 7.1 8.4.9 Sensitivity coefficient of surrounding temperature.

6.4 Evaluation

See chapter 7.1 8.4.9 Sensitivity coefficient of surrounding temperature

6.5 Assessment

See chapter 7.1 8.4.9 Sensitivity coefficient of surrounding temperature
Criterion satisfied? yes

6.6 Detailed presentation of test results

Not applicable in this instance.

6.1 7.4.10 Sensitivity coefficient of electrical voltage

The sensitivity coefficient of electrical voltage shall not exceed 0.3 (μmol/mol)/V.

6.2 Equipment

Not applicable

6.3 Testing

Performing and evaluating the sensitivity coefficient of electrical voltage corresponds exactly to determining the sensitivity coefficient of electrical voltage in accordance with standard EN 14626 (2012). Please therefore refer to chapter 7.1 8.4.10 Sensitivity coefficient of electrical voltage.

6.4 Evaluation

See chapter 7.1 8.4.10 Sensitivity coefficient of electrical voltage

6.5 Assessment

See chapter 7.1 8.4.10 Sensitivity coefficient of electrical voltage

Criterion satisfied? yes

6.6 Detailed presentation of test results

Not applicable in this instance.

6.1 7.4.11 Cross-sensitivity

The change in the measured value caused by interfering components in the sample gas shall not exceed the requirements of Table A of VDI 4202, part 1 (April 2018), at zero and span point.

For measuring principles deviating from EN standards the absolute values of the sum of the positive and the sum of negative deviations caused by interfering components in the sample gas shall not exceed 3% of the upper limit of the certification range at zero and reference point. A value c_t at 70% to 80% of the upper limit of the certification range shall be used as reference point.

6.2 Equipment

Not applicable.

6.3 Testing

Performing and evaluating cross sensitivity corresponds exactly to determining interferences in accordance with standard EN 14626 (2012). Please therefore refer to chapter 7.1 8.4.11 Interferences.

6.4 Evaluation

See chapter 7.1 8.4.11 Interferences

6.5 Assessment

See chapter 7.1 8.4.11 Interferences

Criterion satisfied? yes

6.6 Detailed presentation of test results

Not applicable in this instance.

6.1 7.4.12 Averaging effect

The measuring system shall enable hourly averages.

The averaging effect shall not exceed 7% of the measured value.

6.2 Equipment

Not applicable

6.3 Testing

Determination and evaluation of the averaging effect corresponds exactly to determining the averaging test in accordance with standard EN 14626 (2012). Please therefore refer to chapter 7.1 8.4.12 Averaging test.

6.4 Evaluation

See chapter 7.1 8.4.12 Averaging test

6.5 Assessment

See chapter 7.1 8.4.12 Averaging test

Criterion satisfied? yes

6.6 Detailed presentation of test results

Not applicable in this instance.

6.1 7.4.13 Difference between sample and calibration port

If a measuring system, standardly or optionally, possesses a test gas inlet separated from the sample gas inlet, this configuration shall be tested.

The difference between the measured values obtained by feeding gas at the sample gas and test gas inlet shall not exceed 1 %.

6.2 Equipment

Not applicable.

6.3 Testing

Determination and evaluation of the difference between sample and calibration port corresponds exactly to determining the difference sample/calibration port in accordance with standard EN 14626 (2012). Please therefore refer to chapter 7.1 8.4.13 Difference sample/calibration port.

6.4 Evaluation

See chapter 7.1 8.4.13 Difference sample/calibration port

6.5 Assessment

See chapter 7.1 8.4.13 Difference sample/calibration port
Criterion satisfied? yes

6.6 Detailed presentation of test results

Not applicable in this instance.

6.1 **7.4.14 Converter efficiency**

In case of measuring systems with a converter, the converter efficiency shall be at least 98 % in the laboratory test.

6.2 **Equipment**

Not applicable.

6.3 **Testing**

The tested measuring system does not use a converter.

6.4 **Evaluation**

Not applicable.

6.5 **Assessment**

Not applicable as the measuring system does not use a converter.

Criterion satisfied? Not applicable

6.6 **Detailed presentation of test results**

Not applicable in this instance.

6.1 7.4.15 Residence time in the analyser

If the residence time has influence on the output signal, like for NO_x and ozone measuring systems, it is necessary to calculate the residence time from the volume flow and the volume of the gas lines and other relevant components of the measuring system and the particle filter casing.

In the case of NO_x and O₃ measurements, the residence time shall not exceed 3 s.

6.2 Equipment

Not applicable.

6.3 Testing

The instrument tested here is not an NO_x or ozone measuring system. Thus, this criterion does not apply.

6.4 Evaluation

Not applicable.

6.5 Assessment

As the measuring instrument does not measure NO_x or ozone, this test criterion does not apply.

Criterion satisfied? not applicable

6.6 Detailed presentation of test results

Not applicable in this instance.

6.1 7.5 Requirements on performance characteristics for testing in the field

6.1 7.5.1 General requirements

The performance characteristics which shall be determined during testing in the field and their related performance criteria for measured components according to 39. BImSchV are given in Table A1 of VDI 4202-1 (2018).

The certification range for other components is to be defined. Performance criteria are to be defined by drawing from Table A1 of VDI 4202-1 (2018). These definitions shall be cleared with the relevant body before testing.

The determination of the performance characteristics shall be done according to the procedures described in Section 8.5 of VDI 4202-1 (2018).

6.2 Equipment

Not required for this performance criterion.

6.3 Testing

The test was carried out using the performance criteria and requirements of VDI 4202 Part 1 (2018) and EN 14626 (2012).

6.4 Evaluation

Not applicable.

6.5 Assessment

Tests were performed using the performance characteristics specified in VDI standard 4202, Part 1 (2018) and standard EN 14626 (2012)

Criterion satisfied? yes

6.6 Detailed presentation of test results

Not applicable.

6.1 7.5.2 Location for the field test

The monitoring station for the field test is to be chosen according to the requirements of 39th BImSchV such that the expected concentrations of the measured components to be measured correspond to the designated task. The equipment of the monitoring station shall allow the implementation of the field test and shall fulfil all requirements considered to be necessary during measurement planning.

6.2 Equipment

Not required for this performance criterion.

6.3 Testing

The field test location was selected in compliance with the 39th BImSchV.

6.4 Evaluation

The field test location was selected in compliance with the 39th BImSchV. Details on the location of the measuring station are given in chapter 4.3.

6.5 Assessment

The field test location was selected in compliance with the 39th BImSchV.

Criterion satisfied? yes

6.6 Detailed presentation of test results

Not applicable.

6.1 7.5.3 Test requirements

The measuring systems shall be installed in the monitoring station and, after connecting to the existing or separate sampling system, activated properly.

The adjustments of the measuring system shall meet the specifications of the manufacturer. All settings have to be recorded in the test report.

The measuring systems shall be maintained during the field test, following the manufacturer's specifications, and shall be checked with suitable test gases regularly.

If the instrument has an auto-scaling or self-correction function and it is regarded as a "normal operating condition", it shall be operational during the field test. The magnitude of the self-correction has to be available to the testing laboratory. The values of the auto-zero and auto-drift corrections for the inspection interval (long-term drift) are subject to the same restrictions as given in the performance characteristics.

6.2 Equipment

Not required for this performance criterion.

6.3 Testing

For the purpose of field testing, the measuring system was mounted in a measuring station and connected to the existing sampling system. The measuring system was then commissioned following the manufacturer's instructions in the manual.

Neither self-correction nor auto-zero functions were activated during the field test.

6.4 Evaluation

During the field test, the measuring system was operated and serviced according to the manufacturer's instructions. Neither self-correction nor auto-zero functions were activated.

6.5 Assessment

During the field test, the measuring system was operated and serviced according to the manufacturer's instructions.

Criterion satisfied? yes

6.6 Detailed presentation of test results

Not applicable.

6.1 7.5.4 Long-term drift

The long-term drift at zero point shall not exceed 0.5 µmol/mol.

The long-term drift at reference point shall not exceed 5 % of the upper limit of the certification range.

6.2 Equipment

Not applicable

6.3 Testing

Determination and evaluation of the long-term drift corresponds exactly to determining the long term drift in accordance with standard EN 14626 (2012). Please therefore refer to chapter 7.1 8.5.4 Long-term drift.

6.4 Evaluation

See chapter 7.1 8.5.4 Long-term drift.

6.5 Assessment

See chapter 7.1 8.5.4 Long-term drift.

Criterion satisfied? yes

6.6 Detailed presentation of test results

Not applicable in this instance.

6.1 7.5.5 Reproducibility standard deviation under field conditions

The standard deviation from paired measurements under field conditions shall be determined with two identical measuring systems by paired measurements in the field test.

The standard deviation under field conditions shall not exceed 5% of the mean value over a period of three months.

6.2 Equipment

Not applicable.

6.3 Testing

Performing and evaluating the standard deviation from paired measurements corresponds exactly to determining the reproducibility standard deviation in accordance with standard EN 14626 (2012). Please therefore refer to chapter 7.1 8.5.5 Reproducibility standard deviation for CO under field conditions.

6.4 Evaluation

See chapter 7.1 8.5.5 Reproducibility standard deviation for CO under field conditions.

6.5 Assessment

See chapter 7.1 8.5.5 Reproducibility standard deviation for CO under field conditions.

Criterion satisfied? yes

6.6 Detailed presentation of test results

Not applicable in this instance.

6.1 7.5.6 Inspection interval

The inspection interval of the measuring system shall be determined during the field test and specified. The maintenance interval should be three months, if possible, but at least two weeks.

6.2 Equipment

Not required for this performance criterion.

6.3 Testing

Performing and evaluating the inspection interval corresponds exactly to determining the period of unattended operation in accordance with standard EN 14626 (2012). Please therefore refer to chapter 7.1 8.5.6 Inspection interval.

6.4 Evaluation

See chapter 7.1 8.5.6 Inspection interval.

6.5 Assessment

See chapter 7.1 8.5.6 Inspection interval.

Criterion satisfied? yes

6.6 Detailed presentation of test results

Not applicable in this instance.

6.1 7.5.7 Availability

The availability of the measuring system shall be determined during the field test and shall be at least 95%.

6.2 Equipment

Not applicable.

6.3 Testing

Determination and evaluation of the availability corresponds exactly to determining the period of availability of the analyser in accordance with standard EN 14626 (2012). Please therefore refer to chapter 7.1 8.5.7 Period of availability of the analyser.

6.4 Evaluation

See chapter 7.1 8.5.7 Period of availability of the analyser.

6.5 Assessment

See chapter 7.1 8.5.7 Period of availability of the analyser.

Criterion satisfied? yes

6.6 Detailed presentation of test results

Not applicable in this instance.

6.1 7.5.8 Converter efficiency

At the end of the field test, the converter efficiency shall be at least 95 %.

6.2 Equipment

Not applicable.

6.3 Testing

The tested measuring system does not use a converter.

6.4 Evaluation

Not applicable.

6.5 Assessment

Not applicable as the measuring system does not use a converter.

Criterion satisfied? not applicable

6.6 Detailed presentation of test results

Not applicable in this instance.

6.1 7.6 Type approval and calculation of the measurement uncertainty

The type approval of the measuring system requires the following:

- 1) The value of each individual performance characteristic tested in the laboratory shall fulfil the criterion stated in Table A1 of VDI 4202-1 (2018).*
- 2) The expanded uncertainty calculated from the standard uncertainties due to the values of the specific performance characteristics obtained in the laboratory tests shall fulfil the criterion as stated in Table C1 of VDI 4202-1 (2018). This criterion is the maximum uncertainty of individual measurements for continuous measurements at the 1-hour limit value. The relevant specific performance characteristics and the calculation procedure are given in Annex F of standard VDI 4202-1 (2018).*
- 3) The value of each individual performance characteristic tested in the laboratory shall fulfil the criterion stated in Table A1 of VDI 4202-1 (2018).*
- 4) The expanded uncertainty calculated from the standard uncertainties due to the values of the specific performance characteristics obtained in the laboratory and field tests shall fulfil the criterion as stated in Table C1 of VDI 4202-1 (2018). This criterion is the maximum uncertainty of individual measurements for continuous measurements at the 8-hour limit value. The relevant specific performance characteristics and the calculation procedure are given in Annex F of standard VDI 4202-1 (2018).*

6.2 Equipment

Not applicable.

6.3 Testing

The uncertainty calculation was performed in line with standard EN 14626 (2012) and is presented in 7.1 8.6 Calculation of the total uncertainty in accordance with standard EN 14626 (2012) according to Annex E of EN 14626 (2012)

6.4 Evaluation

The uncertainty calculation was performed in line with standard EN 14626 (2012) and is presented in 7.1 8.6 Calculation of the total uncertainty in accordance with standard EN 14626 (2012) according to Annex E of EN 14626 (2012)

6.5 Assessment

The uncertainty calculation was performed in line with standard EN 14626 (2012) and is presented in 7.1 8.6 Calculation of the total uncertainty in accordance with standard EN 14626 (2012) according to Annex E of EN 14626 (2012)

Criterion satisfied? yes

6.6 Detailed presentation of test results

Not applicable in this instance.

7. Test results in accordance with standard EN 14626 (2012)

7.1 8.4.3 Response time

Rise and fall response time ≤ 180 s each. Difference between rise and fall response time ≤ 10 s.

7.2 Testing

The determination of the response time shall be carried out by applying to the analyser a step function in the applied concentration from less than 20 % to about 80 % of the maximum of the certification range and vice versa.

The change from zero gas to span gas and vice versa needs to be made almost instantaneously, with the use of a suitable valve. The valve outlet must be mounted directly at the inlet of the meter and both zero and span gas must be supplied with the same excess, which is discharged by means of a T-piece. The gas flows of zero and span gas must be selected in such a way that the dead time in the valve and in the T-piece is negligible compared to the dead time of the meter. The step change is made by switching the valve from zero gas to span gas. This event needs to be timed and is the start ($t = 0$) of the (rise) lag time for the dead time (rise) as shown in Figure 12. When the reading shows 98% of the applied concentration, the span gas can be changed to zero gas again; this event is the start ($t = 0$) of the (fall) lag time. When the reading shows 2% of the applied concentration, the whole cycle as shown in Figure 12 is complete.

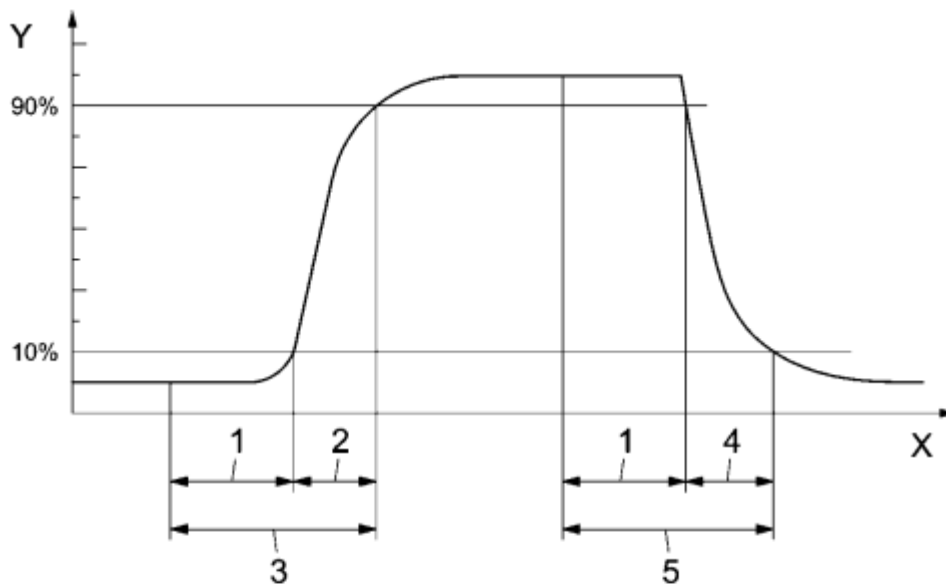
The elapsed time (response time) between the start of the step change and reaching 90% of the analyser final stable reading of the applied concentration shall be measured. The whole cycle shall be repeated four times. The average of the four response times (rise) and the average of the four response times (fall) are calculated.

The difference in response times shall be calculated according to: Where:

$$t_d = \bar{t}_r - \bar{t}_f$$

Where T_d is the difference between response time (rise) and response time (fall), in s;
 t_r is the response time (rise) (average of the four response times - rise), in s;
 t_f is the response time (fall) (average of the four response times - fall), in s.

t_r , t_f and t_d shall comply with the performance criteria indicated above.



Key

- Y analyser response
- X time
- 1 lag time
- 2 rise time
- 3 response time (rise)
- 4 fall time
- 5 response time (fall)

Figure 12: Diagram illustrating the response time

7.3 Testing

The test was performed in line with the requirements of EN 14626 mentioned previously. An external data logger was used to record data.

7.4 Evaluation

Table 4: Response times of the two N300 measuring systems for carbon monoxide

| | requirement | device 1 | | device 2 | |
|------------------------|--------------|----------|---|----------|---|
| average rise t_r [s] | ≤ 180 s | 42 | ✓ | 40 | ✓ |
| average fall t_f [s] | ≤ 180 s | 41 | ✓ | 41 | ✓ |
| difference t_d [s] | ≤ 10 s | 1.0 | ✓ | -1.0 | ✓ |

For carbon monoxide, system 1, the maximum t_r was 42 s, the maximum t_f was 41 s and t_d 1 s.

For carbon monoxide, system 2, the maximum t_r was 40 s, the maximum t_f was 41 s and t_d -1 s.

7.5 Assessment

The values determined remained considerably below the maximum permissible response time of 180 s at all times. The maximum determined response time for system 1 was 42 sec. For system 2 it was 41 sec.

Criterion satisfied? yes

7.6 Detailed presentation of test results

Table 5: Individual results of the response time for carbon monoxide

| 80% | | device 1 | | | | | |
|-----------------|-------------|-------------|--------------|--------------|--------------|-------------|-------------|
| measuring range | 68.97 | rise | | | fall | | |
| | | 0.0 0.00 | 0.9 62.07 | 1.0 68.97 | 1.0 68.97 | 0.1 6.90 | 0.0 0.00 |
| cycle 1 | t = 0 | 11:01:00 | 11:01:43 | 11:02:00 | 11:07:00 | 11:07:39 | 11:08:00 |
| | delta t | | 00:00:43 | | | 00:00:39 | |
| | delta t [s] | | 43 | | | 39 | |
| cycle 2 | t = 0 | 11:13:00 | 11:13:41 | 11:14:00 | 11:19:00 | 11:19:40 | 11:20:00 |
| | delta t | | 00:00:41 | | | 00:00:40 | |
| | delta t [s] | | 41 | | | 40 | |
| cycle 3 | t = 0 | 11:25:00 | 11:25:42 | 11:26:00 | 11:31:00 | 11:31:43 | 11:32:00 |
| | delta t | | 00:00:42 | | | 00:00:43 | |
| | delta t [s] | | 42 | | | 43 | |
| cycle 4 | t = 0 | 11:37:00 | 11:37:42 | 11:38:00 | 11:43:00 | 11:43:42 | 11:44:00 |
| | delta t | | 00:00:42 | | | 00:00:42 | |
| | delta t [s] | | 42 | | | 42 | |

| 80% | | device 2 | | | | | |
|-----------------|-------------|-------------|--------------|--------------|--------------|-------------|-------------|
| measuring range | 68.97 | rise | | | fall | | |
| | | 0.0 0.00 | 0.9 62.07 | 1.0 68.97 | 1.0 68.97 | 0.1 6.90 | 0.0 0.00 |
| cycle 1 | t = 0 | 11:01:00 | 11:01:40 | 11:02:00 | 11:07:00 | 11:07:41 | 11:08:00 |
| | delta t | | 00:00:40 | | | 00:00:41 | |
| | delta t [s] | | 40 | | | 41 | |
| cycle 2 | t = 0 | 11:13:00 | 11:13:42 | 11:14:00 | 11:19:00 | 11:19:40 | 11:20:00 |
| | delta t | | 00:00:42 | | | 00:00:40 | |
| | delta t [s] | | 42 | | | 40 | |
| cycle 3 | t = 0 | 11:25:00 | 11:25:40 | 11:26:00 | 11:31:00 | 11:31:42 | 11:32:00 |
| | delta t | | 00:00:40 | | | 00:00:42 | |
| | delta t [s] | | 40 | | | 42 | |
| cycle 4 | t = 0 | 11:37:00 | 11:37:38 | 11:38:00 | 11:43:00 | 11:43:41 | 11:44:00 |
| | delta t | | 00:00:38 | | | 00:00:41 | |
| | delta t [s] | | 38 | | | 41 | |

7.1 8.4.4 Short-term drift

Short-term drift at zero shall not exceed 0.1 µmol/mol/12 h.

The short-term drift at reference level shall not exceed 0.60 µmol/mol/12 h.

7.2 Testing

After the required stabilisation period, the analyser shall be adjusted at zero and span level (around 70% to 80% of the maximum of the certification range). Wait the time equivalent to one independent reading and then record 20 individual measurements, first at zero and then at span concentration. From these 20 measurements, the average is calculated for zero and span level.

The analyser shall be kept running under the laboratory conditions. After a period of 12 h, zero and span gas is fed to the analyser. Wait the time equivalent to one independent reading and then record 20 individual measurements, first at zero and then at span concentration. The averages for zero and span level shall be calculated.

The short-term drift at zero and span level shall be calculated as follows:

$$D_{s,z} = (C_{z,2} - C_{z,1})$$

Where:

$D_{s,z}$ is the 12-hour drift at zero;

$C_{z,1}$ is the average concentration of the measurements at zero at the beginning of the drift period;

$C_{z,2}$ is the average concentration of the measurements at zero at the end of the drift period;

$D_{s,z}$ shall comply with the performance criterion indicated above.

$$D_{s,s} = (C_{s,2} - C_{s,1}) - D_{s,z}$$

Where:

$D_{s,s}$ is the 12-hour drift at span;

$C_{s,1}$ is the average concentration of the measurements at span level at the beginning of the drift period;

$C_{s,2}$ is the average concentration of the measurements at span level at the end of the drift period.

$D_{s,s}$ shall comply with the performance criterion indicated above.

7.3 Testing

The test was performed in line with the requirements of EN 14626 mentioned previously. Pursuant to EN 14626, the test shall be performed at a concentration level of 70% to 80% of the certification range for carbon monoxide.

7.4 Evaluation

Table 6 shows the measured values determined for the short-term drift.

Table 6: Results for the short-term drift

| | requirements | device 1 | | device 2 | |
|--|--------------|----------|---|----------|---|
| average at zero at the beginning [$\mu\text{mol/mol}$] | - | 0.00 | | 0.05 | |
| average at zero at the end (12h) [$\mu\text{mol/mol}$] | - | 0.05 | | 0.05 | |
| average at span at the beginning [$\mu\text{mol/mol}$] | - | 64.44 | | 63.55 | |
| average at span at the end (12h) [$\mu\text{mol/mol}$] | - | 64.66 | | 63.87 | |
| 12-hour drift at zero $D_{s,z}$ [$\mu\text{mol/mol}$] | $\leq 0,1$ | 0.05 | ✓ | 0.00 | ✓ |
| 12-hour drift at span $D_{s,s}$ [$\mu\text{mol/mol}$] | $\leq 0,6$ | 0.17 | ✓ | 0.31 | ✓ |

7.5 Assessment

For instrument 1 the value for the short-term drift at zero point was 0.05 $\mu\text{mol/mol}$. For instrument 2 it was 0.00 $\mu\text{mol/mol}$.

For instrument 1 the value for the short-term drift at span point was 0.17 $\mu\text{mol/mol}$. For instrument 2 it was 0.31 $\mu\text{mol/mol}$.

Criterion satisfied? yes

7.6 Detailed presentation of test results

Table 7 and Table 8 present the individual test results.

Table 7: Individual results for short-term drift 1st test gas

| at beginning | | |
|----------------|-------------------------|-------------------------|
| zero level | | |
| 24.03.2022 | device 1 | device 2 |
| time | [$\mu\text{mol/mol}$] | [$\mu\text{mol/mol}$] |
| 15:20:00 | 0.00 | 0.05 |
| 15:21:00 | 0.00 | 0.05 |
| 15:22:00 | 0.00 | 0.05 |
| 15:23:00 | 0.05 | 0.05 |
| 15:24:00 | 0.00 | 0.05 |
| 15:25:00 | 0.00 | 0.05 |
| 15:26:00 | 0.00 | 0.05 |
| 15:27:00 | 0.00 | 0.05 |
| 15:28:00 | 0.00 | 0.05 |
| 15:29:00 | 0.00 | 0.05 |
| 15:30:00 | 0.00 | 0.05 |
| 15:31:00 | 0.00 | 0.05 |
| 15:32:00 | 0.00 | 0.05 |
| 15:33:00 | 0.00 | 0.05 |
| 15:34:00 | 0.00 | 0.05 |
| 15:35:00 | 0.00 | 0.05 |
| 15:36:00 | 0.00 | 0.05 |
| 15:37:00 | 0.00 | 0.05 |
| 15:38:00 | 0.00 | 0.05 |
| 15:39:00 | 0.00 | 0.05 |
| average | 0.00 | 0.05 |

| at beginning | | |
|----------------|-------------------------|-------------------------|
| span level | | |
| 24.03.2022 | device 1 | device 2 |
| time | [$\mu\text{mol/mol}$] | [$\mu\text{mol/mol}$] |
| 15:50:00 | 64.55 | 63.53 |
| 15:51:00 | 64.55 | 63.53 |
| 15:52:00 | 64.55 | 63.53 |
| 15:53:00 | 64.45 | 63.53 |
| 15:54:00 | 64.39 | 63.53 |
| 15:55:00 | 64.39 | 63.59 |
| 15:56:00 | 64.45 | 63.59 |
| 15:57:00 | 64.45 | 63.59 |
| 15:58:00 | 64.45 | 63.59 |
| 15:59:00 | 64.45 | 63.59 |
| 16:00:00 | 64.45 | 63.59 |
| 16:01:00 | 64.45 | 63.59 |
| 16:02:00 | 64.45 | 63.59 |
| 16:03:00 | 64.39 | 63.53 |
| 16:04:00 | 64.39 | 63.53 |
| 16:05:00 | 64.39 | 63.53 |
| 16:06:00 | 64.39 | 63.53 |
| 16:07:00 | 64.39 | 63.53 |
| 16:08:00 | 64.39 | 63.53 |
| 16:09:00 | 64.39 | 63.53 |
| average | 64.44 | 63.55 |

Table 8: Individual results for short-term drift 2nd test gas

| after 12h | | |
|----------------|-------------------------|-------------------------|
| zero level | | |
| 25.03.2022 | device 1 | device 2 |
| time | [$\mu\text{mol/mol}$] | [$\mu\text{mol/mol}$] |
| 03:20:00 | 0.05 | 0.05 |
| 03:21:00 | 0.05 | 0.05 |
| 03:22:00 | 0.05 | 0.05 |
| 03:23:00 | 0.05 | 0.05 |
| 03:24:00 | 0.05 | 0.05 |
| 03:25:00 | 0.05 | 0.05 |
| 03:26:00 | 0.05 | 0.05 |
| 03:27:00 | 0.05 | 0.05 |
| 03:28:00 | 0.05 | 0.05 |
| 03:29:00 | 0.05 | 0.05 |
| 03:30:00 | 0.05 | 0.05 |
| 03:31:00 | 0.05 | 0.05 |
| 03:32:00 | 0.05 | 0.05 |
| 03:33:00 | 0.05 | 0.05 |
| 03:34:00 | 0.05 | 0.05 |
| 03:35:00 | 0.05 | 0.05 |
| 03:36:00 | 0.05 | 0.05 |
| 03:37:00 | 0.05 | 0.05 |
| 03:38:00 | 0.05 | 0.05 |
| 03:39:00 | 0.05 | 0.05 |
| average | 0.05 | 0.05 |

| after 12h | | |
|----------------|-------------------------|-------------------------|
| span level | | |
| 25.03.2022 | device 1 | device 2 |
| time | [$\mu\text{mol/mol}$] | [$\mu\text{mol/mol}$] |
| 03:50:00 | 64.55 | 63.86 |
| 03:51:00 | 64.55 | 63.86 |
| 03:52:00 | 64.61 | 63.86 |
| 03:53:00 | 64.66 | 63.80 |
| 03:54:00 | 64.66 | 63.80 |
| 03:55:00 | 64.66 | 63.86 |
| 03:56:00 | 64.66 | 63.86 |
| 03:57:00 | 64.72 | 63.91 |
| 03:58:00 | 64.72 | 63.91 |
| 03:59:00 | 64.72 | 63.91 |
| 04:00:00 | 64.72 | 63.91 |
| 04:01:00 | 64.72 | 63.91 |
| 04:02:00 | 64.72 | 63.86 |
| 04:03:00 | 64.66 | 63.86 |
| 04:04:00 | 64.66 | 63.86 |
| 04:05:00 | 64.61 | 63.86 |
| 04:06:00 | 64.66 | 63.86 |
| 04:07:00 | 64.66 | 63.86 |
| 04:08:00 | 64.72 | 63.86 |
| 04:09:00 | 64.61 | 63.91 |
| average | 64.66 | 63.87 |

7.1 8.4.5 Repeatability standard deviation

The performance criteria are as follows: Repeatability standard deviation at zero shall not exceed 0.3 µmol/mol. At a sample gas concentration at the span point it shall not exceed 0.4 µmol/mol.

7.2 Test procedure

After waiting the time equivalent of one independent reading, 20 individual measurements both at zero concentration and at a test gas concentration (c_t) similar to the 8-hour-limit shall be performed.

From these measurements, the repeatability standard deviation (s_r) at zero concentration and at concentration c_t shall be calculated according to:

$$s_r = \sqrt{\frac{\sum (x_i - \bar{x})^2}{n - 1}}$$

Where:

- s_r the repeatability standard deviation;
- x_i the i th measurement;
- \bar{x} is the average of the 20 measurements;
- n is the number of measurements.

The repeatability standard deviation shall be calculated separately for both series of measurements (zero gas and concentration c_t).

s_r shall comply with the performance criterion indicated above, both at zero and at the test gas concentration c_t (8-hour-limit value).

The detection limit of the measuring system is calculated from the repeatability standard deviation and the slope of the calibration function determined in accordance with Chapter 8.4.6 according to the following equation:

$$l_{\text{det}} = 3,3 \cdot \frac{s_{r,z}}{B}$$

Where:

- l_{det} is the detection limit of the measuring system, in µmol/mol;
- $s_{r,z}$ is the repeatability standard deviation at zero, in µmol/mol;
- B is the slope of the calibration function according to Annex A based on the data from 8.4.6.

7.3 Testing

The test was performed in line with the requirements of EN 14626 mentioned previously. Pursuant to EN 14626, the test shall be performed at a concentration level of ca. 8.6 µmol/mol CO.

7.4 Evaluation

Table 9 presents the results for the repeatability standard deviation.

Table 9: Repeatability standard deviation at zero and span point

| | requirement | device 1 | | device 2 | |
|---|-------------|----------|---|----------|---|
| repeatability standard deviation $s_{r,z}$ at zero [µmol/mol] | ≤ 0,3 | 0.03 | ✓ | 0.03 | ✓ |
| repeatability standard deviation $s_{r,ct}$ at c_t [µmol/mol] | ≤ 0,4 | 0.05 | ✓ | 0.05 | ✓ |
| detection limit [µmol/mol] | | 0.11 | | 0.09 | |

7.5 Assessment

For instrument 1 the value for the repeatability standard deviation at zero point was 0.03 µmol/mol. For instrument 2 it was 0.03 µmol/mol. Repeatability standard deviation at span point was 0.05 µmol/mol for instrument 1 and 0.05 µmol/mol for instrument 2.

Criterion satisfied? yes

7.6 Detailed presentation of test results

Table 10 lists the results of individual measurements.

Table 10: Individual results for repeatability standard deviation

| zero level | | |
|------------|-------------------------|-------------------------|
| | device 1 | device 2 |
| time | [$\mu\text{mol/mol}$] | [$\mu\text{mol/mol}$] |
| 13:24:00 | 0.00 | 0.00 |
| 13:25:00 | -0.05 | 0.00 |
| 13:26:00 | -0.05 | 0.00 |
| 13:27:00 | -0.05 | 0.00 |
| 13:28:00 | -0.05 | 0.00 |
| 13:29:00 | 0.00 | 0.00 |
| 13:30:00 | 0.00 | 0.00 |
| 13:31:00 | 0.00 | 0.00 |
| 13:32:00 | 0.00 | 0.00 |
| 13:33:00 | 0.00 | 0.00 |
| 13:34:00 | 0.00 | 0.00 |
| 13:35:00 | 0.00 | -0.05 |
| 13:36:00 | 0.00 | -0.05 |
| 13:37:00 | 0.00 | -0.05 |
| 13:38:00 | 0.00 | -0.05 |
| 13:39:00 | 0.05 | -0.05 |
| 13:40:00 | 0.05 | -0.05 |
| 13:41:00 | 0.05 | -0.05 |
| 13:42:00 | 0.05 | -0.05 |
| 13:43:00 | 0.00 | -0.05 |
| average | 0.00 | -0.02 |

| c _t level | | |
|----------------------|-------------------------|-------------------------|
| | device 1 | device 2 |
| time | [$\mu\text{mol/mol}$] | [$\mu\text{mol/mol}$] |
| 13:49:00 | 8.55 | 8.82 |
| 13:50:00 | 8.55 | 8.82 |
| 13:51:00 | 8.55 | 8.82 |
| 13:52:00 | 8.55 | 8.87 |
| 13:53:00 | 8.55 | 8.82 |
| 13:54:00 | 8.60 | 8.87 |
| 13:55:00 | 8.65 | 8.92 |
| 13:56:00 | 8.65 | 8.92 |
| 13:57:00 | 8.65 | 8.92 |
| 13:58:00 | 8.65 | 8.92 |
| 13:59:00 | 8.65 | 8.92 |
| 14:00:00 | 8.65 | 8.92 |
| 14:01:00 | 8.65 | 8.92 |
| 14:02:00 | 8.65 | 8.98 |
| 14:03:00 | 8.65 | 8.92 |
| 14:04:00 | 8.65 | 8.92 |
| 14:05:00 | 8.65 | 8.92 |
| 14:06:00 | 8.65 | 8.92 |
| 14:07:00 | 8.65 | 8.92 |
| 14:08:00 | 8.65 | 8.92 |
| average | 8.62 | 8.90 |

7.1 8.4.6 Lack of fit of linearity of the calibration function

The deviation from the linearity of the calibration function at zero shall not exceed 0.5 µmol/mol. At concentrations above zero, it shall not exceed 4% of the measured value.

7.2 Test procedure

The lack-of-fit of linearity of the calibration function of the analyser shall be tested over the range of 0% to 95% of the maximum of the certification range, using at least six concentrations (including the zero point). The analyser shall be adjusted at a concentration of about 90% of the maximum of the certification range. At each concentration (including zero) at least five individual measurements shall be performed.

The concentrations shall be applied in the following sequence: 80%, 40%, 0%, 60%, 20% and 95%. After each change in concentration, at least four response times shall be taken into account before the next measurement is performed.

The regression function and the deviations are calculated in accordance with Annex A of standard EN 14626. The deviations from the linear regression function shall comply with the performance criterion specified above.

Establishment of the regression line:

A linear regression function in the form of $Y_i = A + B * X_i$ is made through calculation of the following formula:

$$Y_i = a + B(X_i - X_z)$$

For the regression calculation, all measuring points (including zero) are taken into account. The total number of measuring points is equal to the number of concentration levels (at least six including zero) times the number of repetitions (at least five) at a particular concentration level.

The coefficient a is obtained from:

$$a = \sum Y_i / n$$

Where:

- a is the average value of the Y-values;
- Y_i is the individual Y-value;
- N is the number of measuring points.

The coefficient B is obtained from:

$$B = \left(\sum Y_i (X_i - X_z) \right) / \sum (X_i - X_z)^2$$

Where:

- X_z is the average of the x-values $\left(= \sum (X_i / n) \right)$
- X_i is the individual x-value.

The function $Y_i = a + B (X_i - X_z)$ is converted via the calculation of A into $Y_i = A + B * X_i$

$$A = a - B * X_z$$

The residuals of the averages of each calibration point (including the zero point) are calculated as follows.

The average of each calibration point (including the zero point) at one and the same concentration c is calculated according to:

$$(Y_a)_c = \sum (Y_i)_c / m$$

Where:

$(Y_a)_c$ is the average y-value at concentration level c;

$(Y_i)_c$ is the individual y-value at concentration level c;

M is the number of repetitions at one and the same concentration level c;

The residual of each average (r_c) at each concentration level is calculated according to:

$$r_c = (Y_a)_c - (A + B \times c)$$

Each residual to a value relative to its own concentration level c is expressed in % as:

$$r_{c,rel} = \frac{r_c}{c} \times 100\%$$

7.3 Testing

The test was performed in line with the requirements of EN 14626 mentioned previously.

7.4 Evaluation

The following linear regressions were established:

Figure 13 and Figure 14 summarise the results of the group averages for carbon monoxide.

Table 11: Analytical function variations for carbon monoxide

| | requirements | device 1 | | device 2 | |
|---|--------------|----------|---|----------|---|
| largest value of the relative residuals r_{max} [%] | $\leq 4,0$ | 2.25 | ✓ | 2.21 | ✓ |
| residual at zero r_z [$\mu\text{mol/mol}$] | $\leq 0,5$ | -0.01 | ✓ | 0.16 | ✓ |

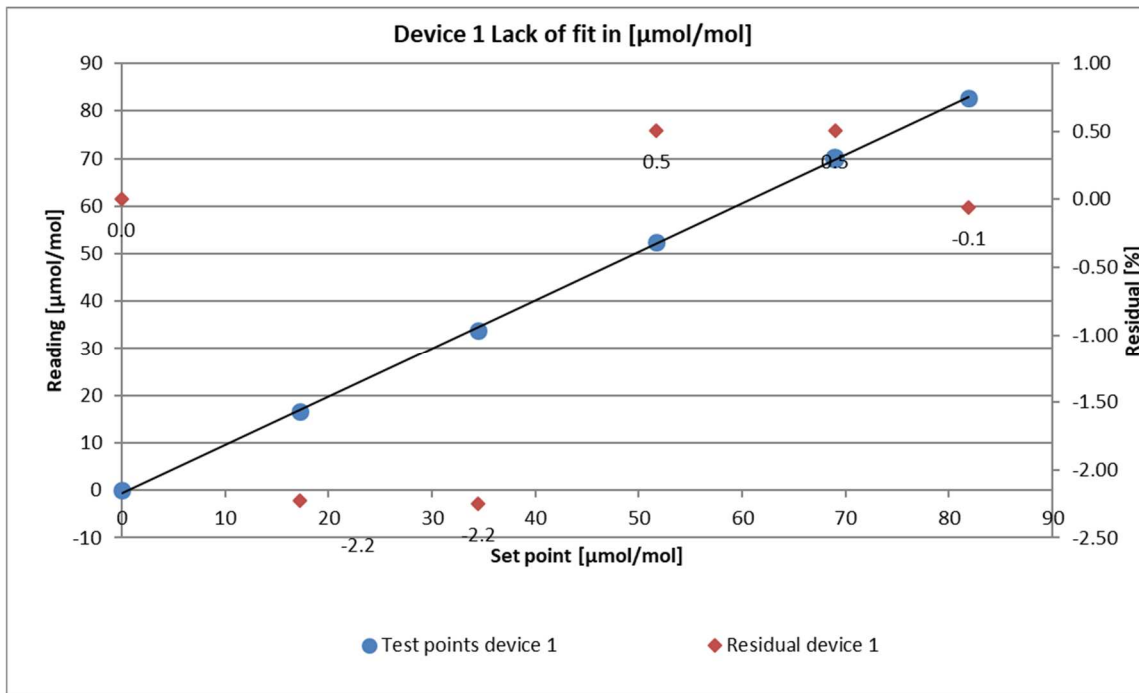


Figure 13: Lack of fit results obtained from the group averages for system 1

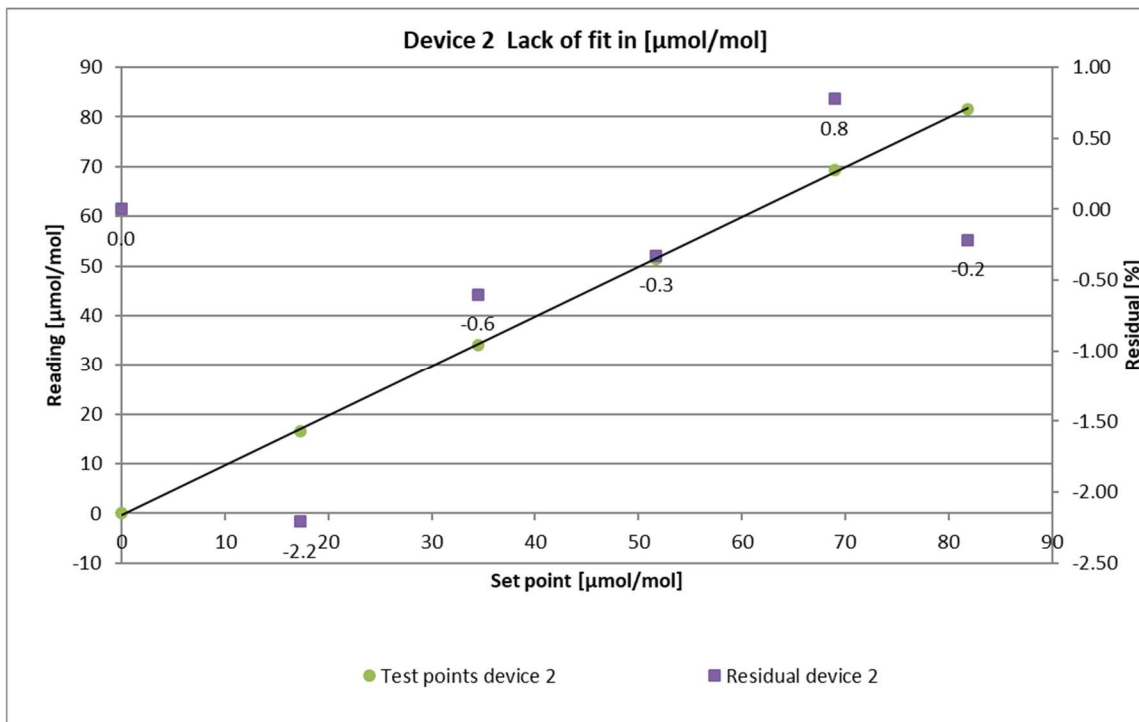


Figure 14: Lack of fit results obtained from the group averages for system 2

7.5 Assessment

The deviation from the linear regression line for instrument 1 is $-0.01 \mu\text{mol/mol}$ at zero point and no more than 2.25% of the nominal value for concentrations above zero. The deviation from the linear regression line for instrument 2 is $0.16 \mu\text{mol/mol}$ at zero point and no more than 2.21% of the nominal value for concentrations above zero.

The residuals from the ideal regression line do not exceed the limit values required by standard EN 14626.

Criterion satisfied? yes

7.6 Detailed presentation of test results

Table 12 presents the individual test results.

Report on the performance test of the N300 ambient air quality measuring system manufactured by Teledyne API for the component carbon monoxide, Report no.: 936/21255654/B

Table 12: Individual results of the lack-of-fit test

| | | device 1 [µmol/mol] | | device 2 [µmol/mol] | |
|-------------|-----------|---------------------|-----------------|---------------------|-----------------|
| time | level [%] | actual value y_i | set value x_i | actual value y_i | set value x_i |
| 15:01:00 | 80 | 69.90 | 68.97 | 69.32 | 68.97 |
| 15:02:00 | 80 | 69.95 | 68.97 | 69.32 | 68.97 |
| 15:03:00 | 80 | 70.00 | 68.97 | 69.32 | 68.97 |
| 15:04:00 | 80 | 70.05 | 68.97 | 69.38 | 68.97 |
| 15:05:00 | 80 | 70.11 | 68.97 | 69.38 | 68.97 |
| average | | 70.00 | | 69.34 | |
| $r_{c,rel}$ | | 0.51 | | 0.78 | |
| 15:11:00 | 40 | 33.71 | 34.48 | 34.08 | 34.48 |
| 15:12:00 | 40 | 33.71 | 34.48 | 34.08 | 34.48 |
| 15:13:00 | 40 | 33.77 | 34.48 | 34.08 | 34.48 |
| 15:14:00 | 40 | 33.77 | 34.48 | 34.08 | 34.48 |
| 15:15:00 | 40 | 33.77 | 34.48 | 34.08 | 34.48 |
| average | | 33.74 | | 34.08 | |
| $r_{c,rel}$ | | -2.25 | | -0.60 | |
| 15:21:00 | 0 | -0.05 | 0.00 | 0.16 | 0.00 |
| 15:22:00 | 0 | 0.00 | 0.00 | 0.16 | 0.00 |
| 15:23:00 | 0 | 0.00 | 0.00 | 0.16 | 0.00 |
| 15:24:00 | 0 | 0.00 | 0.00 | 0.16 | 0.00 |
| 15:25:00 | 0 | 0.00 | 0.00 | 0.16 | 0.00 |
| average | | -0.01 | | 0.16 | |
| r_z | | | | | |
| 15:31:00 | 60 | 52.38 | 51.72 | 51.34 | 51.72 |
| 15:32:00 | 60 | 52.38 | 51.72 | 51.39 | 51.72 |
| 15:33:00 | 60 | 52.33 | 51.72 | 51.39 | 51.72 |
| 15:34:00 | 60 | 52.33 | 51.72 | 51.39 | 51.72 |
| 15:35:00 | 60 | 52.33 | 51.72 | 51.39 | 51.72 |
| average | | 52.35 | | 51.38 | |
| $r_{c,rel}$ | | 0.51 | | -0.33 | |
| 15:41:00 | 20 | 16.57 | 17.24 | 16.61 | 17.24 |
| 15:42:00 | 20 | 16.57 | 17.24 | 16.61 | 17.24 |
| 15:43:00 | 20 | 16.57 | 17.24 | 16.66 | 17.24 |
| 15:44:00 | 20 | 16.57 | 17.24 | 16.66 | 17.24 |
| 15:45:00 | 20 | 16.57 | 17.24 | 16.66 | 17.24 |
| average | | 16.57 | | 16.64 | |
| $r_{c,rel}$ | | -2.23 | | -2.21 | |
| 15:51:00 | 95 | 82.78 | 81.90 | 81.52 | 81.90 |
| 15:52:00 | 95 | 82.78 | 81.90 | 81.52 | 81.90 |
| 15:53:00 | 95 | 82.78 | 81.90 | 81.58 | 81.90 |
| 15:54:00 | 95 | 82.78 | 81.90 | 81.63 | 81.90 |
| 15:55:00 | 95 | 82.78 | 81.90 | 81.63 | 81.90 |
| average | | 82.78 | | 81.58 | |
| $r_{c,rel}$ | | -0.06 | | -0.22 | |

7.1 8.4.7 Sensitivity coefficient of sample gas pressure

The sensitivity coefficient of sample gas pressure shall be $\leq 0.7 \mu\text{mol/mol/kPa}$.

7.2 Test procedures

Measurements are taken at a concentration of about 70% to 80% of the maximum of the certification range of NO at an absolute pressure of about (80 ± 0.2) kPa and at an absolute pressure of about (110 ± 0.2) kPa. At each pressure after waiting the time equivalent to one independent reading, three individual measurements are recorded. From these measurements, the averages at each pressure are calculated.

Measurements at different pressures shall be separated by at least four response times.

The sensitivity coefficient of sample gas pressure is calculated as follows.

$$b_{gp} = \left| \frac{(C_{P2} - C_{P1})}{(P_2 - P_1)} \right|$$

Where:

b_{gp} is the sample gas pressure sensitivity coefficient;

C_{P1} is the average concentration of the measurements at sampling gas pressure P_1 ;

C_{P2} is the average concentration of the measurements at sampling gas pressure P_2 ;

P_1 is the minimum sampling gas pressure P_1 ;

P_2 is the maximum sampling gas pressure P_2 .

b_{gp} shall comply with the performance criterion indicated above.

7.3 Testing

The test was performed in line with the requirements of EN 14626 mentioned previously.

Negative pressure was produced by reducing the test gas volume fed by means of blocking the sample gas line. For the positive pressure test, the AMS was connected to a sample gas source. The test gas volume generated was set at a higher rate than the volume sucked in by the analyser. The excess supply was diverted via a tee. The positive pressure was produced by blocking the bypass line. The test gas pressure was determined with the help of a pressure sensor located in the sample gas path.

Individual measurements were performed at concentrations around 70% to 80% of the maximum certification range and sample gas pressures of 80 kPa and 110 kPa.

7.4 Evaluation

The following sensitivity coefficients of sample gas pressure were determined:

Table 13: Sensitivity coefficient of sample gas pressure

| | requirement | device 1 | | device 2 | |
|---|-------------|----------|---|----------|---|
| sensitivity coeff. sample gas pressure b_{gp} [$\mu\text{mol/mol/kPa}$] | $\leq 0,7$ | 0.11 | ✓ | 0.02 | ✓ |

7.5 Assessment

For instrument 1, the sensitivity coefficient of sample gas pressure was 0.11 $\mu\text{mol/mol/kPa}$.

For instrument 2, the sensitivity coefficient of sample gas pressure was 0.02 $\mu\text{mol/mol/kPa}$.

Criterion satisfied? yes

7.6 Detailed presentation of test results

Table 14: Individual results of the sensitivity to changes in sample gas pressure

| time | pressure [kPa] | concentration | device 1 | device 2 |
|------------------|----------------|---------------|-------------------------|-------------------------|
| | | | [$\mu\text{mol/mol}$] | [$\mu\text{mol/mol}$] |
| 09:49:00 | 80 | 65.00 | 62.03 | 64.77 |
| 09:50:00 | 80 | 65.00 | 62.03 | 64.77 |
| 09:51:00 | 80 | 65.00 | 62.08 | 64.82 |
| average C_{P1} | | | 62.05 | 64.79 |
| 10:08:00 | 110 | 65.00 | 65.41 | 64.45 |
| 10:09:00 | 110 | 65.00 | 65.20 | 64.29 |
| 10:10:00 | 110 | 65.00 | 64.98 | 64.18 |
| average C_{P2} | | | 65.20 | 64.30 |

7.1 8.4.8 Sensitivity coefficient of sample gas temperature

The sensitivity coefficient of sample gas temperature shall be $\leq 0.3 \mu\text{mol/mol/K}$.

7.2 Test procedures

Measurements shall be performed at sample gas temperatures of $T_{G,1} = 0 \text{ }^\circ\text{C}$ and $T_{G,2} = 30 \text{ }^\circ\text{C}$. The sensitivity coefficient of sample gas temperature is determined at a concentration of around 70% to 80% of the maximum certification range. Wait the time equivalent to one independent measurement and record three individual measurements at each temperature.

The sample gas temperature, measured at the inlet of the analyser, shall be held constant for at least 30 minutes.

The sensitivity coefficient of sample gas temperature is calculated as follows:

$$b_{gt} = \frac{(C_{GT,2} - C_{GT,1})}{(T_{G,2} - T_{G,1})}$$

Where:

- b_{gt} is the sample gas temperature sensitivity coefficient;
- $C_{GT,1}$ is the average concentration of the measurements at sample gas temperature $T_{G,1}$;
- $C_{GT,2}$ is the average concentration of the measurements at sample gas temperature $T_{G,2}$;
- $T_{G,1}$ is the sample gas temperature $T_{G,1}$;
- $T_{G,2}$ is the sample gas temperature $T_{G,2}$;
- b_{gt} shall comply with the performance criterion indicated above.

7.3 Testing

The test was performed in line with the requirements of EN 14626 mentioned previously.

For the test, the test gas and the dilution gas were placed in the climatic chamber. The test gas mixture was fed through an approx. 50 metre long hose bundle, which was located in a climate chamber. The measuring systems were installed directly upstream of the climatic chamber. The end of the tube-bundle was led out of the climatic chamber and connected to the measuring systems. The feed line outside of the climatic chamber was isolated; a thermometer was used to monitor the temperature of the test gas directly upstream of the measuring system. The temperature of the climatic chamber was adjusted so that the gas temperature directly upstream of the analysers was $0 \text{ }^\circ\text{C}$ and $30 \text{ }^\circ\text{C}$ respectively.

7.4 Evaluation

Table 15: Sensitivity coefficient of the sample gas temperature

| | requirement | device 1 | | device 2 | |
|--|-------------|----------|---|----------|---|
| sensitivity coeff. sample gas temperature b_{gt} [$\mu\text{mol/mol/K}$] | $\leq 0,3$ | 0.00 | ✓ | 0.00 | ✓ |

7.5 Assessment

For instrument 1, the sensitivity coefficient of sample gas temperature was 0.00 $\mu\text{mol/mol/K}$.

For instrument 2, the sensitivity coefficient of sample gas temperature was 0.00 $\mu\text{mol/mol/K}$.

Criterion satisfied? yes

7.6 Detailed presentation of test results

Table 16: Individual results of the influence of the sample gas temperature

| time | temp [$^{\circ}\text{C}$] | concentration | device 1 | device 2 |
|--------------------|-----------------------------|---------------|-------------------------|-------------------------|
| | | | [$\mu\text{mol/mol}$] | [$\mu\text{mol/mol}$] |
| 08:29:00 | 0 | 64.66 | 64.61 | 64.55 |
| 08:30:00 | 0 | 64.66 | 64.61 | 64.61 |
| 08:31:00 | 0 | 64.66 | 64.61 | 64.61 |
| average $C_{GT,1}$ | | | 64.61 | 64.59 |
| 12:14:00 | 30 | 64.66 | 64.55 | 64.55 |
| 12:15:00 | 30 | 64.66 | 64.55 | 64.50 |
| 12:16:00 | 30 | 64.66 | 64.55 | 64.45 |
| average $C_{GT,2}$ | | | 64.55 | 64.50 |

7.1 8.4.9 Sensitivity coefficient of surrounding temperature

The sensitivity coefficient of surrounding temperature shall be $\leq 0.3 \mu\text{mol/mol/K}$.

7.2 Test procedures

The sensitivity of the analyser readings to the surrounding temperature shall be determined by performing measurements at the following temperatures within the specifications of the manufacturer:

- 1) at the minimum temperature $T_{\min} = 0 \text{ }^\circ\text{C}$;
- 2) at the temperature $T_1 = 20 \text{ }^\circ\text{C}$;
- 3) at the maximum temperature $T_{\max} = 30 \text{ }^\circ\text{C}$ (here $45 \text{ }^\circ\text{C}$)

For these tests, a climate chamber is necessary.

The sensitivity coefficient of sample gas temperature is determined at zero concentration and a concentration of about 70% to 80% of the maximum of the certification range. At each temperature setting after waiting the time equivalent to one independent measurement, three individual measurements at zero and at span shall be recorded.

The sequence of test temperatures is as follows:

T_1, T_{\min}, T_1 and T_1, T_{\max}, T_1

At the first temperature (T_1), the analyser shall be adjusted at zero and at span level (70% to 80% of the maximum of the certification range). Then three individual measurements are recorded after waiting the time equivalent to one independent reading at T_1 , at T_{\min} and again at T_1 . This measurement procedure shall be repeated at the temperature sequence of T_1, T_{\max} and at T_1 .

In order to exclude any possible drift due to factors other than temperature, the measurements at T_1 are averaged, which is taken into account in the following formula for calculation of the sensitivity coefficient for temperature dependence:

$$b_{st} = \left| \frac{x_T - \frac{x_1 + x_2}{2}}{T_S - T_{S,0}} \right|$$

Where:

b_{st} is the surrounding temperature sensitivity coefficient;

x_T is the average of the measurements at T_{\min} or T_{\max} ;

x_1 is the first average of the measurements at T_1 ;

x_2 is the second average of the measurements at T_1 ;

T_S is the surrounding temperature in the laboratory;

$T_{S,0}$ is the average of the surrounding temperatures at set point.

For reporting the surrounding temperature dependence the higher value is taken of the two calculations of the temperature dependence at $T_{S,1}$ and $T_{S,2}$.

b_{st} shall comply with the performance criterion indicated above.

7.3 Testing

The test was performed in line with the requirements of EN 14626 mentioned previously. According to the manufacturer's specification, the measuring system can be used in a temperature range from 0 °C to 45 °C. Therefore, the upper temperature limit was set to 45 °C during the test of sensitivities to ambient temperature.

7.4 Evaluation

The following sensitivity coefficients of surrounding temperature have been determined:

Table 17: Sensitivity coefficient of surrounding temperature

| | requirements | device 1 | | device 2 | |
|---|--------------|----------|---|----------|---|
| sensitivity coefficient at 0 °C for zero level [$\mu\text{mol}/\text{mol}/\text{K}$] | $\leq 0,3$ | 0.004 | ✓ | 0.004 | ✓ |
| sensitivity coefficient at 45 °C for zero level [$\mu\text{mol}/\text{mol}/\text{K}$] | $\leq 0,3$ | 0.029 | ✓ | 0.019 | ✓ |
| sensitivity coefficient at 0 °C for span level [$\mu\text{mol}/\text{mol}/\text{K}$] | $\leq 0,3$ | 0.045 | ✓ | 0.062 | ✓ |
| sensitivity coefficient at 45 °C for span level [$\mu\text{mol}/\text{mol}/\text{K}$] | $\leq 0,3$ | 0.076 | ✓ | 0.064 | ✓ |

As is evident from Table 17, the sensitivity coefficient of the surrounding temperature at zero and at span point meets the performance criteria.

7.5 Assessment

The sensitivity coefficient b_{st} of the surrounding temperature did not exceed the performance criterion specified at $0.3 \mu\text{mol/mol/K}$. For the purpose of uncertainty calculation, the largest sensitivity coefficient b_{st} is used for both instruments. This was $0.076 \mu\text{mol/mol/K}$ for instrument 1 and $0.064 \mu\text{mol/mol/K}$ for instrument 2.

Criterion satisfied? yes

7.6 Detailed presentation of test results

Table 18 presents the individual test results.

Table 18: Individual results of the sensitivity coefficient of surrounding temperature

| | | zero level | | | span level | | | | |
|---------------------------------------|----------|------------|-------------------------|-------------------------|------------|-----------|-------------------------|-------------------------|----------|
| | | | | device 1 | device 2 | | | device 1 | device 2 |
| date | time | temp [°C] | [$\mu\text{mol/mol}$] | [$\mu\text{mol/mol}$] | time | temp [°C] | [$\mu\text{mol/mol}$] | [$\mu\text{mol/mol}$] | |
| 03.05.2022 | 06:57:00 | 20 | 0.0 | 0.0 | 07:05:00 | 20 | 65.1 | 65.1 | |
| 03.05.2022 | 06:58:00 | 20 | 0.1 | 0.1 | 07:06:00 | 20 | 65.1 | 65.2 | |
| 03.05.2022 | 06:59:00 | 20 | 0.0 | 0.1 | 07:07:00 | 20 | 65.1 | 66.1 | |
| average ($X_{1(TS1)}$) | | | 0.0 | 0.1 | | | 65.1 | 65.5 | |
| 03.05.2022 | 16:39:00 | 0 | 0.1 | 0.1 | 16:46:00 | 0 | 64.1 | 64.0 | |
| 03.05.2022 | 16:40:00 | 0 | 0.1 | 0.1 | 16:47:00 | 0 | 64.1 | 64.0 | |
| 03.05.2022 | 16:41:00 | 0 | 0.1 | 0.0 | 16:48:00 | 0 | 64.1 | 64.0 | |
| average ($X_{Ts,1}$) | | | 0 | 0.1 | | | 64.1 | 64.0 | |
| 04.05.2022 | 06:50:00 | 20 | -0.1 | 0.2 | 06:57:00 | 20 | 64.9 | 65.0 | |
| 04.04.2022 | 06:51:00 | 20 | -0.1 | 0.2 | 06:58:00 | 20 | 64.9 | 65.0 | |
| 04.05.2022 | 06:52:00 | 20 | -0.1 | 0.4 | 06:59:00 | 20 | 64.9 | 65.0 | |
| average ($X_{2(TS1)} = X_{1(TS2)}$) | | | -0.1 | 0.2 | | | 64.9 | 65.0 | |
| 04.05.2022 | 15:54:00 | 45 | 0.7 | 0.6 | 16:01:00 | 45 | 66.5 | 66.3 | |
| 04.05.2022 | 15:55:00 | 45 | 0.6 | 0.6 | 16:02:00 | 45 | 66.5 | 66.3 | |
| 04.05.2022 | 15:56:00 | 45 | 0.8 | 0.5 | 16:03:00 | 45 | 66.4 | 66.3 | |
| average ($X_{Ts,2}$) | | | 0.7 | 0.6 | | | 66.5 | 66.3 | |
| 05.05.2022 | 16:20:00 | 20 | 0.1 | 0.1 | 16:27:00 | 20 | 64.2 | 64.4 | |
| 05.05.2022 | 16:21:00 | 20 | 0.1 | -0.1 | 16:28:00 | 20 | 64.2 | 64.4 | |
| 05.05.2022 | 16:22:00 | 20 | 0.0 | -0.1 | 16:29:00 | 20 | 64.3 | 64.4 | |
| average ($X_{2(TS2)}$) | | | 0.0 | 0.0 | | | 64.2 | 64.4 | |

7.1 8.4.10 Sensitivity coefficient of electrical voltage

The sensitivity coefficient of electrical voltage shall not exceed 0.3 µmol/mol/V.

7.2 Test procedures

The sensitivity coefficient of electrical voltage shall be determined at both ends of the voltage range specified by the manufacturer, V_1 and V_2 , at zero concentration and at a concentration around 70% to 80% of the maximum of the certification range. After waiting the time equivalent to one independent measurement, three individual measurements at each voltage and concentration level shall be recorded.

The sensitivity coefficient to electrical voltage in accordance with EN 14626 is calculated as follows:

$$b_v = \frac{|(C_{V2} - C_{V1})|}{|V_2 - V_1|}$$

Where:

b_v is the voltage sensitivity coefficient,

C_{V1} is the average concentration reading of the measurements at voltage V_1

C_{V2} is the average concentration reading of the measurements at voltage V_2

V_1 is the minimum voltage V_{\min}

V_2 is the maximum voltage V_{\max}

For reporting the dependence on voltage, the higher value of the result at zero and span level shall be taken.

b_v shall comply with the performance criterion indicated above.

7.3 Testing

For the purpose of determining the sensitivity coefficient to electrical voltage, a transformer was looped into the measuring system's voltage supply. Test gases were applied to the zero and span point at various voltages.

7.4 Evaluation

The following sensitivity coefficients of electrical voltage have been determined:

Table 19: Sensitivity coefficient of electrical voltage

| | requirement | device 1 | | device 2 | |
|---|-------------|----------|---|----------|---|
| sensitivity coeff. of voltage b_v at zero level [$\mu\text{mol/mol/V}$] | $\leq 0,3$ | 0.00 | ✓ | 0.00 | ✓ |
| sensitivity coeff. of voltage b_v at span level [$\mu\text{mol/mol/V}$] | $\leq 0,3$ | 0.00 | ✓ | 0.00 | ✓ |

7.5 Assessment

At no test item did the sensitivity coefficient of electrical voltage b_v exceed the value of $0.3 \mu\text{mol/mol/V}$ specified in standard EN 14626. For the purpose of the uncertainty calculation, the largest b_v is used for both instruments. This was $0.00 \mu\text{mol/mol/K}$ for instrument 1 and $0.00 \mu\text{mol/mol/K}$ for instrument 2.

Criterion satisfied? yes

7.6 Detailed presentation of test results

Table 20: Individual results of the sensitivity coefficient of electrical voltage

| | | | device 1 | device 2 |
|--------------------------|-------------|---------------|-------------------------|-------------------------|
| time | voltage [V] | concentration | [$\mu\text{mol/mol}$] | [$\mu\text{mol/mol}$] |
| 10:38:00 | 207 | 0 | 0 | 0 |
| 10:39:00 | 207 | 0 | 0 | 0 |
| 10:40:00 | 207 | 0 | 0 | 0 |
| average C_{V1} at zero | | | 0.00 | 0.00 |
| 10:51:00 | 253 | 0 | 0 | 0 |
| 10:52:00 | 253 | 0 | -0.05 | 0 |
| 10:53:00 | 253 | 0 | -0.05 | 0 |
| average C_{V2} at zero | | | -0.03 | 0.00 |
| 11:20:00 | 207 | 65.00 | 64.77 | 65.04 |
| 11:21:00 | 207 | 65.00 | 64.77 | 64.98 |
| 11:22:00 | 207 | 65.00 | 64.66 | 65.04 |
| average C_{V1} at Span | | | 64.73 | 65.02 |
| 11:33:00 | 253 | 65.00 | 64.77 | 65.04 |
| 11:34:00 | 253 | 65.00 | 64.5 | 65.09 |
| 11:35:00 | 253 | 65.00 | 64.45 | 65.04 |
| average C_{V2} at Span | | | 64.57 | 65.06 |

7.1 8.4.11 Interferents

Interferents at zero and at the concentration c_t (at the level of the 8-hour limit = 8.6 $\mu\text{mol/mol}$ for CO). The maximum permissible deviations for the interfering components CO_2 , NO and N_2O are each $\leq 0.5 \mu\text{mol/mol}$, for $\text{H}_2\text{O} \leq 1.0 \mu\text{mol/mol}$.

7.2 Test procedures

The analyser response to certain interferents shall be tested. The interferents can give a positive or negative response. The test is performed at zero concentration and a test gas concentration (c_t) similar to the 8-hour limit (8.6 $\mu\text{mol/mol}$ for CO).

The concentration of the mixtures of the test gases with the interferent shall have an expanded uncertainty of $\leq 5\%$ and shall be traceable to nationally accepted standards. The interferents to be tested and their respective concentrations are given in Table 21. The influence of each interferent shall be determined separately. The concentration of the measurand shall be corrected for the dilution flux due to the addition of the interfering component (e.g. water vapour).

After adjustment of the analyser at zero and span level, the analyser shall be fed with a mixture of zero gas and the interferent to be investigated with the concentration as given in Table 21. With this mixture, one independent measurement followed by two individual measurements shall be carried out. This procedure shall be repeated with a mixture of the measurand at concentration c_t and the interferent to be investigated. The influence quantities at zero and concentration c_t are calculated from:

$$X_{\text{int},z} = x_z$$

$$X_{\text{int},ct} = x_{ct} - c_t$$

Where:

$X_{\text{int},z}$ is the influence quantity of the interferent at zero;

x_z is the average of the measurements at zero;

$X_{\text{int},ct}$ is the influence quantity of the interferent at concentration c_t ;

x_{ct} is the average of the measurements at concentration c_t

c_t is the applied concentration at the 8-hour limit value.

The influence quantities of the interferents shall comply with the performance criteria indicated above, both at zero and at concentration c_t .

7.3 Testing

The test was performed in line with the requirements of EN 14626 mentioned previously. The instruments were set at zero and concentration c_t (approximately 8.6 $\mu\text{mol/mol}$). Zero and test gas with the various interfering components were then applied. The interferents listed in Table 21 were applied in the concentrations indicated.

Table 21: Interferents in accordance with EN 14626

| Interferent | Value |
|------------------|--------------|
| H ₂ O | 19 mmol/mol |
| CO ₂ | 500 µmol/mol |
| NO | 1 µmol/mol |
| N ₂ O | 50 nmol/mol |

7.4 Evaluation

The following overview presents the influence quantities of each interfering substance. When determining the influence of moisture, the dilution effect which occurs inside the test gas generation system was also taken into account.

 Table 22: Influence of the tested interferents ($c_i = 8.6 \mu\text{mol/mol}$)

| | requirements | device 1 | | device 2 | |
|---|----------------|----------|---|----------|---|
| influence quantity interferent H ₂ O at zero [µmol/mol] | ≤ 1.0 µmol/mol | -0.02 | ✓ | -0.11 | ✓ |
| influence quantity interferent H ₂ O at c_i [µmol/mol] | ≤ 1.0 µmol/mol | -0.27 | ✓ | -0.14 | ✓ |
| influence quantity interferent CO ₂ at zero [µmol/mol] | ≤ 0.5 µmol/mol | 0.00 | ✓ | 0.17 | ✓ |
| influence quantity interferent CO ₂ at c_i [µmol/mol] | ≤ 0.5 µmol/mol | -0.06 | ✓ | 0.05 | ✓ |
| influence quantity interferent NO at zero [µmol/mol] | ≤ 0.5 µmol/mol | 0.00 | ✓ | 0.00 | ✓ |
| influence quantity interferent NO at c_i [µmol/mol] | ≤ 0.5 µmol/mol | -0.02 | ✓ | 0.06 | ✓ |
| influence quantity interferent N ₂ O at zero [µmol/mol] | ≤ 0.5 µmol/mol | 0.02 | ✓ | 0.05 | ✓ |
| influence quantity interferent N ₂ O at c_i [µmol/mol] | ≤ 0.5 µmol/mol | -0.13 | ✓ | -0.09 | ✓ |

7.5 Assessment

This results in a value for the cross-sensitivity at zero of -0.02 µmol/mol for instrument 1 and -0.11 µmol/mol for instrument 2 for H₂O; 0.00 µmol/mol for instrument 1 and 0.17 µmol/mol for instrument 2 for CO₂; 0.00 µmol/mol for instrument 1 and 0.00 µmol/mol for instrument 2 for NO and finally 0.02 µmol/mol for instrument 1 and 0.05 µmol/mol for instrument 2 for N₂O.

For the cross-sensitivity at the limit value c_i , the values are -0.27 µmol/mol for instrument 1 and -0.14 µmol/mol for instrument 2 for H₂O; -0.06 µmol/mol for instrument 1 and 0.05 µmol/mol for instrument 2 for CO₂; -0.02 µmol/mol for instrument 1 and 0.06 µmol/mol for instrument 2 for NO and finally -0.13 µmol/mol for instrument 1 and -0.09 µmol/mol for instrument 2 for N₂O.

Criterion satisfied? yes

7.6 Detailed presentation of test results

Table 23 presents the individual test results.

Table 23: Individual values from the interfering substances test

| | without interferents | | | with interferents | | |
|--|----------------------|----------|----------|-------------------|----------|----------|
| | time | device 1 | device 2 | time | device 1 | device 2 |
| zero gas + H ₂ O (19 mmol/mol) | 08:20:00 | 0.00 | 0.16 | 0.36 | 0.00 | 0.00 |
| | 08:21:00 | 0.00 | 0.16 | 0.36 | -0.05 | 0.00 |
| | 08:22:00 | 0.00 | 0.00 | 0.36 | 0.00 | 0.00 |
| | average x_z | 0.00 | 0.11 | average x_z | -0.02 | 0.00 |
| test gas c_t + H ₂ O (19 mmol/mol) | 10:12:00 | 8.71 | 8.60 | 0.43 | 8.49 | 8.44 |
| | 10:13:00 | 8.71 | 8.65 | 0.43 | 8.44 | 8.44 |
| | 10:14:00 | 8.71 | 8.65 | 0.43 | 8.39 | 8.60 |
| | average x_{ct} | 8.71 | 8.63 | average x_{ct} | 8.44 | 8.49 |
| zero gas + CO ₂ (500 µmol/mol) | 07:16:00 | 0.00 | 0.00 | 0.31 | 0.00 | 0.00 |
| | 07:17:00 | 0.00 | 0.00 | 0.31 | 0.00 | 0.00 |
| | 07:18:00 | 0.00 | -0.50 | 0.31 | 0.00 | 0.00 |
| | average x_z | 0.00 | -0.17 | average x_z | 0.00 | 0.00 |
| test gas c_t + CO ₂ (500 µmol/mol) | 09:11:00 | 8.71 | 8.71 | 0.39 | 8.65 | 8.76 |
| | 09:12:00 | 8.71 | 8.71 | 0.39 | 8.65 | 8.76 |
| | 09:13:00 | 8.71 | 8.71 | 0.39 | 8.65 | 8.76 |
| | average x_{ct} | 8.71 | 8.71 | average x_{ct} | 8.65 | 8.76 |
| zero gas + NO (1 µmol/mol) | 07:38:00 | 0.00 | 0.00 | 0.33 | 0.00 | 0.00 |
| | 07:39:00 | 0.00 | 0.00 | 0.33 | 0.00 | 0.00 |
| | 07:40:00 | 0.00 | 0.00 | 0.33 | 0.00 | 0.00 |
| | average x_z | 0.00 | 0.00 | average x_z | 0.00 | 0.00 |
| test gas c_t + NO (1 µmol/mol) | 09:32:00 | 8.60 | 8.49 | 0.40 | 8.60 | 8.55 |
| | 09:33:00 | 8.60 | 8.49 | 0.40 | 8.60 | 8.55 |
| | 09:34:00 | 8.65 | 8.49 | 0.41 | 8.60 | 8.55 |
| | average x_{ct} | 8.62 | 8.49 | average x_{ct} | 8.60 | 8.55 |
| zero gas + N ₂ O (50 nmol/mol) | 08:00:00 | -0.05 | 0.11 | 0.34 | 0.00 | 0.16 |
| | 08:01:00 | 0.00 | 0.11 | 0.34 | 0.00 | 0.16 |
| | 08:02:00 | 0.00 | 0.11 | 0.34 | 0.00 | 0.16 |
| | average x_z | -0.02 | 0.11 | average x_z | 0.00 | 0.16 |
| test gas c_t + N ₂ O (50 nmol/mol) | 09:52:00 | 8.60 | 8.55 | 0.42 | 8.44 | 8.44 |
| | 09:53:00 | 8.60 | 8.55 | 0.42 | 8.49 | 8.44 |
| | 09:54:00 | 8.60 | 8.55 | 0.42 | 8.49 | 8.49 |
| | average x_{ct} | 8.60 | 8.55 | average x_{ct} | 8.47 | 8.46 |

7.1 8.4.12 Averaging test

The averaging effect shall not exceed 7% of the measured value.

7.2 Test conditions

The averaging test gives a measure of the uncertainty in the averaged values caused by short-term concentration variations in the sampled air shorter than the time scale of the measurement process in the analyser. In general, the output of an analyser is a result of the determination of a reference concentration (normally zero) and the actual concentration which takes a certain time.

For the determination of the uncertainty due to the averaging, the following concentrations are applied to the analyser and readings are taken at each concentration: a constant carbon monoxide concentration between zero and the concentration c_t (8.6 $\mu\text{mol/mol}$).

The time span (t_c) of the constant carbon monoxide concentrations must be at least equal to that required to obtain four independent readings (which is equal to at least sixteen response times). The time period (t_v) of the varying carbon monoxide concentration shall be at least equal to a period to obtain four independent readings. The time period (t_{03}) for the carbon monoxide concentration shall be 45 s followed by a period (t_{zero}) of 45 s of zero concentration. Further:

c_t is the test gas concentration;

t_v is a time period including a whole number of t_{CO} and t_{zero} pairs, and contains a minimum of 3 such pairs.

The change from t_{CO} to t_{zero} shall be within 0.5 s. The change from t_c to t_v shall be within one response time of the analyser under test.

The averaging effect (E_{av}) is calculated according to:

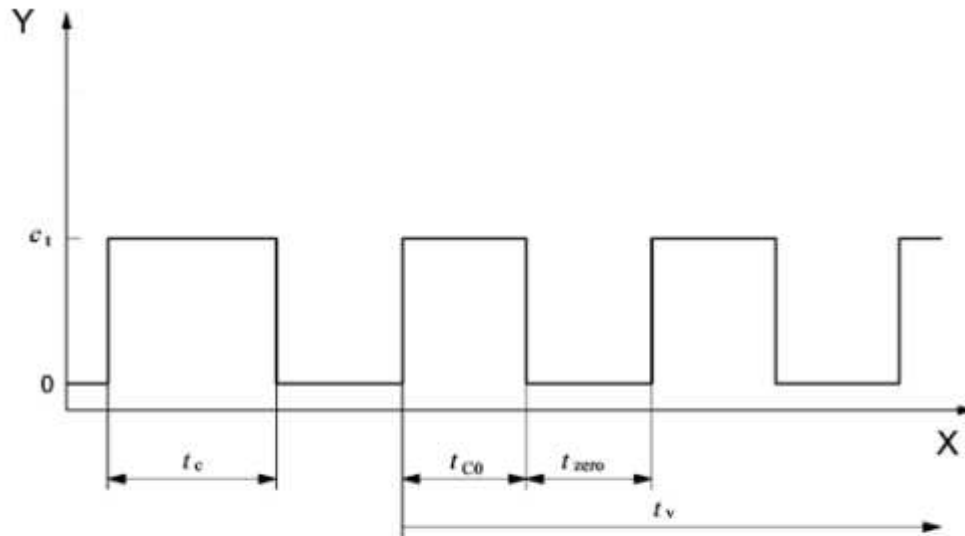
$$E_{\text{av}} = \frac{C_{\text{const}}^{\text{av}} - 2C_{\text{var}}^{\text{av}}}{C_{\text{const}}^{\text{av}}} * 100$$

Where:

E_{av} is the averaging effect (%);

$C_{\text{const}}^{\text{av}}$ is the average of at least four independent measurements during the constant concentration period;

$C_{\text{var}}^{\text{av}}$ is the average of at least four independent measurements during the variable concentration period;



Key

Y concentration ($\mu\text{mol/mol}$)
X time

Figure 15: Test of the averaging effect ($t_{CO} = t_{zero} = 45 \text{ s.}$)

7.3 Testing

The averaging test was performed in compliance with the requirements specified in EN 14626. The test was carried out with a step change in the carbon monoxide concentration between zero and the concentration c_t ($8.6 \mu\text{mol/mol}$). First, the average was calculated at a constant test gas concentration. Then, a three-way valve served to switch between zero and test gas every 45 s. During that period of alternating test gas application the average was calculated again.

7.4 Evaluation

The following averages were determined during the test:

Table 24: Results of the averaging test

| | requirement | device 1 | | device 2 | |
|-------------------------------|-------------|----------|---|----------|---|
| averaging effect E_{av} [%] | $\leq 7\%$ | 4.3 | ✓ | 5.8 | ✓ |

This results in the following averaging effects:

System 1: 4.3%

System 2: 5.8%

7.5 Assessment

The performance criterion of EN 14626 is fully met with 4.3 % for instrument 1 and 5.8 % for instrument 2.

Criterion satisfied? yes

7.6 Detailed presentation of test results

Table 25 presents the individual results of the averaging test:

Table 25: Results of the averaging test

| | | device 1 | device 2 |
|--|----------|-------------------------|-------------------------|
| | time | [$\mu\text{mol/mol}$] | [$\mu\text{mol/mol}$] |
| average constant concentration $C_{av,c}$ | 08:32:00 | 8.68 | 8.75 |
| | till | | |
| | 08:51:00 | | |
| average variable concentration $C_{av,c}$ | 08:52:00 | 4.18 | 4.15 |
| | till | | |
| | 09:11:00 | | |

| | | device 1 | device 2 |
|--|----------|-------------------------|-------------------------|
| | time | [$\mu\text{mol/mol}$] | [$\mu\text{mol/mol}$] |
| average constant concentration $C_{av,c}$ | 09:23:00 | 8.59 | 8.76 |
| | till | | |
| | 09:42:00 | | |
| average variable concentration $C_{av,c}$ | 09:43:00 | 4.11 | 4.08 |
| | till | | |
| | 10:02:00 | | |

| | | device 1 | device 2 |
|--|----------|-------------------------|-------------------------|
| | time | [$\mu\text{mol/mol}$] | [$\mu\text{mol/mol}$] |
| average constant concentration $C_{av,c}$ | 10:13:00 | 8.55 | 8.76 |
| | till | | |
| | 10:32:00 | | |
| average variable concentration $C_{av,c}$ | 10:33:00 | 4.06 | 4.14 |
| | till | | |
| | 10:52:00 | | |

7.1 8.4.13 Difference sample/calibration port

The difference between sample and calibration port shall not exceed 1.0%.

7.2 Test procedures

If the analyser has different ports for feeding sample gas and calibration gas, the difference in response of the analyser to feeding through the sample or calibration port shall be tested. The test shall be carried out by feeding the analyser with a test gas with a concentration of 70% to 80% of the maximum of the certification range of through the sample port. The test shall consist of one independent measurement followed by two individual measurements. After a period of at least four response times, the test shall be repeated using the calibration port. The difference shall be calculated according to:

$$\Delta x_{SC} = \frac{x_{sam} - x_{cal}}{c_t} \times 100$$

Where:

Δx_{SC} is the difference sample/calibration port;

x_{sam} is the average of the measured concentration using the sample port;

x_{cal} is the average of the measured concentration using the calibration port;

c_t is the concentration of the test gas;

Δ_{SC} shall comply with the performance criterion indicated above.

7.3 Testing

The test was performed in compliance with the requirements specified in EN 14626. During the test, the gas path was switched between sample gas and span gas inlet using a three-way valve.

7.4 Evaluation

During the test, the following differences between sample and calibration port were determined:

Table 26: Results of determining the difference between sample/calibration inlet

| | requirement | device 1 | | device 2 | |
|--|-------------|----------|---|----------|---|
| difference sample/calibration port Δx_{cs} [%] | $\leq 1\%$ | 0.14 | ✓ | -0.06 | ✓ |

7.5 Assessment

The performance criterion of EN 14626 is fully met with 0.14 % for instrument 1 and -0.06 % for instrument 2.

Criterion satisfied? yes

7.6 Detailed presentation of test results

Table 27 presents the individual values.

Table 27: Individual results for testing the difference between sample and calibration port

| | | device 1 | device 2 |
|------------------|----------|-------------------------|-------------------------|
| | time | [$\mu\text{mol/mol}$] | [$\mu\text{mol/mol}$] |
| calibration port | 12:53:00 | 65.04 | 64.98 |
| | 12:54:00 | 65.04 | 64.98 |
| | 12:55:00 | 65.09 | 65.04 |
| sample port | 13:03:00 | 64.98 | 65.04 |
| | 13:04:00 | 64.93 | 65.04 |
| | 13:05:00 | 64.98 | 65.04 |

7.1 8.5.4 Long-term drift

*The long-term drift at zero point shall not exceed $\leq 0.5 \mu\text{mol/mol}$.
Long-term drift at span level shall not exceed 5% of the certification range.*

7.2 Test procedures

After each bi-weekly zero and span check, the drift of the analysers under test shall be calculated at zero and at span following the procedures as given below. If the drift compared to the initial calibration exceeds one of the performance criteria for drift at zero or span level, the “period of unattended operation” equals the number of weeks until the observation of the infringement, minus two weeks. For further (uncertainty) calculations, the values for “long term drift” are the values for zero and span drift over the period of unattended operation.

At the beginning of the drift period, five individual measurements were performed at zero and span level following the calibration (after waiting the time equivalent to a single independent reading).

The long-term drift is calculated as follows:

$$D_{L,Z} = (C_{Z,1} - C_{Z,0})$$

Where:

$D_{L,Z}$ is the drift at zero;

$C_{Z,0}$ is the average concentration of the measurements at zero at the beginning of the drift period;

$C_{Z,1}$ is the average concentration of the measurements at zero at the end of the drift period;

$D_{L,Z}$ shall comply with the performance criterion indicated above.

$$D_{L,S} = \frac{(C_{S,1} - C_{S,0}) - D_{L,Z}}{C_{S,1}} \times 100$$

Where:

$D_{L,S}$ is the drift at span concentration;

$C_{S,0}$ is the average concentration of the measurements at span level at the beginning of the drift period;

$C_{S,1}$ is the average concentration of the measurements at span level at the end of the drift period;

$D_{L,S}$ shall comply with the performance criterion indicated above.

7.3 Testing

For the purpose of this test, test gas was applied every other week. Table 28 and Table 29 report the measured values for bi-weekly test gas applications.

7.4 Evaluation

Table 28: Results for the long-term drift at zero

| | | requierment | Device 1 | | Device 2 | |
|---|------------|-------------|----------|---|----------|---|
| average start $C_{z,1}$ at zero [$\mu\text{mol/mol}$] | 16.05.2022 | $\leq 0,5$ | -- | ✓ | -- | ✓ |
| long term drift $D_{L,z}$ at zero [$\mu\text{mol/mol}$] | 30.05.2022 | $\leq 0,5$ | 0.02 | ✓ | 0.00 | ✓ |
| long term drift $D_{L,z}$ at zero [$\mu\text{mol/mol}$] | 13.06.2022 | $\leq 0,5$ | 0.00 | ✓ | -0.03 | ✓ |
| long term drift $D_{L,z}$ at zero [$\mu\text{mol/mol}$] | 27.06.2022 | $\leq 0,5$ | 0.00 | ✓ | 0.01 | ✓ |
| long term drift $D_{L,z}$ at zero [$\mu\text{mol/mol}$] | 11.07.2022 | $\leq 0,5$ | 0.00 | ✓ | 0.02 | ✓ |
| long term drift $D_{L,z}$ at zero [$\mu\text{mol/mol}$] | 25.07.2022 | $\leq 0,5$ | 0.00 | ✓ | -0.04 | ✓ |
| long term drift $D_{L,z}$ at zero [$\mu\text{mol/mol}$] | 08.08.2022 | $\leq 0,5$ | 0.00 | ✓ | 0.04 | ✓ |
| long term drift $D_{L,z}$ at zero [$\mu\text{mol/mol}$] | 22.08.2022 | $\leq 0,5$ | 0.00 | ✓ | -0.04 | ✓ |

Table 29: Results for the long-term drift at span

| | | requierment | Device 2 1 | | Device 2 | |
|---|------------|---------------|------------|---|----------|---|
| average start $C_{s,1}$ at span [$\mu\text{mol/mol}$] | 16.05.2022 | $\leq 5,0 \%$ | -- | ✓ | -- | ✓ |
| long term drift $D_{L,s}$ at span [$\mu\text{mol/mol}$] | 30.05.2022 | $\leq 5,0 \%$ | -0.10 | ✓ | 0.24 | ✓ |
| long term drift $D_{L,s}$ at span [$\mu\text{mol/mol}$] | 13.06.2022 | $\leq 5,0 \%$ | -0.35 | ✓ | 0.75 | ✓ |
| long term drift $D_{L,s}$ at span [$\mu\text{mol/mol}$] | 27.06.2022 | $\leq 5,0 \%$ | -0.56 | ✓ | 1.14 | ✓ |
| long term drift $D_{L,s}$ at span [$\mu\text{mol/mol}$] | 11.07.2022 | $\leq 5,0 \%$ | -0.20 | ✓ | 0.84 | ✓ |
| long term drift $D_{L,s}$ at span [$\mu\text{mol/mol}$] | 25.07.2022 | $\leq 5,0 \%$ | 0.18 | ✓ | 1.19 | ✓ |
| long term drift $D_{L,s}$ at span [$\mu\text{mol/mol}$] | 08.08.2022 | $\leq 5,0 \%$ | -1.49 | ✓ | -0.06 | ✓ |
| long term drift $D_{L,s}$ at span [$\mu\text{mol/mol}$] | 22.08.2022 | $\leq 5,0 \%$ | -1.56 | ✓ | 1.56 | ✓ |

7.5 Assessment

Maximum long-term drift at zero point $D_{i,z}$ was at $0.02 \mu\text{mol/mol}$ for instrument 1 and $0.04 \mu\text{mol/mol}$ for instrument 2. Maximum long-term drift at span point $D_{i,s}$ was at -1.56% for instrument 1 and 1.56% for instrument 2.

Criterion satisfied? yes

7.6 Detailed presentation of test results

Table 30 presents the individual values obtained for the determination of the long-term drift.

Report on the performance test of the N300 ambient air quality measuring system manufactured by Teledyne API for the component carbon monoxide, Report no.: 936/21255654/B

Page 111 of 259

Table 30: Individual results for the drift tests

| Zero Concentration | | | |
|---------------------------------|------------|-------------|-------------|
| Date | Time | Device 1 | Device 2 |
| | | [µmol/mol] | [µmol/mol] |
| 16.05.2022 | 11:42:00 | 0.00 | 0.00 |
| | 11:43:00 | 0.00 | 0.00 |
| | 11:44:00 | 0.00 | 0.00 |
| | Mittel | 0.00 | 0.00 |
| | 11:46:00 | 0.00 | 0.00 |
| | 11:47:00 | 0.00 | 0.00 |
| | 11:48:00 | 0.00 | 0.00 |
| | Mittel | 0.00 | 0.00 |
| | 11:50:00 | 0.00 | 0.00 |
| | 11:51:00 | 0.00 | 0.00 |
| | 11:52:00 | 0.00 | 0.00 |
| | Mittel | 0.00 | 0.00 |
| | 11:54:00 | 0.00 | 0.00 |
| | 11:55:00 | 0.00 | 0.00 |
| | 11:56:00 | 0.00 | 0.00 |
| | Mittel | 0.00 | 0.00 |
| | 11:58:00 | 0.00 | 0.00 |
| | 11:59:00 | 0.00 | 0.00 |
| | 12:00:00 | 0.00 | 0.60 |
| | | 0.00 | 0.20 |
| Average field start cz,0 | | 0.00 | 0.04 |
| 30.05.2022 | 08:15:00 | 0.05 | 0.05 |
| | 08:16:00 | 0.05 | 0.05 |
| | 08:17:00 | 0.00 | 0.05 |
| | 08:18:00 | 0.00 | 0.05 |
| | 08:19:00 | 0.00 | 0.00 |
| | aver. Cz,1 | 0.02 | 0.04 |
| 13.06.2022 | 07:40:00 | 0.00 | 0.05 |
| | 07:41:00 | 0.00 | 0.00 |
| | 07:42:00 | 0.00 | 0.00 |
| | 07:43:00 | 0.00 | 0.00 |
| | 07:44:00 | 0.00 | 0.00 |
| | aver. Cz,1 | 0.00 | 0.01 |
| 27.06.2022 | 07:24:00 | 0.00 | 0.05 |
| | 07:25:00 | 0.00 | 0.05 |
| | 07:26:00 | 0.00 | 0.05 |
| | 07:27:00 | 0.00 | 0.05 |
| | 07:28:00 | 0.00 | 0.05 |
| | aver. Cz,1 | 0.00 | 0.05 |
| 11.07.2022 | 07:48:00 | 0.00 | 0.11 |
| | 07:49:00 | 0.00 | 0.11 |
| | 07:50:00 | 0.00 | 0.05 |
| | 07:51:00 | 0.00 | 0.05 |
| | 07:52:00 | 0.00 | 0.00 |
| | aver. Cz,1 | 0.00 | 0.06 |
| 25.07.2022 | 07:10:00 | 0.00 | 0.00 |
| | 07:11:00 | 0.00 | 0.00 |
| | 07:12:00 | 0.00 | 0.00 |
| | 07:13:00 | 0.00 | 0.00 |
| | 07:14:00 | 0.00 | 0.00 |
| | aver. Cz,1 | 0.00 | 0.00 |
| 08.08.2022 | 07:19:00 | 0.00 | 0.16 |
| | 07:20:00 | 0.00 | 0.16 |
| | 07:21:00 | 0.00 | 0.05 |
| | 07:22:00 | 0.00 | 0.00 |
| | 07:23:00 | 0.00 | 0.00 |
| | aver. Cz,1 | 0.00 | 0.08 |
| 22.08.2022 | 08:13:00 | 0.00 | 0.00 |
| | 08:14:00 | 0.00 | 0.00 |
| | 08:15:00 | 0.00 | 0.00 |
| | 08:16:00 | 0.00 | 0.00 |
| | 08:17:00 | 0.00 | 0.00 |
| | aver. Cz,1 | 0.00 | 0.00 |

| C _i -Concentration | | | |
|---------------------------------|------------|--------------|--------------|
| Date | Time | Device 1 | Device 2 |
| | | [µmol/mol] | [µmol/mol] |
| 16.05.2022 | 12:06:00 | 65.15 | 65.09 |
| | 12:07:00 | 65.15 | 65.09 |
| | 12:08:00 | 65.09 | 65.04 |
| | Mittel | 65.13 | 65.07 |
| | 12:10:00 | 65.09 | 64.93 |
| | 12:11:00 | 65.04 | 64.88 |
| | 12:12:00 | 65.04 | 64.82 |
| | Mittel | 65.06 | 64.82 |
| | 12:14:00 | 65.04 | 64.77 |
| | 12:15:00 | 65.04 | 64.77 |
| | 12:16:00 | 65.04 | 64.72 |
| | Mittel | 65.04 | 64.75 |
| | 12:18:00 | 65.04 | 64.82 |
| | 12:19:00 | 65.04 | 64.77 |
| | 12:20:00 | 65.04 | 64.77 |
| | Mittel | 65.04 | 64.79 |
| | 12:22:00 | 65.04 | 64.77 |
| | 12:23:00 | 65.04 | 64.77 |
| | 12:24:00 | 65.04 | 64.72 |
| | | 65.04 | 64.75 |
| Average field start cs,0 | | 65.06 | 64.84 |
| 30.05.2022 | 08:28:00 | 65.04 | 64.98 |
| | 08:29:00 | 64.98 | 64.98 |
| | 08:30:00 | 65.04 | 65.04 |
| | 08:31:00 | 65.04 | 64.98 |
| | 08:32:00 | 64.98 | 64.98 |
| | aver. cs,1 | 65.02 | 64.99 |
| 13.06.2022 | 07:50:00 | 64.88 | 65.31 |
| | 07:51:00 | 64.88 | 65.31 |
| | 07:52:00 | 64.82 | 65.31 |
| | 07:53:00 | 64.82 | 65.31 |
| | 07:54:00 | 64.77 | 65.25 |
| | aver. cs,1 | 64.83 | 65.30 |
| 27.06.2022 | 07:43:00 | 64.23 | 65.63 |
| | 07:44:00 | 64.23 | 65.63 |
| | 07:45:00 | 64.88 | 65.58 |
| | 07:46:00 | 65.04 | 65.58 |
| | 07:47:00 | 65.09 | 65.58 |
| | aver. cs,1 | 64.69 | 65.60 |
| 11.07.2022 | 08:07:00 | 64.93 | 65.52 |
| | 08:08:00 | 64.93 | 65.47 |
| | 08:09:00 | 64.93 | 65.41 |
| | 08:10:00 | 64.93 | 65.36 |
| | 08:11:00 | 64.93 | 65.31 |
| | aver. cs,1 | 64.93 | 65.41 |
| 25.07.2022 | 07:31:00 | 65.09 | 65.63 |
| | 07:32:00 | 65.15 | 65.58 |
| | 07:33:00 | 65.20 | 65.58 |
| | 07:34:00 | 65.20 | 65.58 |
| | 07:35:00 | 65.25 | 65.52 |
| | aver. cs,1 | 65.18 | 65.58 |
| 08.08.2022 | 07:38:00 | 64.12 | 64.88 |
| | 07:39:00 | 64.12 | 64.88 |
| | 07:40:00 | 64.07 | 64.82 |
| | 07:41:00 | 64.12 | 64.82 |
| | 07:42:00 | 64.07 | 64.77 |
| | aver. Cs,1 | 64.10 | 64.83 |
| 22.08.2022 | 08:31:00 | 63.91 | 65.74 |
| | 08:32:00 | 64.02 | 65.79 |
| | 08:33:00 | 64.02 | 65.84 |
| | 08:34:00 | 64.12 | 65.84 |
| | 08:35:00 | 64.23 | 65.90 |
| | aver. cs,1 | 64.06 | 65.82 |

7.1 8.5.5 Reproducibility standard deviation for CO under field conditions

Reproducibility standard deviation under field conditions shall not exceed 5% of the mean value over a period of three months.

7.2 Test procedures

The reproducibility standard deviation under field conditions is calculated from the measured values averaged every 8 hours during the three-month period.

The difference $\Delta x_{f,i}$ for each (ith) parallel measurement is calculated from:

$$\Delta x_{f,i} = x_{f,1,i} - x_{f,2,i}$$

Where:

$\Delta x_{f,i}$ is the ith difference in a parallel measurement;

$x_{f,1,i}$ is the ith measurement result of analyser 1;

$x_{f,2,i}$ is the ith measurement result of analyser 2;

The reproducibility standard deviation under field conditions is calculated according to:

$$s_{r,f} = \frac{\left(\sqrt{\frac{\sum_{i=1}^n \Delta x_{f,i}^2}{2 * n}} \right)}{c_f} \times 100$$

Where:

$s_{r,f}$ is the reproducibility standard deviation under field conditions (%);

n is the number of parallel measurements;

c_f is the average concentration of carbon monoxide measured during the field test;

The reproducibility standard deviation under field conditions, $s_{r,f}$, shall comply with the performance criterion indicated above.

7.3 Testing

The reproducibility standard deviation under field conditions was calculated from the values averaged every 8 hours over the field test period according to the equation stated above.

As the ambient air in Central Europe usually has a carbon monoxide concentration close to zero, the sample air was enriched with carbon monoxide in various concentrations over a period of 7 days. This served to demonstrate that the measuring systems work identically even at higher concentrations. For the purpose of enrichment, a small amount of highly concentrated test gas was dispensed into the sampling system of the measuring station using a needle valve. Apart from the carbon monoxide concentration, the gas matrix was barely changed with regard to humidity, pressure, temperature and the other measurable air constituents.

7.4 Evaluation

Table 31: Reproducibility standard deviation, all data (8h mean values) from the field test

| reproducibility standard deviation in field | | |
|---|-------------------------|-------------|
| no. of measurements (1h- average) | [n] | 293 |
| average of both analyzers (3 month) | [$\mu\text{mol/mol}$] | 3.15 |
| standard deviation from paired measurements | [$\mu\text{mol/mol}$] | 0.034 |
| reproducibility standard deviation in field $S_{r,f}$ | [%] | 1.08 |
| requirement | $\leq 5,0 \%$ | ✓ |

The reproducibility standard deviation under field conditions is at 1.08% of the average.

7.5 Assessment

The reproducibility standard deviation for carbon monoxide under field conditions was 1.08 % related to the mean value over the duration of the field test of 3 months. Thus, the requirements of EN 14626 are satisfied.

Criterion satisfied? yes

7.6 Detailed presentation of test results

Figure 16 provides an illustration of the reproducibility standard deviation under field conditions.

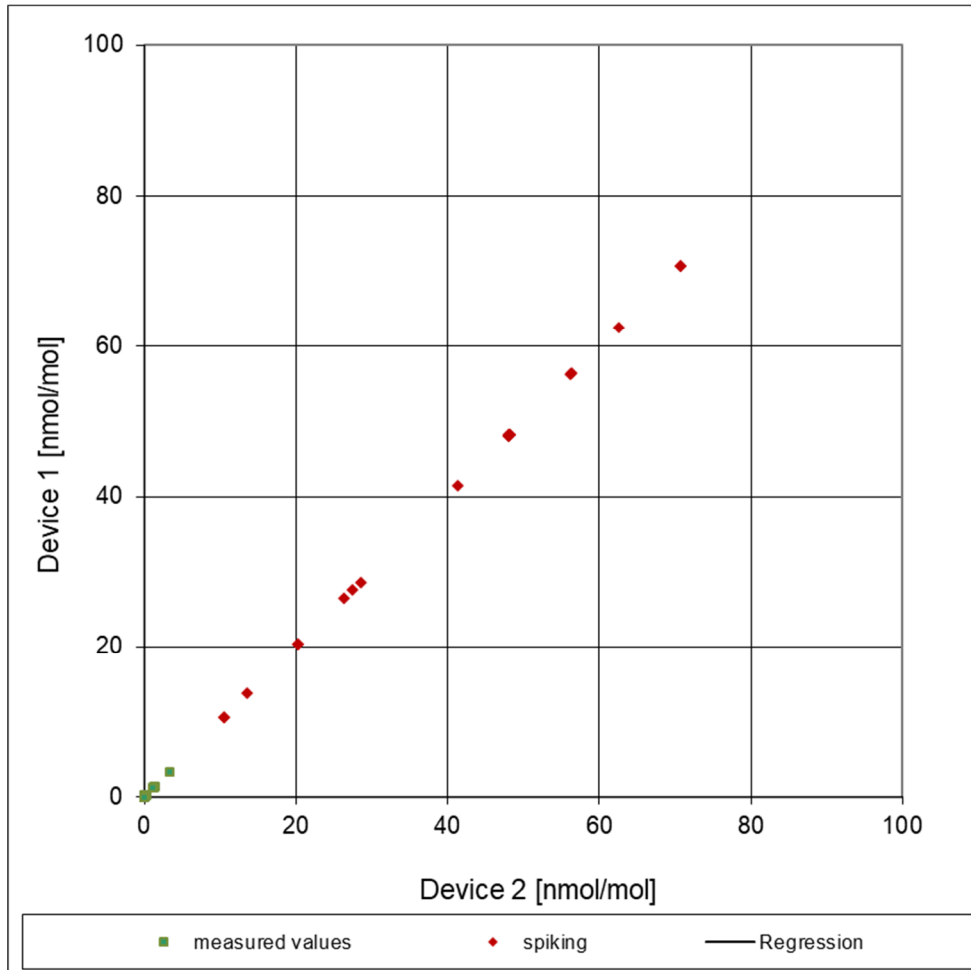


Figure 16: Reproducibility standard deviation under field conditions

7.1 8.5.6 Inspection interval

The period of unattended operation of the AMS shall be at least 2 weeks.

7.2 Equipment

Not required for this performance criterion.

7.3 Testing

With regard to this minimum requirement, the maintenance tasks required in a specific period and the length of that period for the correct functioning of the measuring system were identified. Furthermore, in determining the maintenance interval, the drift determined for zero and span point in accordance with 7.1 8.5.4 Long-term drift have been taken into consideration.

7.4 Evaluation

Over the entire period of the field test, no unacceptable drift was observed. The maintenance interval is thus determined by the necessary maintenance works.

During the three month field test period, maintenance is generally limited to contamination and plausibility checks and potential status/error messages. Naturally, the frequency of filter replacement will depend on the ambient dust concentration at the site of installation. Chapter 5 of the manual and chapter 8 of this report provide information about tasks to be performed in the maintenance interval.

7.5 Assessment

The necessary maintenance tasks determine the period of unattended operation. In essence, these include contamination checks, plausibility checks and checks of potential status/error warnings. The external particle filter needs replacing at the measurement site after having been subjected to dust loading. A check of the zero and span point must be carried out at least every 14 days in accordance with EN 14626.

Criterion satisfied? yes

7.6 Detailed presentation of test results

Not applicable in this instance.

7.1 8.5.7 Period of availability of the analyser

Availability of the analyser shall be at least 90%.

7.2 Test procedures

The correct operation of the analysers shall be checked at least every fourteen days. It is recommended that this check is performed every day during the first fourteen days. These checks consist of plausibility checks on the measured values, as well as, when available, on status signals and other relevant parameters. Time, duration and nature of any malfunctioning shall be logged.

The total time period with useable measuring data is the period during the field test during which valid measuring data of the ambient air concentrations are obtained. In this time period, the time needed for calibrations, conditioning of sample systems and filters and maintenance shall not be included.

The availability of the analyser is calculated as:

$$A_a = \frac{t_u}{t_t} * 100$$

Where:

A_a is the availability of the analyser (%);

t_u is the total time period with validated measuring data;

t_t is the time period of the field test minus the time for calibration, conditioning and maintenance, t_u and t_t shall be expressed in the same units.

The availability shall comply with the performance criterion indicated above.

7.3 Testing

Using the equation given above, the availability was calculated from the total period of the field test and the outage times which occurred during this period.

Evaluation

Outage times which occurred during the field test are listed in Table 32.

Table 32: Availability of the N300 measuring system

| | | System 1 | System 2 |
|--|---|----------|----------|
| Operation time | h | 2344 | 2344 |
| Outage time | h | 0 | 0 |
| Maintenance time | h | 8 | 8 |
| Actual operating time: | h | 2336 | 2336 |
| Actual operating time incl. maintenance times: | h | 2344 | 2344 |
| Availability | % | 100 | 100 |

The maintenance times result from the fortnightly test gas applications to determine the drift behaviour and the maintenance interval.

7.5 Assessment

The availability was at 100%. Thus, the requirement of EN 14626 is satisfied.

Criterion satisfied? yes

7.6 Detailed presentation of test results

Not applicable.

7.1 8.6 Calculation of the total uncertainty in accordance with standard EN 14626 (2012)

The type approval of the analyser consists of the following steps:

- 1) The value of each individual performance characteristic tested in the laboratory shall fulfil the criterion stated in Table E.1 of standard EN 14626.*
- 2) The expanded uncertainty calculated from the standard uncertainties due to the values of the specific performance characteristics obtained in the laboratory tests shall fulfil the criterion as stated in Annex I of Directive 2008/50/EC (15% for fixed measurements or 25% for indicative measurements). This criterion is the maximum uncertainty of individual measurements for continuous measurements at the 8-hour limit value. The relevant specific performance characteristics and the calculation procedure are given in Annex E of standard EN 14626.*
- 3) The value of each of the individual performance characteristics tested in the field shall fulfil the criterion stated in Table E.1 of EN 14626.*
- 4) The expanded uncertainty calculated from the standard uncertainties due to the values of the specific performance characteristics obtained in the laboratory and field tests shall fulfil the criterion as stated in Annex I of Directive 2008/50/EC (15% for fixed measurements or 25% for indicative measurements). This criterion is the maximum uncertainty of individual measurements for continuous measurements at the 8-hour limit value. The relevant specific performance characteristics and the calculation procedure are given in Annex E of standard EN 14626.*

7.2 Equipment

Calculation of the total uncertainty in accordance with standard EN 14626 (2012), Annex E

7.3 Testing

At the end of the performance test, the total uncertainties were calculated from the values obtained during the test.

7.4 Evaluation

Regarding 1) The value of each performance characteristic tested in the laboratory tests fulfils the criterion stated in Table E.1 of EN 14626.

Regarding 2) The expanded uncertainty calculated from the standard uncertainties due to the values of the specific performance characteristics obtained in the laboratory tests fulfils the criterion as stated.

Regarding 3) The value of each performance characteristic tested in the field tests fulfils the criterion stated in Table E.1 of EN 14626.

Regarding 4) The expanded uncertainty calculated from the standard uncertainties due to the values of the specific performance characteristics obtained in the laboratory and field tests fulfils the criterion as stated.

7.5 Assessment

The requirement regarding the expanded uncertainty of the measuring system is complied with.

Criterion satisfied? yes

7.6 Detailed presentation of test results

Table 33 summarises the results for items 1 and 3.

Table 36 contains the results regarding item 2.

Table 35 and Table 37 contain the results regarding item 4.

Table 33: Relevant performance characteristics and criteria according to EN 14626

| Performance characteristic | Performance criterion | Test result | Satisfied | Page |
|--|--|--|-----------|------|
| 8.4.5 Repeatability standard deviation at zero | $\leq 0.3 \mu\text{mol/mol}$ | S _r System 1: 0.03 $\mu\text{mol/mol}$ S _r System 2: 0.03 $\mu\text{mol/mol}$ | yes | 84 |
| 8.4.5 Repeatability standard deviation at concentration level c _t | $\leq 0.4 \mu\text{mol/mol}$ | S _r system 1: 0.05 $\mu\text{mol/mol}$ S _r System 2: 0.05 $\mu\text{mol/mol}$ | yes | 84 |
| 8.4.6 Lack-of-fit (deviation from the linear regression) | Largest deviation from the linear regression function at concentrations greater than zero, $\leq 4.0\%$ of the reading Deviation at zero $\leq 0.5 \mu\text{mol/mol}$ | X _{l,z} System 1: ZP -0.01 $\mu\text{mol/mol}$ X _l System 1: RP 2.25% X _{l,z} System 2: ZP 0.16 $\mu\text{mol/mol}$ X _l System 2: RP 2.21% | yes | 87 |
| 8.4.7 Sensitivity coefficient of sample gas pressure | $\leq 0.70 \mu\text{mol/mol/kPa}$ | b _{gp} System 1: 0.11 $\mu\text{mol/mol/kPa}$ b _{gp} System 2: 0.02 $\mu\text{mol/mol/kPa}$ | yes | 92 |
| 8.4.8 Sensitivity coefficient of sample gas temperature | $\leq 0.3 \mu\text{mol/mol/K}$ | b _{gt} System 1: 0.00 $\mu\text{mol/mol/K}$ b _{gt} System 2: 0.00 $\mu\text{mol/mol/K}$ | yes | 94 |
| 8.4.9 Sensitivity coefficient of surrounding temperature | $\leq 0.3 \mu\text{mol/mol/K}$ | b _{st} System 1: 0.076 $\mu\text{mol/mol/K}$ b _{st} System 2: 0.064 $\mu\text{mol/mol/K}$ | yes | 96 |
| 8.4.10 Sensitivity coefficient of electrical voltage | $\leq 0.3 \mu\text{mol/mol/V}$ | b _v System 1: 0.00 $\mu\text{mol/mol/V}$ b _v System 2: 0.00 $\mu\text{mol/mol/V}$ | yes | 99 |
| 8.4.11 Interferent at zero and at concentration level c _t | H ₂ O $\leq 1.0 \mu\text{mol/mol}$ CO ₂ $\leq 0.5 \mu\text{mol/mol}$ NO $\leq 0.5 \mu\text{mol/mol}$ NO ₂ $\leq 0.5 \mu\text{mol/mol}$ | H ₂ O System 1: ZP -0.02 $\mu\text{mol/mol}$ / RP -0.27 $\mu\text{mol/mol}$ System 2: ZP -0.11 $\mu\text{mol/mol}$ / RP -0.14 $\mu\text{mol/mol}$ CO ₂ System 1: ZP 0.00 $\mu\text{mol/mol}$ / RP -0.06 $\mu\text{mol/mol}$ System 2: ZP 0.17 $\mu\text{mol/mol}$ / RP 0.05 $\mu\text{mol/mol}$ NO System 1: ZP 0.00 $\mu\text{mol/mol}$ / RP -0.02 $\mu\text{mol/mol}$ System 2: ZP 0.00 $\mu\text{mol/mol}$ / RP 0.06 $\mu\text{mol/mol}$ NO ₂ System 1: ZP 0.02 $\mu\text{mol/mol}$ / RP -0.13 $\mu\text{mol/mol}$ System 2: ZP 0.05 $\mu\text{mol/mol}$ / RP -0.09 $\mu\text{mol/mol}$ | yes | 101 |

| Performance characteristic | Performance criterion | Test result | Satisfied | Page |
|---|---|--|-----------|------|
| 8.4.12 Averaging effect | $\leq 7.0\%$ of the measured value | E_{av} System 1: 4.3% E_{av} System 2: 5.8% | yes | 104 |
| 8.4.13 Difference sample/calibration port | $\leq 1.0\%$ | Δ_{SC} System 1: 0.14% Δ_{SC} System 2: -0.06% | yes | 107 |
| 8.4.3 Response time (rise) | ≤ 180 s | t_r System 1: 42 s t_r System 2: 40 s | yes | 76 |
| 8.4.3 Response time (fall) | ≤ 180 s | t_f System 1: 41 s t_f System 2: 41 s | yes | 76 |
| 8.4.3 Difference between the rise and fall response time | ≤ 10 % relative difference or 10 s, whichever is greater | t_d System 1: 1.0 s t_d System 2: -1.0 s | yes | 76 |
| 8.5.7 Availability of the analyser | $> 90\%$ | A_a System 1: 100% A_a System 2: 100% | yes | 116 |
| 8.5.5 Reproducibility standard deviation under field conditions | $\leq 5.0\%$ of the average over a period of 3 months | $S_{r,f}$ System 1: 1.08% $S_{r,f}$ System 2: 1.08% | yes | 112 |
| 8.5.4 Long-term drift at zero point | ≤ 0.50 $\mu\text{mol/mol}$ | $D_{l,z}$ System 1: 0.02 $\mu\text{mol/mol}$ $D_{l,z}$ System 2: 0.04 $\mu\text{mol/mol}$ | yes | 109 |
| 8.5.4 Long-term drift at span level | $\leq 5.0\%$ of the upper limit of the certification range | $D_{l,s}$ System 1: -1.56% $D_{l,s}$ System 2: 1.56% | yes | 109 |
| 8.4.4 Short-term drift at zero | ≤ 0.10 $\mu\text{mol/mol}$ over 12 h | $D_{s,z}$ System 1: 0.05 $\mu\text{mol/mol}$ $D_{s,z}$ System 2: 0.00 $\mu\text{mol/mol}$ | yes | 80 |
| 8.4.4 Short-term drift at span level | ≤ 0.60 $\mu\text{mol/mol}$ over 12 h | $D_{s,s}$ System 1: 0.17 $\mu\text{mol/mol}$ $D_{s,s}$ System 2: 0.31 $\mu\text{mol/mol}$ | yes | 80 |

Report on the performance test of the N300 ambient air quality measuring system manufactured by Teledyne API for the component carbon monoxide, Report no.: 936/21255654/B

Table 34: Expanded uncertainty. Laboratory test for system 1

| Measuring device: | | N300 | | Serial-No.: | | 54 | |
|--------------------------------------|--|--|------------------|---------------------|-------|-------------------------------|---------------------|
| Measured component: | | CO | | 8h-limit value: | | 8.62 $\mu\text{mol/mol}$ | |
| No. | Performance characteristic | Performance criterion | Result | Partial uncertainty | | Square of partial uncertainty | |
| 1 | Repeatability standard deviation at zero | $\leq 0.3 \mu\text{mol/mol}$ | 0.030 | $u_{r,z}$ | 0.01 | 0.0000 | |
| 2 | Repeatability standard deviation at 8h-limit value | $\leq 0.4 \mu\text{mol/mol}$ | 0.050 | u_r | 0.01 | 0.0001 | |
| 3 | "lack of fit" at 8h-limit value | $\leq 4.0\%$ of measured value | 2.250 | u_f | 0.11 | 0.0125 | |
| 4 | Sensitivity coefficient of sample gas pressure at 8h-limit value | $\leq 0.7 \mu\text{mol/mol/kPa}$ | 0.110 | u_{sp} | 0.25 | 0.0638 | |
| 5 | Sensitivity coefficient of sample gas temperature at 8h-limit value | $\leq 0.3 \mu\text{mol/mol/K}$ | 0.000 | u_{st} | 0.00 | 0.0000 | |
| 6 | Sensitivity coefficient of surrounding temperature at 8h-limit value | $\leq 0.3 \mu\text{mol/mol/K}$ | 0.076 | u_{st} | 0.17 | 0.0305 | |
| 7 | Sensitivity coefficient of electrical voltage at 8h-limit value | $\leq 0.3 \mu\text{mol/mol/V}$ | 0.000 | u_v | 0.00 | 0.0000 | |
| 8a | Interferent H ₂ O with 19 mmol/mol | $\leq 1.0 \mu\text{mol/mol}$ (Zero) $\leq 1.0 \mu\text{mol/mol}$ (Span) | -0.270 -0.020 | u_{H_2O} | -0.20 | 0.0408 | |
| 8b | Interferent CO ₂ with 500 $\mu\text{mol/mol}$ | $\leq 0.5 \mu\text{mol/mol}$ (Zero) $\leq 0.5 \mu\text{mol/mol}$ (Span) | 0.000 -0.060 | $u_{int, pos}$ | 0.12 | 0.0148 | |
| 8c | Interferent NO with 1 $\mu\text{mol/mol}$ | $\leq 0.5 \mu\text{mol/mol}$ (Zero) $\leq 0.5 \mu\text{mol/mol}$ (Span) | 0.000 -0.020 | or | | | |
| 8d | Interferent N ₂ O with 50 nmol/mol | $\leq 0.5 \mu\text{mol/mol}$ (Zero) $\leq 0.5 \mu\text{mol/mol}$ (Span) | 0.020 -0.130 | $u_{int, neg}$ | | | |
| 9 | Averaging effect | $\leq 7.0\%$ of measured value | 4.300 | u_{av} | | | |
| 18 | Difference sample/calibration port | $\leq 1.0\%$ | 0.140 | u_{sc} | 0.01 | 0.0001 | |
| 21 | Uncertainty of test gas | $\leq 3.0\%$ | 2.000 | u_{tg} | 0.09 | 0.0074 | |
| Combined standard uncertainty | | | | u_c | | 0.4647 | $\mu\text{mol/mol}$ |
| Expanded uncertainty | | | | U | | 0.9293 | $\mu\text{mol/mol}$ |
| Relative expanded uncertainty | | | | W | | 10.78 | % |
| Maximum allowed expanded uncertainty | | | | W_{req} | | 15 | % |

Table 35: Expanded uncertainty. Laboratory and field tests for system 1

| Measuring device: | | N300 | | Serial-No.: | | 54 | |
|--------------------------------------|--|--|------------------|---------------------|---|-------------------------------|---------------------|
| Measured component: | | CO | | 8h-limit value: | | 8.62 $\mu\text{mol/mol}$ | |
| No. | Performance characteristic | Performance criterion | Result | Partial uncertainty | | Square of partial uncertainty | |
| 1 | Repeatability standard deviation at zero | $\leq 0.3 \mu\text{mol/mol}$ | 0.030 | $u_{r,z}$ | 0.01 | 0.0000 | |
| 2 | Repeatability standard deviation at 8h-limit value | $\leq 0.4 \mu\text{mol/mol}$ | 0.050 | u_r | not considered, as $u_r = 0.01 < u_{r,f}$ | - | |
| 3 | "lack of fit" at 8h-limit value | $\leq 4.0\%$ of measured value | 2.250 | u_f | 0.11 | 0.0125 | |
| 4 | Sensitivity coefficient of sample gas pressure at 8h-limit value | $\leq 0.7 \mu\text{mol/mol/kPa}$ | 0.110 | u_{sp} | 0.25 | 0.0638 | |
| 5 | Sensitivity coefficient of sample gas temperature at 8h-limit value | $\leq 0.3 \mu\text{mol/mol/K}$ | 0.000 | u_{st} | 0.00 | 0.0000 | |
| 6 | Sensitivity coefficient of surrounding temperature at 8h-limit value | $\leq 0.3 \mu\text{mol/mol/K}$ | 0.076 | u_{st} | 0.17 | 0.0305 | |
| 7 | Sensitivity coefficient of electrical voltage at 8h-limit value | $\leq 0.3 \mu\text{mol/mol/V}$ | 0.000 | u_v | 0.00 | 0.0000 | |
| 8a | Interferent H ₂ O with 19 mmol/mol | $\leq 1.0 \mu\text{mol/mol}$ (Zero) $\leq 1.0 \mu\text{mol/mol}$ (Span) | -0.020 -0.270 | u_{H_2O} | -0.20 | 0.0408 | |
| 8b | Interferent CO ₂ with 500 $\mu\text{mol/mol}$ | $\leq 0.5 \mu\text{mol/mol}$ (Zero) $\leq 0.5 \mu\text{mol/mol}$ (Span) | 0.000 -0.060 | $u_{int, pos}$ | 0.12 | 0.0148 | |
| 8c | Interferent NO with 1 $\mu\text{mol/mol}$ | $\leq 0.5 \mu\text{mol/mol}$ (Zero) $\leq 0.5 \mu\text{mol/mol}$ (Span) | 0.000 -0.020 | or | | | |
| 8d | Interferent N ₂ O with 50 nmol/mol | $\leq 0.5 \mu\text{mol/mol}$ (Zero) $\leq 0.5 \mu\text{mol/mol}$ (Span) | 0.020 -0.130 | $u_{int, neg}$ | | | |
| 9 | Averaging effect | $\leq 7.0\%$ of measured value | 4.300 | u_{av} | | | |
| 10 | Reproducibility standard deviation under field conditions | $\leq 5.0\%$ of average over 3 months | 1.080 | $u_{r,f}$ | 0.09 | 0.0087 | |
| 11 | Long term drift at zero level | $\leq 0.5 \mu\text{mol/mol}$ | 0.020 | $u_{d,z}$ | 0.01 | 0.0001 | |
| 12 | Long term drift at span level | $\leq 5.0\%$ of max. of certification range | -1.560 | $u_{d,span}$ | -0.08 | 0.0060 | |
| 18 | Difference sample/calibration port | $\leq 1.0\%$ | 0.140 | u_{sc} | 0.01 | 0.0001 | |
| 21 | Uncertainty of test gas | $\leq 3.0\%$ | 2.000 | u_{tg} | 0.09 | 0.0074 | |
| Combined standard uncertainty | | | | u_c | | 0.4802 | $\mu\text{mol/mol}$ |
| Expanded uncertainty | | | | U | | 0.9605 | $\mu\text{mol/mol}$ |
| Relative expanded uncertainty | | | | W | | 11.14 | % |
| Maximum allowed expanded uncertainty | | | | W_{req} | | 15 | % |

Table 36: Expanded uncertainty. Laboratory test for system 2

| Measuring device: | | N300 | | Serial-No.: | | 55 | |
|--------------------------------------|--|-------------------------------------|--------|--------------------------|-------|-------------------------------|---------------------|
| Measured component: | | CO | | 8h-limit value: | | 8.62 $\mu\text{mol/mol}$ | |
| No. | Performance characteristic | Performance criterion | Result | Partial uncertainty | | Square of partial uncertainty | |
| 1 | Repeatability standard deviation at zero | $\leq 0.3 \mu\text{mol/mol}$ | 0.030 | $u_{r,z}$ | 0.01 | 0.0000 | |
| 2 | Repeatability standard deviation at 8h-limit value | $\leq 0.4 \mu\text{mol/mol}$ | 0.050 | u_r | 0.01 | 0.0001 | |
| 3 | "lack of fit" at 8h-limit value | $\leq 4.0\%$ of measured value | 2.210 | u_l | 0.11 | 0.0121 | |
| 4 | Sensitivity coefficient of sample gas pressure at 8h-limit value | $\leq 0.7 \mu\text{mol/mol/kPa}$ | 0.020 | u_{gp} | 0.05 | 0.0021 | |
| 5 | Sensitivity coefficient of sample gas temperature at 8h-limit value | $\leq 0.3 \mu\text{mol/mol/K}$ | 0.000 | u_{gt} | 0.00 | 0.0000 | |
| 6 | Sensitivity coefficient of surrounding temperature at 8h-limit value | $\leq 0.3 \mu\text{mol/mol/K}$ | 0.064 | u_{st} | 0.15 | 0.0216 | |
| 7 | Sensitivity coefficient of electrical voltage at 8h-limit value | $\leq 0.3 \mu\text{mol/mol/V}$ | 0.000 | u_v | 0.00 | 0.0000 | |
| 8a | Interferent H_2O with 19 mmol/mol | $\leq 1.0 \mu\text{mol/mol}$ (Zero) | -0.140 | $u_{\text{H}_2\text{O}}$ | -0.10 | 0.0109 | |
| | | $\leq 1.0 \mu\text{mol/mol}$ (Span) | -0.110 | | | | |
| 8b | Interferent CO_2 with 500 $\mu\text{mol/mol}$ | $\leq 0.5 \mu\text{mol/mol}$ (Zero) | 0.170 | $u_{\text{int, pos}}$ | 0.06 | 0.0040 | |
| | | $\leq 0.5 \mu\text{mol/mol}$ (Span) | 0.050 | | | | |
| 8c | Interferent NO with 1 $\mu\text{mol/mol}$ | $\leq 0.5 \mu\text{mol/mol}$ (Zero) | 0.000 | or | | | |
| | | $\leq 0.5 \mu\text{mol/mol}$ (Span) | 0.060 | | | | |
| 8d | Interferent N_2O with 50 nmol/mol | $\leq 0.5 \mu\text{mol/mol}$ (Zero) | 0.050 | $u_{\text{int, neg}}$ | | | |
| | | $\leq 0.5 \mu\text{mol/mol}$ (Span) | -0.090 | | | | |
| 9 | Averaging effect | $\leq 7.0\%$ of measured value | 5.800 | u_{av} | 0.29 | 0.0833 | |
| 18 | Difference sample/calibration port | $\leq 1.0\%$ | -0.060 | u_{ssc} | -0.01 | 0.0000 | |
| 21 | Uncertainty of test gas | $\leq 3.0\%$ | 2.000 | u_{cg} | 0.09 | 0.0074 | |
| Combined standard uncertainty | | | | u_c | | 0.3764 | $\mu\text{mol/mol}$ |
| Expanded uncertainty | | | | U | | 0.7528 | $\mu\text{mol/mol}$ |
| Relative expanded uncertainty | | | | W | | 8.73 | % |
| Maximum allowed expanded uncertainty | | | | W_{req} | | 15 | % |

Table 37: Expanded uncertainty. Laboratory and field tests for system 2

| Measuring device: | | N300 | | Serial-No.: | | 55 | |
|--------------------------------------|--|---|--------|--------------------------|---|-------------------------------|---------------------|
| Measured component: | | CO | | 8h-limit value: | | 8.62 $\mu\text{mol/mol}$ | |
| No. | Performance characteristic | Performance criterion | Result | Partial uncertainty | | Square of partial uncertainty | |
| 1 | Repeatability standard deviation at zero | $\leq 0.3 \mu\text{mol/mol}$ | 0.030 | $u_{r,z}$ | 0.01 | 0.0000 | |
| 2 | Repeatability standard deviation at 8h-limit value | $\leq 0.4 \mu\text{mol/mol}$ | 0.050 | u_r | not considered, as $u_r = 0,01 < u_{r,f}$ | - | |
| 3 | "lack of fit" at 8h-limit value | $\leq 4.0\%$ of measured value | 2.210 | u_l | 0.11 | 0.0121 | |
| 4 | Sensitivity coefficient of sample gas pressure at 8h-limit value | $\leq 0.7 \mu\text{mol/mol/kPa}$ | 0.020 | u_{gp} | 0.05 | 0.0021 | |
| 5 | Sensitivity coefficient of sample gas temperature at 8h-limit value | $\leq 0.3 \mu\text{mol/mol/K}$ | 0.000 | u_{gt} | 0.00 | 0.0000 | |
| 6 | Sensitivity coefficient of surrounding temperature at 8h-limit value | $\leq 0.3 \mu\text{mol/mol/K}$ | 0.064 | u_{st} | 0.15 | 0.0216 | |
| 7 | Sensitivity coefficient of electrical voltage at 8h-limit value | $\leq 0.3 \mu\text{mol/mol/V}$ | 0.000 | u_v | 0.00 | 0.0000 | |
| 8a | Interferent H_2O with 19 mmol/mol | $\leq 1.0 \mu\text{mol/mol}$ (Zero) | -0.110 | $u_{\text{H}_2\text{O}}$ | -0.10 | 0.0109 | |
| | | $\leq 1.0 \mu\text{mol/mol}$ (Span) | -0.140 | | | | |
| 8b | Interferent CO_2 with 500 $\mu\text{mol/mol}$ | $\leq 0.5 \mu\text{mol/mol}$ (Zero) | 0.170 | $u_{\text{int, pos}}$ | 0.06 | 0.0040 | |
| | | $\leq 0.5 \mu\text{mol/mol}$ (Span) | 0.050 | | | | |
| 8c | Interferent NO with 1 $\mu\text{mol/mol}$ | $\leq 0.5 \mu\text{mol/mol}$ (Zero) | 0.000 | or | | | |
| | | $\leq 0.5 \mu\text{mol/mol}$ (Span) | 0.060 | | | | |
| 8d | Interferent N_2O with 50 nmol/mol | $\leq 0.5 \mu\text{mol/mol}$ (Zero) | 0.050 | $u_{\text{int, neg}}$ | | | |
| | | $\leq 0.5 \mu\text{mol/mol}$ (Span) | -0.090 | | | | |
| 9 | Averaging effect | $\leq 7.0\%$ of measured value | 5.800 | u_{av} | 0.29 | 0.0833 | |
| 10 | Reproducibility standard deviation under field conditions | $\leq 5.0\%$ of average over 3 months | 1.080 | $u_{r,f}$ | 0.09 | 0.0087 | |
| 11 | Long term drift at zero level | $\leq 0.5 \mu\text{mol/mol}$ | 0.040 | $u_{d,z}$ | 0.02 | 0.0005 | |
| 12 | Long term drift at span level | $\leq 5.0\%$ of max. of certification range | 1.560 | $u_{d,s,8h}$ | 0.08 | 0.0060 | |
| 18 | Difference sample/calibration port | $\leq 1.0\%$ | -0.060 | u_{ssc} | -0.01 | 0.0000 | |
| 21 | Uncertainty of test gas | $\leq 3.0\%$ | 2.000 | u_{cg} | 0.09 | 0.0074 | |
| Combined standard uncertainty | | | | u_c | | 0.3960 | $\mu\text{mol/mol}$ |
| Expanded uncertainty | | | | U | | 0.7920 | $\mu\text{mol/mol}$ |
| Relative expanded uncertainty | | | | W | | 9.19 | % |
| Maximum allowed expanded uncertainty | | | | W_{req} | | 15 | % |

8. Recommendations for use in practice


Work in the maintenance interval

The tested measuring systems require regular performance of the following tasks:

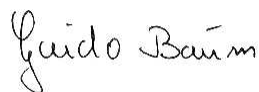
- Regular visual inspections/telemetric inspections
- System status checks
- System display checks for error messages
- Replacement of the internal Teflon filter/DFU filter at the sample gas inlet depending on the conditions at the measuring site
- Zero and span checks performed using suitable test gases every two weeks in accordance with standard EN 14626

Other than that, follow the manufacturer's instructions indicated in the user manual.

Environmental Protection/Air Pollution Control



Dipl.-Ing. Martin Schneider



Dipl.-Ing. Guido Baum

Cologne, 25 January 2023
936/21255654/B

9. Bibliography

- [1] VDI 4202 part 1: Performance test, declaration of suitability, and certification of point-related measuring systems for gaseous air pollutants, April 2018
- [2] European standard EN 14626: Ambient air - Standard method for the measurement of the concentration of carbon monoxide by non-dispersive infrared spectroscopy, December 2012
- [3] Directive 2008/50/EG of the European Parliament and of the Council of 21 May 2008 on ambient air quality and cleaner air for Europe.

10. Annex

| | |
|-------------------|---|
| Appendix 1 | Certificate of Accreditation to EN ISO/IEC 17025:2018 |
| Appendix 2 | Weather data during field testing |
| Appendix 3 | Results of the "Sensitivity of sample gas pressure" test with the unregulated pump |
| Appendix 4 | Results of the test with an alternative particulate filter |
| Appendix 5 | Manual |

Appendix 1:



Akkreditierung



Die Deutsche Akkreditierungsstelle bestätigt mit dieser **Teil-Akkreditierungsurkunde**, dass das Prüflaboratorium

TÜV Rheinland Energy GmbH
Am Grauen Stein, 51105 Köln

die Mindestanforderungen gemäß DIN EN ISO/IEC 17025:2018 für die in der Anlage zu dieser Urkunde aufgeführten Konformitätsbewertungstätigkeiten erfüllt.
Dies schließt zusätzliche bestehende gesetzliche und normative Anforderungen ein, einschließlich solcher in relevanten sektoralen Programmen.

Die Anforderungen an das Managementsystem in der DIN EN ISO/IEC 17025 sind in einer für Prüflaboratorien relevanten Sprache verfasst und stehen insgesamt in Übereinstimmung mit den Prinzipien der DIN EN ISO 9001.

Diese Akkreditierung wurde gemäß Art. 5 Abs. 1 Satz 2 VO (EG) 765/2008, nach Durchführung eines Akkreditierungsverfahrens unter Beachtung der Mindestanforderungen der DIN EN ISO/IEC 17011 und auf Grundlage einer Bewertung und Entscheidung durch den eingesetzten Akkreditierungsausschuss ausgestellt.

Diese Teil-Akkreditierungsurkunde gilt nur in Verbindung mit dem Bescheid vom 18.11.2022 mit der Akkreditierungsnummer D-PL-11120-02.
Sie besteht aus diesem Deckblatt, der Rückseite des Deckblatts und der folgenden Anlage mit insgesamt 33 Seiten.

Registrierungsnummer der Teil-Akkreditierungsurkunde: **D-PL-1112-02-01**
Sie ist Bestandteil der Akkreditierungsurkunde D-PL-11120-02-00.

Berlin, 18.11.2022

Im Auftrag Dr. Hejke Manke
Abteilungsleitung



Diese Urkunde gibt den Stand zum Zeitpunkt des Ausstellungsdatums wieder. Der jeweils aktuelle Stand der gültigen und überwachten Akkreditierung ist der Datenbank akkreditierter Stellen der Deutschen Akkreditierungsstelle zu entnehmen (www.dakks.de).

Siehe Hinweise auf der Rückseite

Figure 17: Certificate of accreditation according to EN ISO/IEC 17025:2018 - page 1

Deutsche Akkreditierungsstelle

Standort Berlin
Spittelmarkt 10
10117 Berlin

Standort Frankfurt am Main
Europa-Allee 52
60327 Frankfurt am Main

Standort Braunschweig
Bundesallee 100
38116 Braunschweig

Die Deutsche Akkreditierungsstelle GmbH (DAkkS) ist die beliehene nationale Akkreditierungsstelle der Bundesrepublik Deutschland gemäß § 8 Absatz 1 AkkStelleG i. V. m. § 1 Absatz 1 AkkStelleGBV. Die DAkkS ist als nationale Akkreditierungsbehörde gemäß Art. 4 Abs. 4 VO (EG) 765/2008 und Tz. 4.7 DIN EN ISO/IEC 17000 durch Deutschland benannt.

Die Akkreditierungsurkunde ist gemäß Art. 11 Abs. 2 VO (EG) 765/2008 im Geltungsbereich dieser Verordnung von den nationalen Behörden als gleichwertig anzuerkennen sowie von den WTO-Mitgliedsstaaten, die sich in bilateralen- oder multilateralen Gegenseitigkeitsabkommen verpflichtet haben, die Urkunden von Akkreditierungsstellen, die Mitglied bei ILAC oder IAF sind, als gleichwertig anzuerkennen.

Die DAkkS ist Unterzeichnerin der Multilateralen Abkommen zur gegenseitigen Anerkennung der European co-operation for Accreditation (EA), des International Accreditation Forum (IAF) und der International Laboratory Accreditation Cooperation (ILAC).

Der aktuelle Stand der Mitgliedschaft kann folgenden Webseiten entnommen werden:

EA: www.european-accreditation.org

ILAC: www.ilac.org

IAF: www.iaf.nu

Diese Akkreditierungsurkunde ist Eigentum der Deutschen Akkreditierungsstelle.

Figure 17: Certificate of accreditation according to EN ISO/IEC 17025:2018 - page 2

Appendix 2:

Table 38: Weather data (daily averages), May 2022

| May 2022 | Date | Avg. Air temperature [°C] | Rel. Humidity [%] | Air pressure [hPa] |
|----------|------------|---------------------------|-------------------|--------------------|
| 17 | 17.05.2022 | 19.3 | 71.3 | 1014.4 |
| 18 | 18.05.2022 | 23.5 | 56.1 | 1014.1 |
| 19 | 19.05.2022 | 20.9 | 71.6 | 1012.9 |
| 20 | 20.05.2022 | 18.8 | 84.6 | 1012.5 |
| 21 | 21.05.2022 | 15.8 | 66.0 | 1015.3 |
| 22 | 22.05.2022 | 17.6 | 62.9 | 1009.3 |
| 23 | 23.05.2022 | 18.3 | 75.9 | 997.2 |
| 24 | 24.05.2022 | 14.6 | 80.1 | 1001.1 |
| 25 | 25.05.2022 | 15.6 | 63.3 | 1009.8 |
| 26 | 26.05.2022 | 18.1 | 62.4 | 1014.7 |
| 27 | 27.05.2022 | 15.8 | 69.2 | 1015.2 |
| 28 | 28.05.2022 | 13.3 | 59.0 | 1014.6 |
| 29 | 29.05.2022 | 10.4 | 78.1 | 1009.4 |
| 30 | 30.05.2022 | 11.7 | 75.4 | 1007.6 |
| 31 | 31.05.2022 | 13.7 | 67.6 | 1007.3 |

Report on the performance test of the N300 ambient air quality measuring system manufactured by Teledyne API for the component carbon monoxide, Report no.: 936/21255654/B

Table 39: Weather data (daily averages), June 2022

| June 2022 | Date | Avg. Air temperature [°C] | Rel. Humidity [%] | Air pressure [hPa] |
|-----------|------------|---------------------------|-------------------|--------------------|
| 1 | 01.06.2022 | 14.0 | 66.7 | 1009.7 |
| 2 | 02.06.2022 | 15.2 | 60.9 | 1014.4 |
| 3 | 03.06.2022 | 18.7 | 59.7 | 1011.0 |
| 4 | 04.06.2022 | 20.8 | 65.7 | 1011.7 |
| 5 | 05.06.2022 | 19.1 | 79.0 | 1008.0 |
| 6 | 06.06.2022 | 18.3 | 66.6 | 1009.3 |
| 7 | 07.06.2022 | 16.8 | 78.0 | 1007.8 |
| 8 | 08.06.2022 | 16.0 | 90.3 | 1003.2 |
| 9 | 09.06.2022 | 16.2 | 78.6 | 1009.0 |
| 10 | 10.06.2022 | 18.2 | 71.0 | 1016.2 |
| 11 | 11.06.2022 | 21.5 | 66.6 | 1016.1 |
| 12 | 12.06.2022 | 19.8 | 59.3 | 1015.9 |
| 13 | 13.06.2022 | 17.0 | 60.6 | 1015.9 |
| 14 | 14.06.2022 | 17.2 | 56.1 | 1015.7 |
| 15 | 15.06.2022 | 20.7 | 56.4 | 1011.4 |
| 16 | 16.06.2022 | 20.6 | 52.5 | 1014.5 |
| 17 | 17.06.2022 | 23.0 | 52.5 | 1016.7 |
| 18 | 18.06.2022 | 28.4 | 44.4 | 1009.9 |
| 19 | 19.06.2022 | 21.4 | 61.6 | 1003.6 |
| 20 | 20.06.2022 | 16.2 | 77.8 | 1008.8 |
| 21 | 21.06.2022 | 17.2 | 67.2 | 1008.4 |
| 22 | 22.06.2022 | 21.0 | 58.4 | 1005.6 |
| 23 | 23.06.2022 | 25.0 | 58.7 | 1004.5 |
| 24 | 24.06.2022 | 20.6 | 83.5 | 1001.8 |
| 25 | 25.06.2022 | 21.6 | 67.3 | 1005.5 |
| 26 | 26.06.2022 | 18.3 | 83.8 | 1009.0 |
| 27 | 27.06.2022 | 17.9 | 84.1 | 1010.7 |
| 28 | 28.06.2022 | 18.9 | 67.1 | 1014.3 |
| 29 | 29.06.2022 | 20.9 | 65.2 | 1008.0 |
| 30 | 30.06.2022 | 21.5 | 71.3 | 1005.3 |

Table 40: Weather data (daily averages), July 2022

| July 2022 | Date | Avg. Air temperature [°C] | Rel. Humidity [%] | Air pressure [hPa] |
|-----------|------------|---------------------------|-------------------|--------------------|
| 1 | 01.07.2022 | 17.6 | 70.5 | 1012.3 |
| 2 | 02.07.2022 | 20.4 | 57.0 | 1014.6 |
| 3 | 03.07.2022 | 21.1 | 58.2 | 1011.9 |
| 4 | 04.07.2022 | 19.8 | 55.1 | 1014.1 |
| 5 | 05.07.2022 | 19.8 | 58.2 | 1015.8 |
| 6 | 06.07.2022 | 17.5 | 58.8 | 1018.8 |
| 7 | 07.07.2022 | 18.2 | 67.8 | 1016.8 |
| 8 | 08.07.2022 | 19.2 | 59.7 | 1023.9 |
| 9 | 09.07.2022 | 19.7 | 68.0 | 1020.4 |
| 10 | 10.07.2022 | 16.3 | 73.0 | 1019.5 |
| 11 | 11.07.2022 | 18.6 | 75.2 | 1017.7 |
| 12 | 12.07.2022 | 21.3 | 62.9 | 1018.2 |
| 13 | 13.07.2022 | 25.2 | 52.2 | 1014.4 |
| 14 | 14.07.2022 | 21.5 | 58.5 | 1013.5 |
| 15 | 15.07.2022 | 18.7 | 55.8 | 1016.1 |
| 16 | 16.07.2022 | 18.9 | 55.3 | 1017.2 |
| 17 | 17.07.2022 | 20.1 | 49.5 | 1020.0 |
| 18 | 18.07.2022 | 25.2 | 43.5 | 1016.1 |
| 19 | 19.07.2022 | 28.5 | 40.4 | 1010.9 |
| 20 | 20.07.2022 | 26.1 | 50.7 | 1010.4 |
| 21 | 21.07.2022 | 19.0 | 89.2 | 1013.5 |
| 22 | 22.07.2022 | 19.3 | 77.0 | 1013.7 |
| 23 | 23.07.2022 | 21.5 | 64.4 | 1012.7 |
| 24 | 24.07.2022 | 24.8 | 56.1 | 1011.4 |
| 25 | 25.07.2022 | 24.7 | 53.6 | 1004.8 |
| 26 | 26.07.2022 | 20.1 | 66.2 | 1010.1 |
| 27 | 27.07.2022 | 18.1 | 56.2 | 1013.2 |
| 28 | 28.07.2022 | 19.2 | 55.5 | 1010.8 |
| 29 | 29.07.2022 | 21.3 | 56.4 | 1009.7 |
| 30 | 30.07.2022 | 21.5 | 58.4 | 1012.4 |
| 31 | 31.07.2022 | 23.4 | 57.6 | 1010.8 |

Report on the performance test of the N300 ambient air quality measuring system manufactured by Teledyne API for the component carbon monoxide, Report no.: 936/21255654/B

Table 41: Weather data (daily averages), August 2022

| August 2022 | Date | Avg. Air temperature [°C] | Rel. Humidity [%] | Air pressure [hPa] |
|-------------|------------|---------------------------|-------------------|--------------------|
| 1 | 01.08.2022 | 22.7 | 66.0 | 1011.3 |
| 2 | 02.08.2022 | 23.6 | 58.1 | 1011.5 |
| 3 | 03.08.2022 | 26.7 | 52.3 | 1009.0 |
| 4 | 04.08.2022 | 26.2 | 59.7 | 1006.8 |
| 5 | 05.08.2022 | 20.0 | 75.7 | 1011.4 |
| 6 | 06.08.2022 | 17.7 | 56.3 | 1020.3 |
| 7 | 07.08.2022 | 18.9 | 51.2 | 1018.0 |
| 8 | 08.08.2022 | 21.3 | 51.3 | 1017.9 |
| 9 | 09.08.2022 | 22.8 | 52.1 | 1019.3 |
| 10 | 10.08.2022 | 24.3 | 46.5 | 1017.9 |
| 11 | 11.08.2022 | 24.8 | 42.5 | 1014.8 |
| 12 | 12.08.2022 | 24.7 | 40.4 | 1012.0 |
| 13 | 13.08.2022 | 25.2 | 39.0 | 1009.6 |
| 14 | 14.08.2022 | 25.5 | 48.5 | 1002.5 |
| 15 | 15.08.2022 | 22.9 | 60.1 | 999.3 |
| 16 | 16.08.2022 | 24.2 | 57.9 | 1002.4 |
| 17 | 17.08.2022 | 22.9 | 62.8 | 1004.6 |
| 18 | 18.08.2022 | 20.9 | 73.5 | 1007.3 |
| 19 | 19.08.2022 | 22.4 | 66.2 | 1008.1 |
| 20 | 20.08.2022 | 21.1 | 69.3 | 1010.9 |
| 21 | 21.08.2022 | 20.5 | 59.2 | 1010.7 |
| 22 | 22.08.2022 | 21.0 | 56.3 | 1010.0 |

Appendix 3:

Evaluation of the sensitivity coefficient of the sample gas pressure according to 7.1 8.4.7 with the alternative pump model (non-regulated pump). See also chapter 3.4.

Table 42: Sensitivity coefficient of the sample gas pressure with the alternative pump

| | requirement | device 1 | | device 2 | |
|---|-------------|----------|---|----------|---|
| sensitivity coeff. sample gas pressure b_{gp} [$\mu\text{mol/mol/kPa}$] | $\leq 0,7$ | 0.08 | ✓ | 0.09 | ✓ |

Table 43: Individual results of the sensitivity to changes in sample gas pressure with the alternative pump

| time | pressure [kPa] | concentration | device 1 | device 2 |
|------------------|----------------|---------------|-------------------------|-------------------------|
| | | | [$\mu\text{mol/mol}$] | [$\mu\text{mol/mol}$] |
| 14:24:00 | 80 | 65.00 | 63.42 | 63.56 |
| 14:25:00 | 80 | 65.00 | 63.44 | 63.55 |
| 14:26:00 | 80 | 65.00 | 63.44 | 63.56 |
| average C_{P1} | | | 63.43 | 63.56 |
| 14:38:00 | 110 | 65.00 | 65.89 | 66.13 |
| 14:39:00 | 110 | 65.00 | 65.89 | 66.15 |
| 14:40:00 | 110 | 65.00 | 65.92 | 66.15 |
| average C_{P2} | | | 65.90 | 66.14 |

Appendix 4:

Data from the test gas application using the 47 mm round filter after the last drift test at the end of the field test. See also chapter 3.4.

Table 44: Data from the test gas application with alternative particle filter

| Zero Concentration | | | |
|--------------------|------------|-------------------------|-------------------------|
| Date | Time | Device 1 | Device 2 |
| | | [$\mu\text{mol/mol}$] | [$\mu\text{mol/mol}$] |
| 22.08.2022 | 08:13:00 | 0.00 | 0.00 |
| | 08:14:00 | 0.00 | 0.00 |
| | 08:15:00 | 0.00 | 0.00 |
| | 08:16:00 | 0.00 | 0.00 |
| | 08:17:00 | 0.00 | 0.00 |
| | aver. Cz,1 | 0.00 | 0.00 |
| | | | |
| 22.08.2022 | 08:38:00 | 0.00 | 0.05 |
| | 08:39:00 | 0.00 | 0.00 |
| | 08:40:00 | 0.00 | 0.05 |
| | 08:41:00 | 0.00 | 0.00 |
| | 08:42:00 | 0.00 | 0.00 |
| | aver. Cz,1 | 0.00 | 0.02 |

| C _r -Concentration | | | |
|-------------------------------|------------|-------------------------|-------------------------|
| Date | Time | Device 1 | Device 2 |
| | | [$\mu\text{mol/mol}$] | [$\mu\text{mol/mol}$] |
| 22.08.2022 | 08:31:00 | 63.91 | 65.74 |
| | 08:32:00 | 64.02 | 65.79 |
| | 08:33:00 | 64.02 | 65.84 |
| | 08:34:00 | 64.12 | 65.84 |
| | 08:35:00 | 64.23 | 65.90 |
| | aver. Cs,1 | 64.06 | 65.82 |
| | | | |
| 22.08.2022 | 08:51:00 | 64.12 | 65.56 |
| | 08:52:00 | 64.23 | 65.56 |
| | 08:53:00 | 64.23 | 65.56 |
| | 08:54:00 | 64.30 | 65.56 |
| | 08:55:00 | 64.33 | 65.72 |
| | aver. Cs,1 | 64.24 | 65.59 |

Appendix 5:

Manual